

Image-guided Pro-angiogenic Therapy in Diabetic Stroke Mouse Models Using a Multi-modal Nanoprobe: Erratum

Ying-Ying Bai¹, Xihui Gao², Yuan-Cheng Wang¹, Xin-Gui Peng¹, Di Chang¹, Shuyan Zheng², Cong Li²✉, and Shenghong Ju¹✉

1. Jiangsu Key Laboratory of Molecular and Functional Imaging, Department of Radiology, Zhongda Hospital, Medical School, Southeast University, Nanjing, 210009, China;
2. Key Laboratory of Smart Drug Delivery, Ministry of Education & PLA, School of Pharmacy, Fudan University, Shanghai, 201203, China.

✉ Corresponding author: Shenghong Ju, jsh0836@hotmail.com; Cong Li, congli@fudan.edu.cn.

© The author(s). This is an open access article distributed under the terms of the Creative Commons Attribution License (<https://creativecommons.org/licenses/by/4.0/>). See <https://ivyspring.com/terms> for full terms and conditions.

Published: 2025.04.19

Corrected article: *Theranostics* 2014; 4(8): 787-797. doi: 10.7150/thno.9525.

The authors apologize that some incorrect representative images were accidentally used in our previously published paper when the first author assembled the figures, including the MR images in Figure 3A, the *in vivo* NIRF images in Figure 3C, and the immunohistochemical image in Figure 6A. The corrected figures are shown below. The authors declare that these corrections do not change the results or conclusions of their paper. The authors sincerely apologize to the Journal and its readers for the confusion this may have caused.

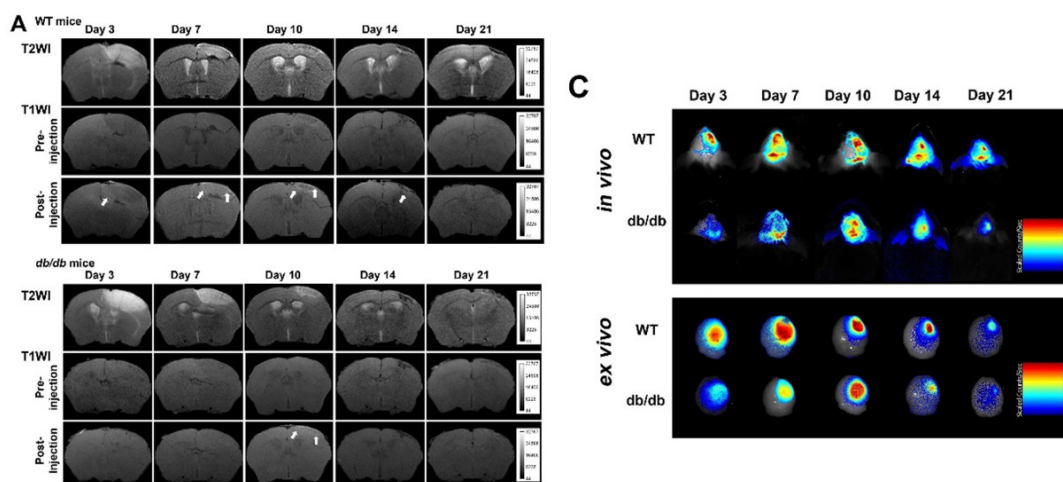


Figure 3. Corrected figure for original Figure 3A and C.

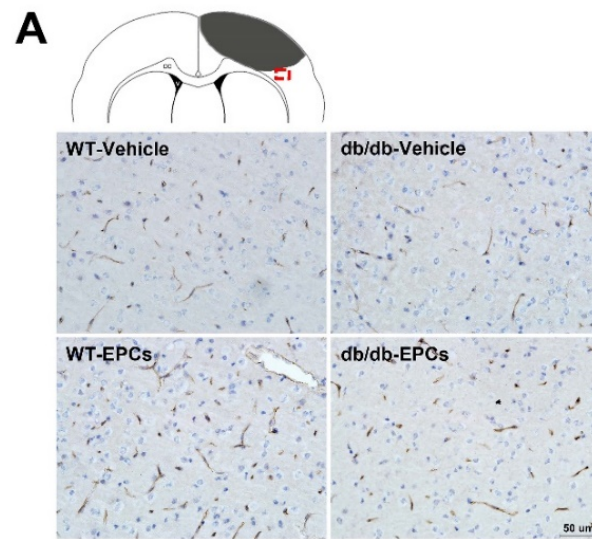


Figure 6. Corrected figure for original Figure 6A.