

**Figure S1. Flowchart of this study.**

**Figure S2. Single-cell clustering, differential expression, and APOE survival analysis.**

(A) UMAP visualization of 13 samples after batch effect correction. (B) UMAP showing 13 distinct cell clusters. (C) Differentially expressed genes (DEGs) across the 13 clusters. (D) Tissue preference of the ten cell types across samples. (E) Distribution of the ten cell types across individual samples. (F) Similarity between the ten cell types, calculated using Pearson's correlation coefficient. (G) Heatmap showing differential expression of the top ten DEGs in the ICB-resistant group from the CheckMate cohort. The bar density plot illustrates differential expression of APOE among ICB, clinical benefit (CB), and no clinical benefit (NCB) groups in the CheckMate cohort. (H) Kaplan-Meier plots demonstrating distinct overall survival (OS) and progression-free survival (PFS) outcomes for patients stratified by APOE expression, with the median value of APOE as the cutoff. (I) Comparison of ICB response rates between high and low APOE expression groups. CR: complete response; PR: partial response; PD: progressive disease; SD: stable disease.

**Figure S3. GSVA enrichment and macrophage deconvolution in EMTAB3267 and TCGA-KIRC cohorts.**

(A) Bar plot showing the Gene Set Enrichment Analysis (GSEA) results based on the Gene Ontology (GO) database (top) and the KEGG database (bottom). (B) Following the TIDE procedure, patients were classified into potential clinical benefit (CB) and no clinical benefit (NCB) groups, and their cellular components were inferred using the BayesPrim deconvolution algorithm. Heatmap displaying the differential distribution of six macrophage subsets between CB and NCB groups in the EMTAB3267 cohort. (C) Comparison of APOE<sup>+</sup> macrophage scores between CB and ICB groups in the EMTAB3267 cohort. (D) Based on the median APOE score, all patients were categorized into high-APOE<sup>+</sup> and low-APOE<sup>+</sup> macrophage groups. A Kappa ( $\kappa$ ) consistency test was conducted to assess the agreement between APOE<sup>+</sup> macrophage groups and TIDE classifications. A Kappa value > 0.4 indicated favorable consistency. (E) Heatmap showing the differential distribution of six macrophage subsets between CB and NCB groups in the TCGA-KIRC cohort. (F) Comparison of APOE<sup>+</sup> macrophage scores between CB and ICB groups in the TCGA-KIRC cohort. (G) Kappa consistency test results for the TCGA-KIRC cohort.

**Figure S4. SCENIC analysis of macrophage regulons.**

(A) Top five regulons for each macrophage subset. (B) Differential regulon activity patterns across six macrophage subsets among the ICB groups. (C) Regulons of KLF2, KLF4, and KLF6, along with their associated target genes. (D) Regulons of the AP-1 complex (JUB, JUNB, FOS) and their target genes. (E) Regulons of AR, THAP1, SPI1, MLX, and DRAP1, along with their target genes. (F) Gene Ontology (GO) and KEGG enrichment analysis for target genes of the CEBPA, CEBPB, and CEBPD regulons. (G) Comparison of chemokine transcriptional activity (CXCL1, CXCL2, CCL4, CCL5, CCL7, CCL13, and CCL18) between the ICB groups. (H) Comparison of CCL4 and CCL5 expression levels between the ICB groups. \* Represent  $P < 0.05$ ; \*\* represent  $P < 0.05$ ; \*\*\* represent  $P < 0.05$ . (I) Differential expression of CEBPD between ICB-sensitive and ICB-resistant patients based on the GSE67501 dataset (right) and the Miao et al. cohort (left). RE: responder; NR: non-responder; CB: clinical benefit; NCB: no clinical benefit.

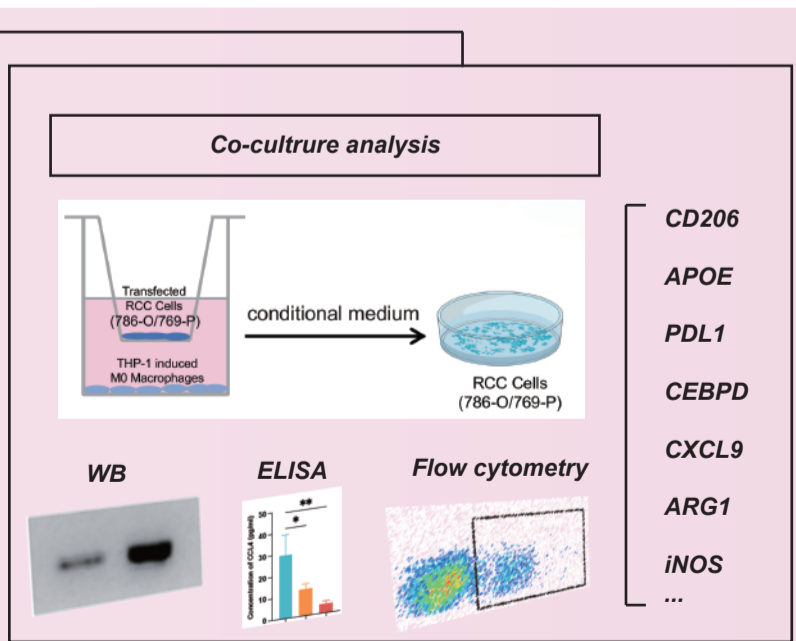
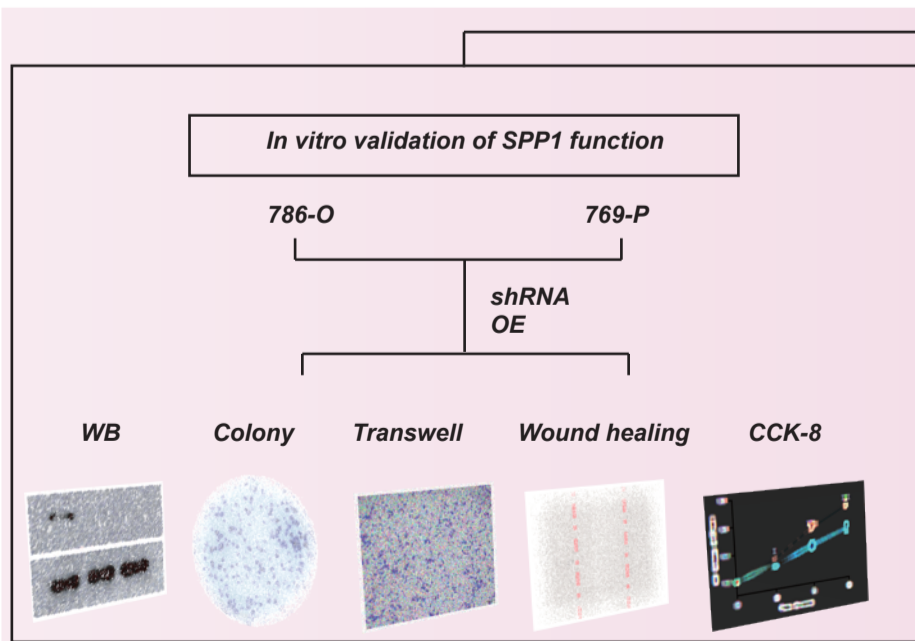
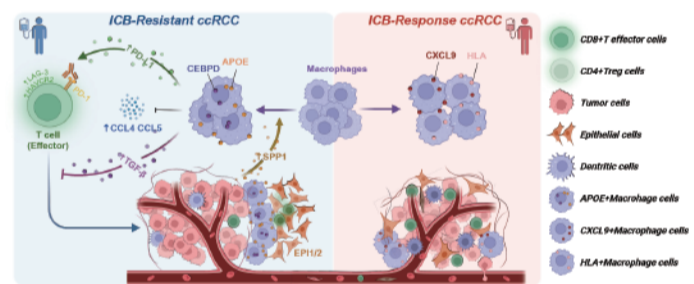
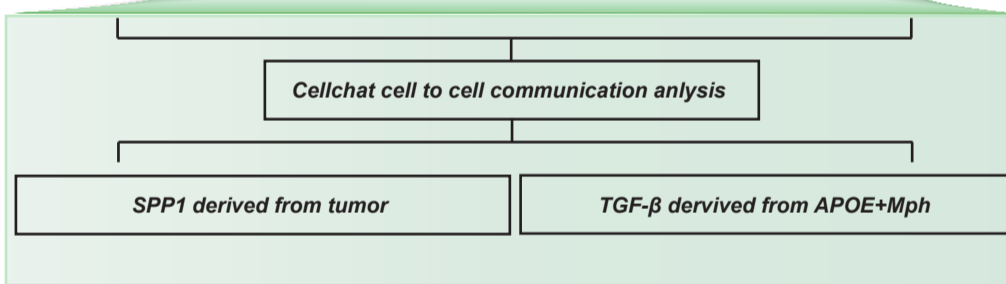
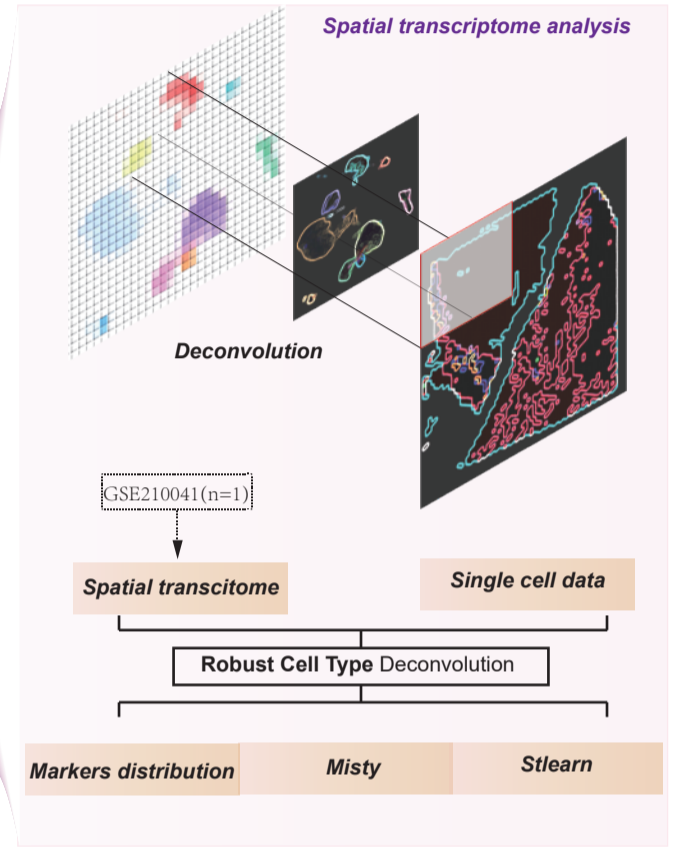
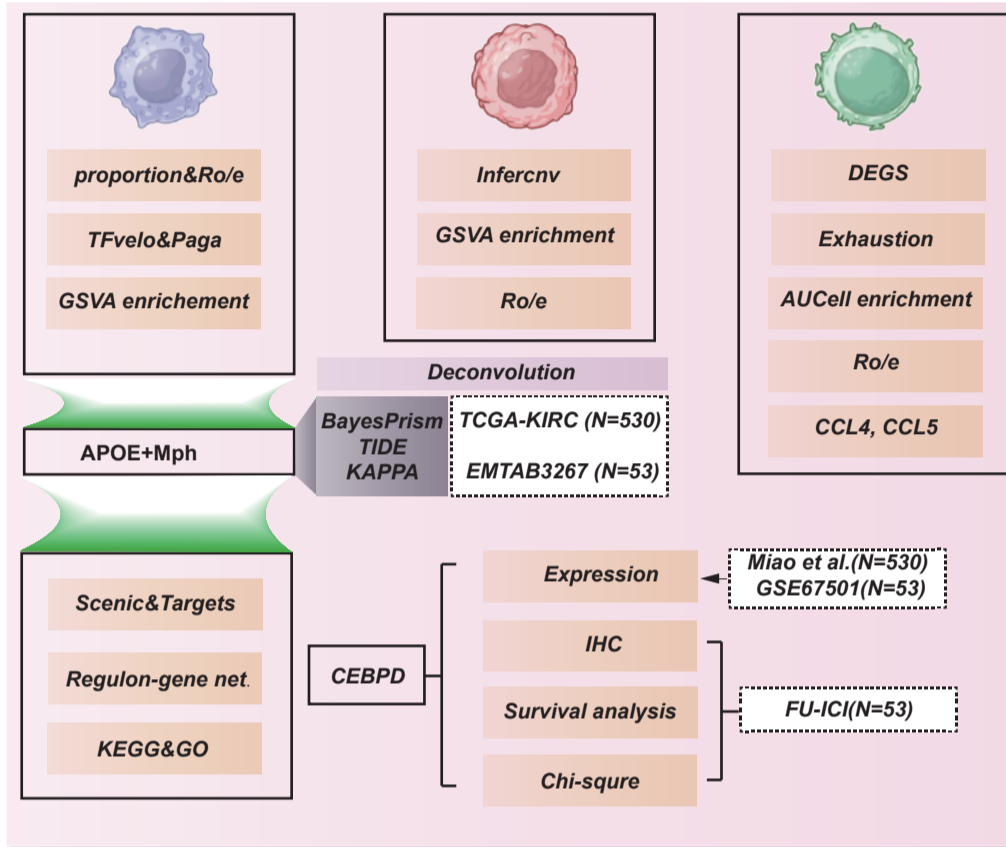
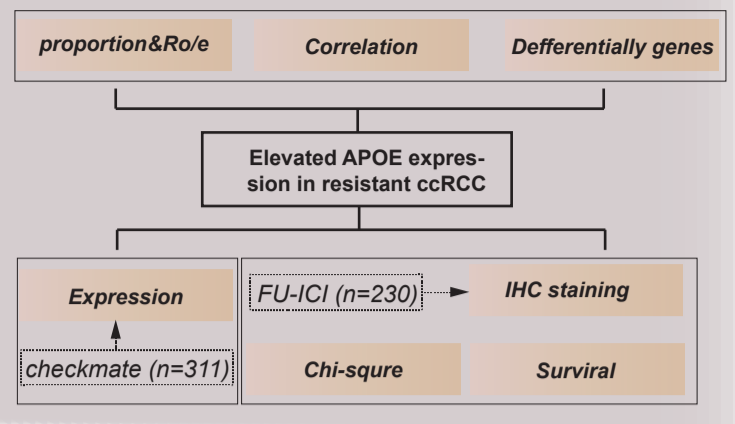
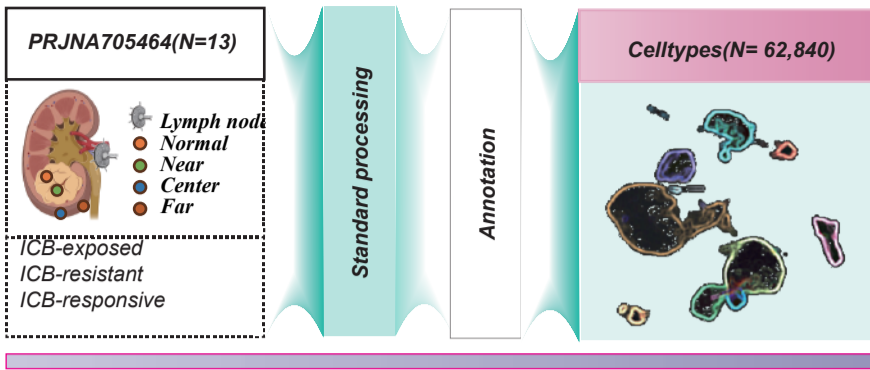
**Figure S5. Stlearn-based cell-cell communication analysis.**

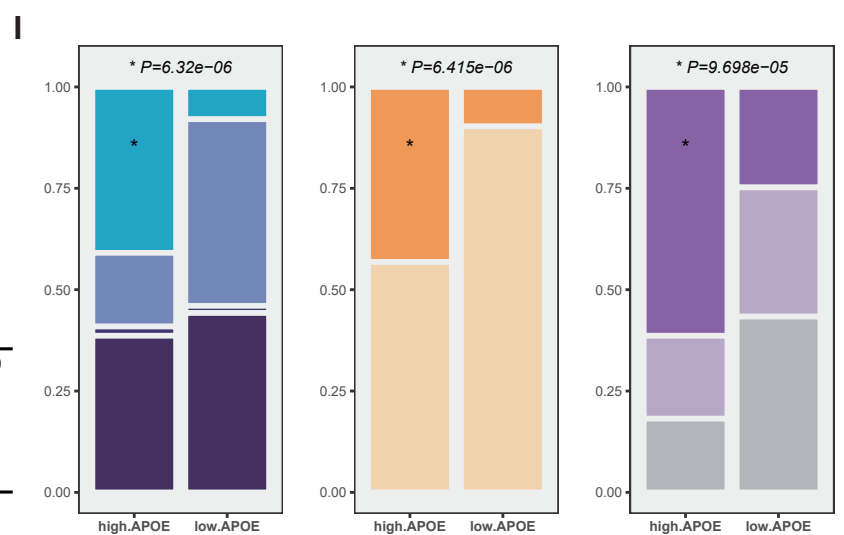
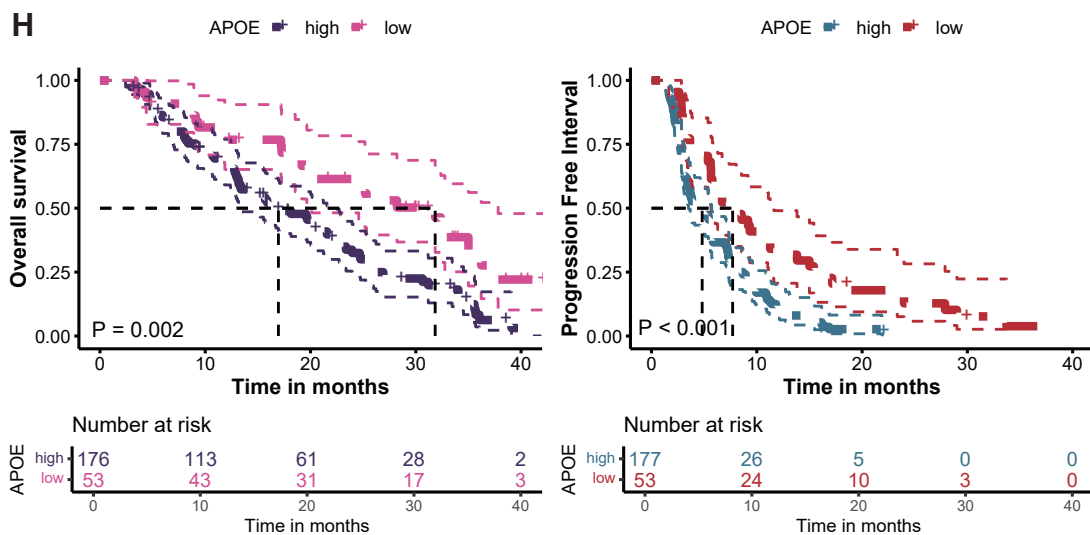
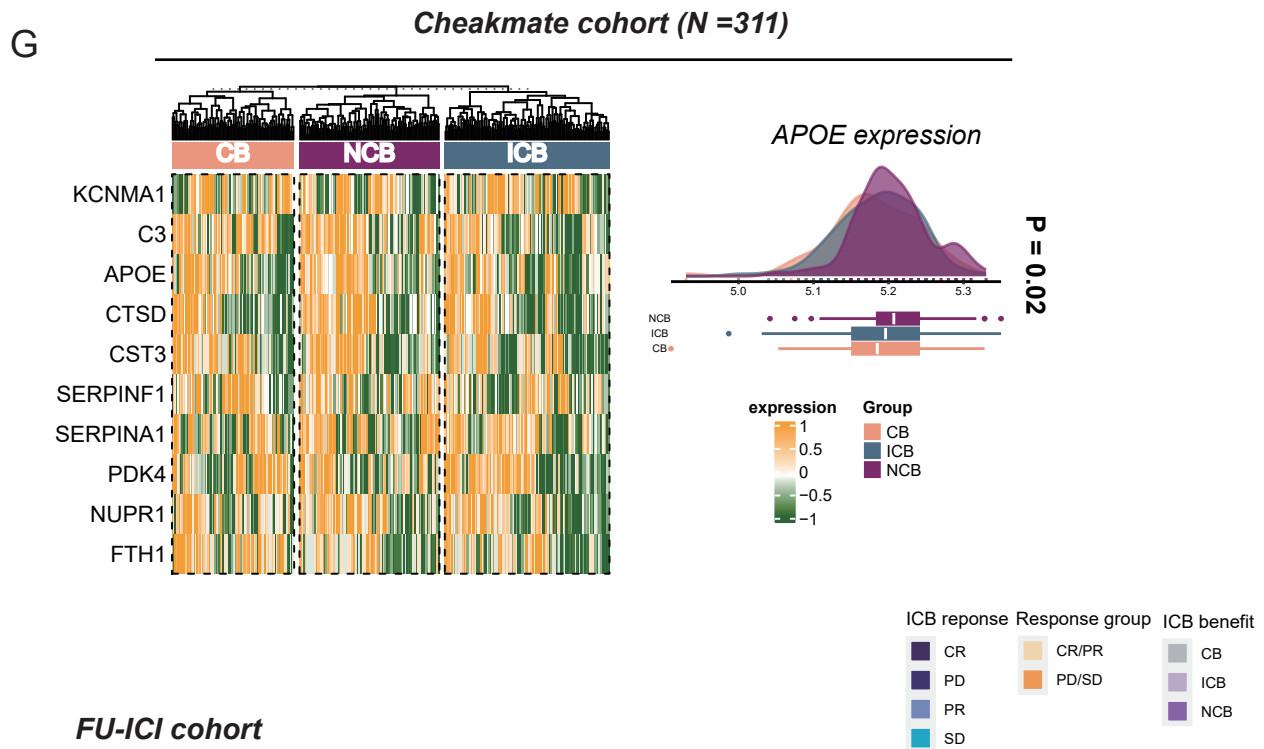
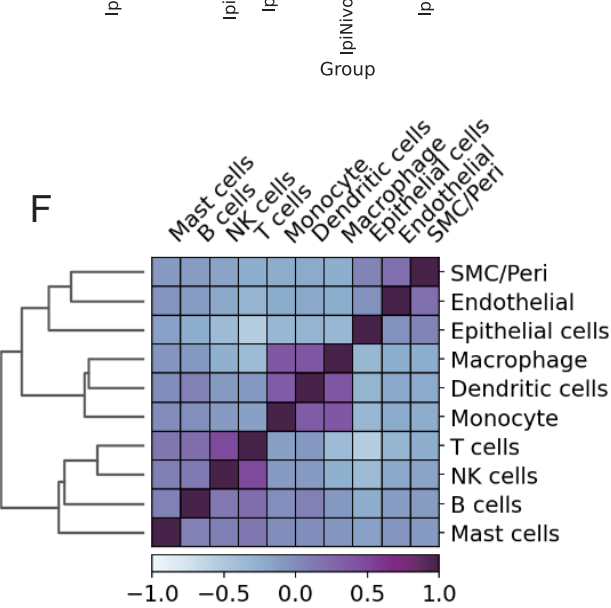
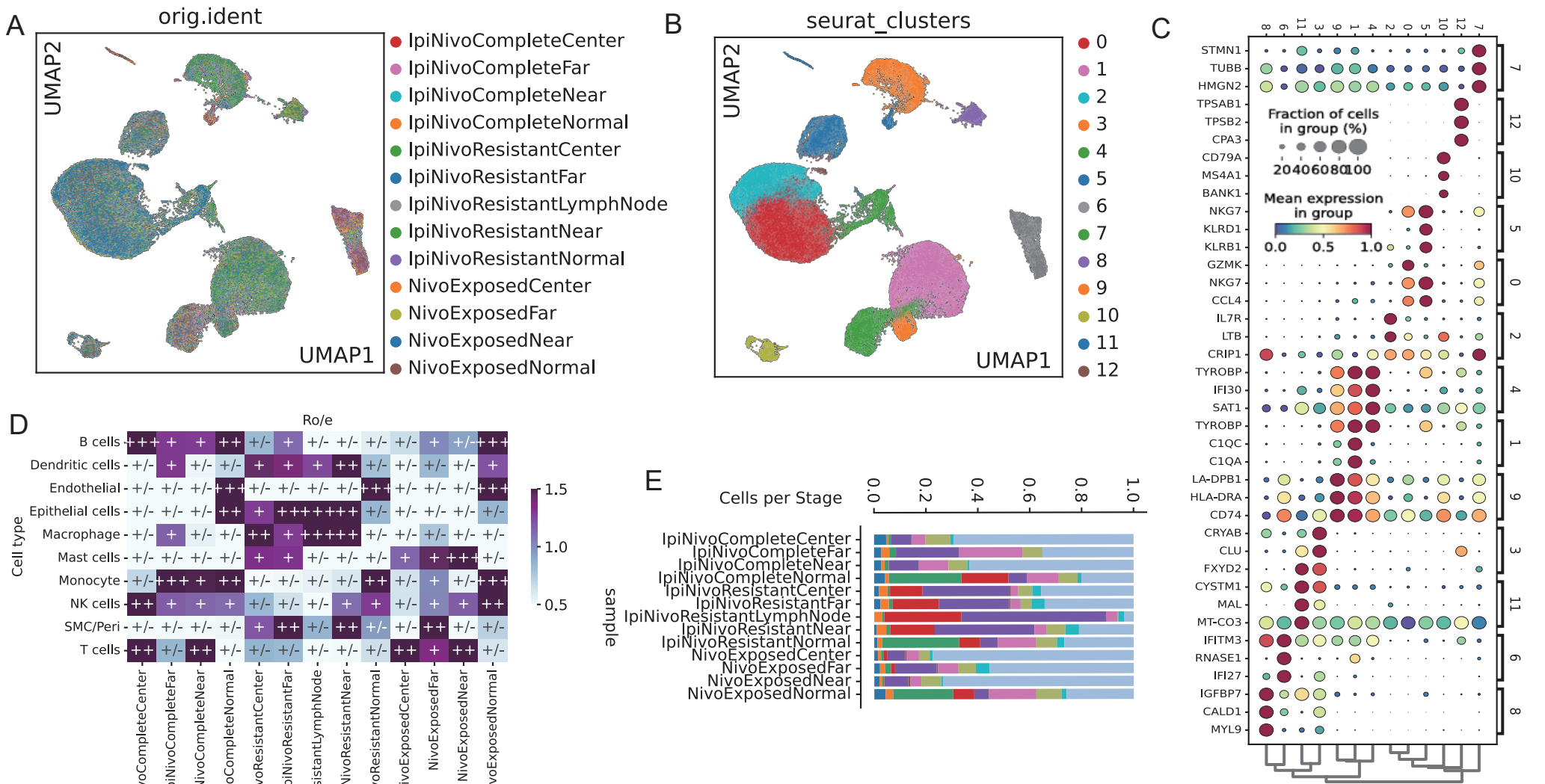
Top 50 ligand-receptor interactions among cell types based on Robust Cell Type Decomposition (RCTD) results.

**Figure S6. The co-culture of CM and APOE neutralization on the effects of macrophage polarization and tumor progression in 769-P cells.**

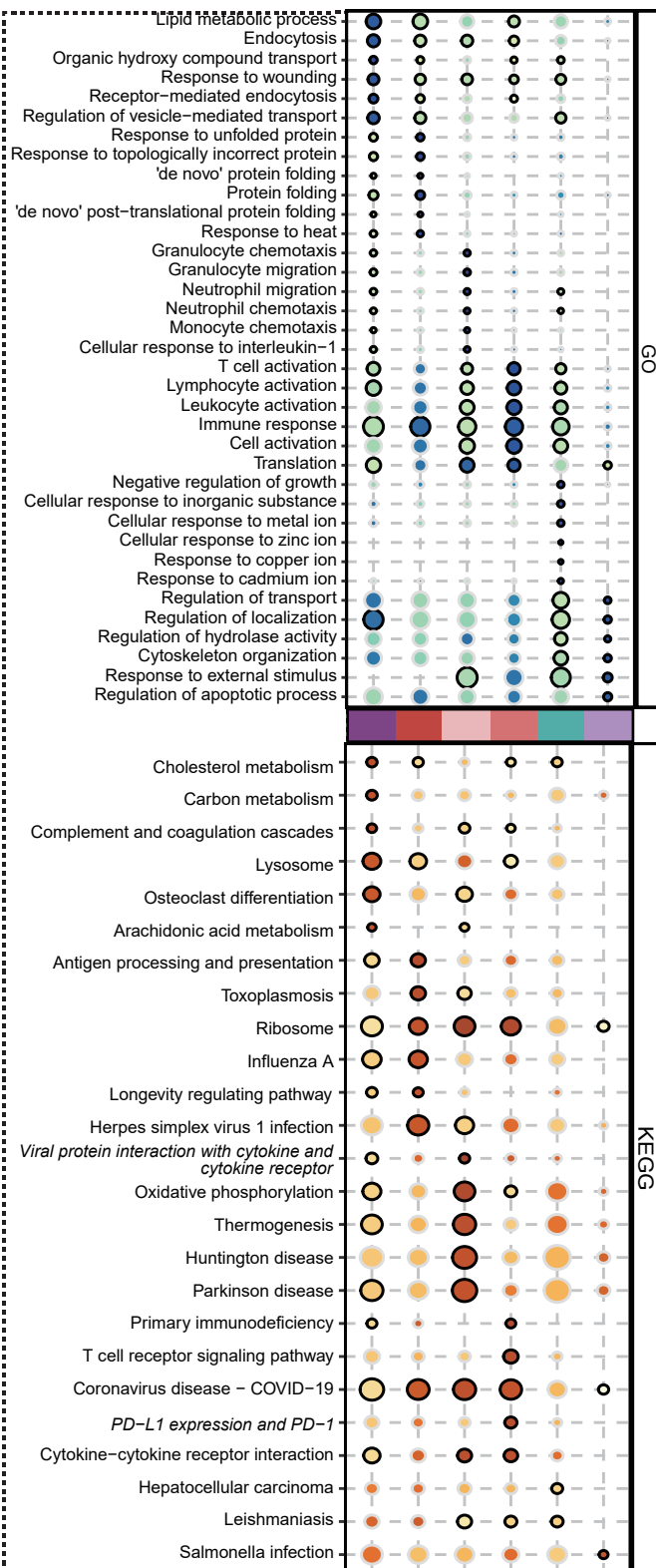
(A) A colony formation assay was performed to assess the impact of co-culture CM and APOE neutralization on the cloning ability of 769-P cells. The quantification and comparison of colony counts are depicted (\* represent  $P < 0.05$ ; \*\* represent  $P < 0.01$ ; \*\*\* represent  $P < 0.001$ ). (B) Transwell migration assays analysis showed the different migration ability of 769-P cells. The quantity of cells that migrated was measured. (C) Evaluation of the effects of co-culturing CM and APOE neutralization on cell migration by wound healing analysis. A quantitative assessment of the percentage of wound closure is presented. (D) Assess the impact of co-culturing CM and APOE neutralization on tumor cell proliferation by CCK-8 proliferation analysis.

**Table S1. Detailed descriptions of the R and Python packages utilized, the study cohorts, and the antibodies employed are provided.**



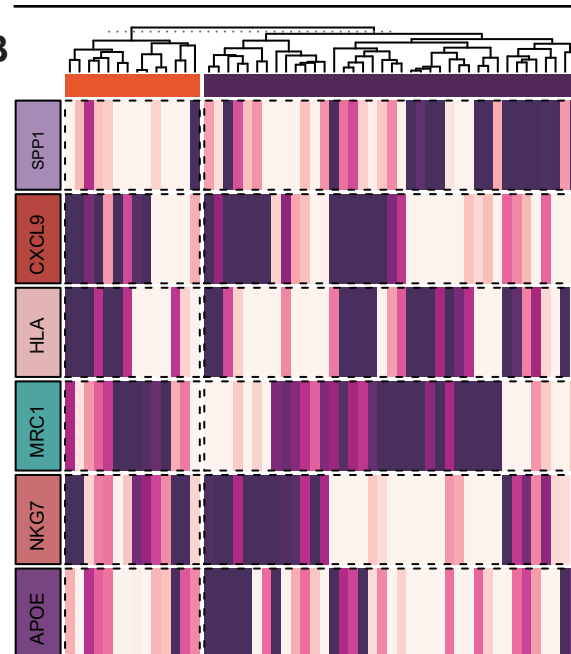


A

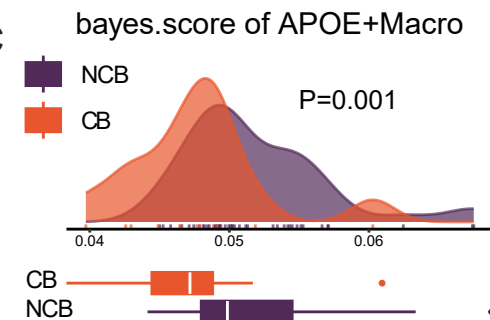


## EMTAB3267 cohort

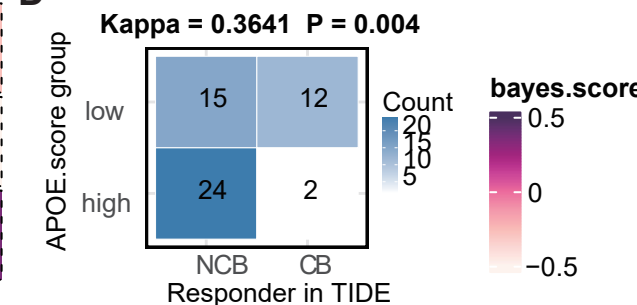
B



C

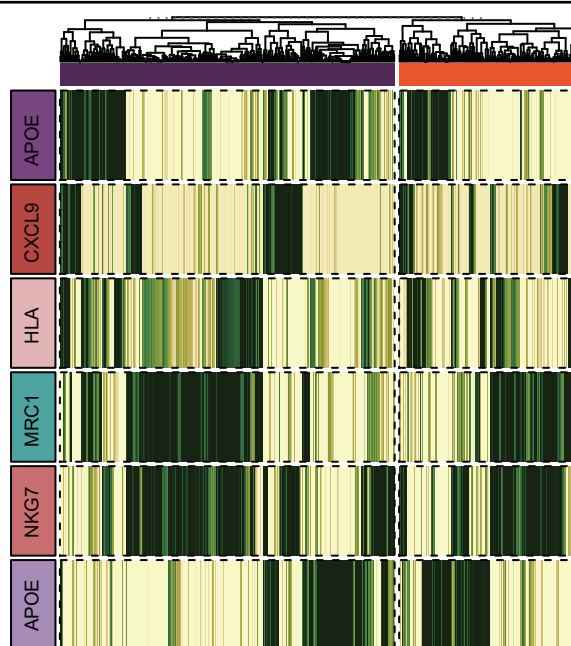


D

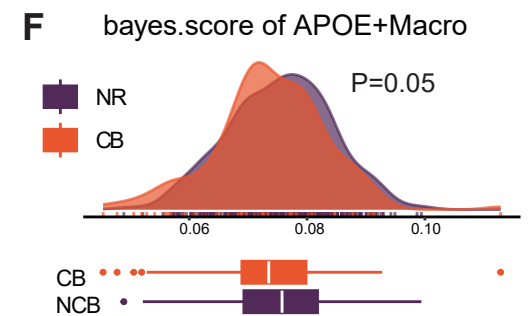


## TCGA-KIRC cohort

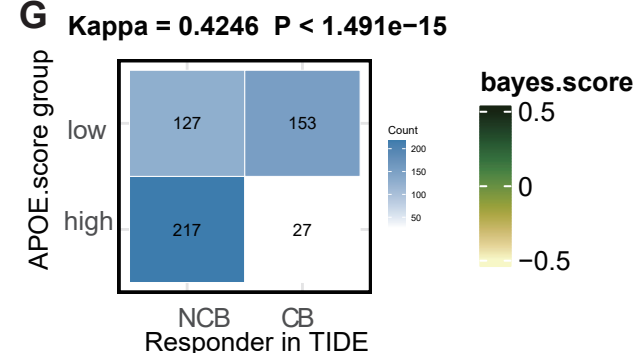
E

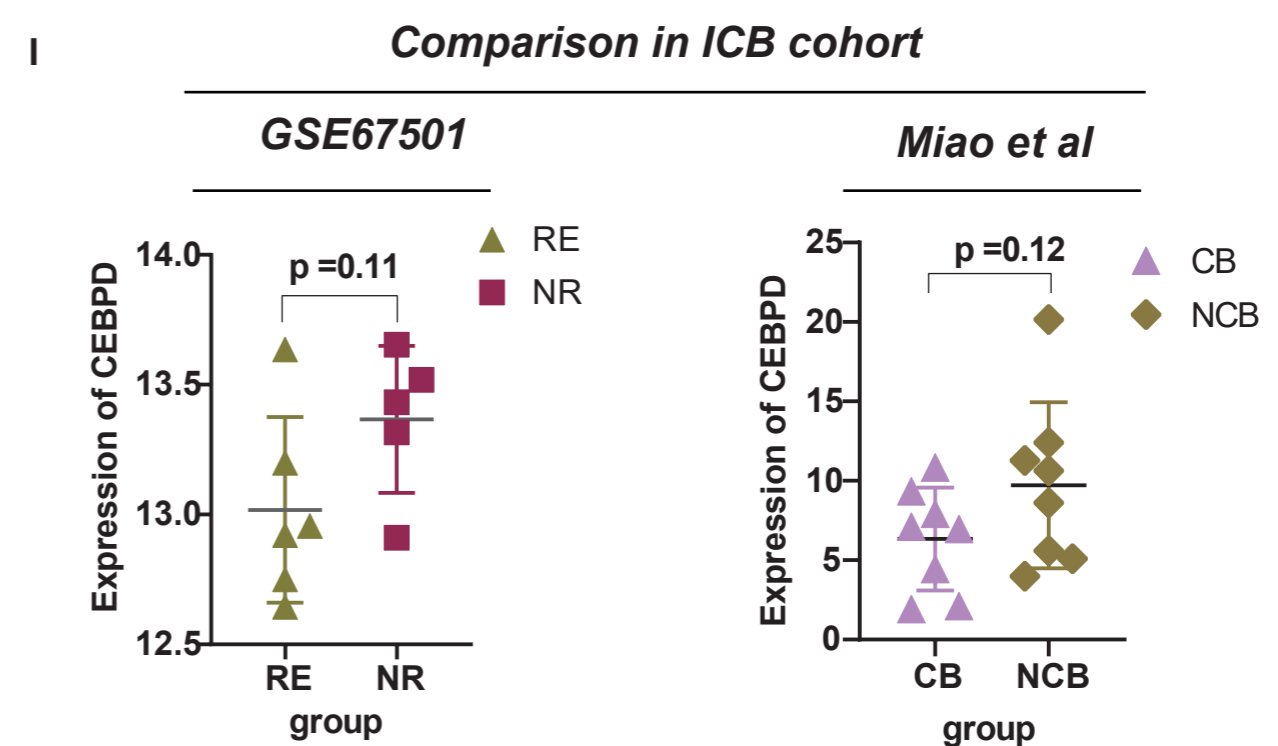
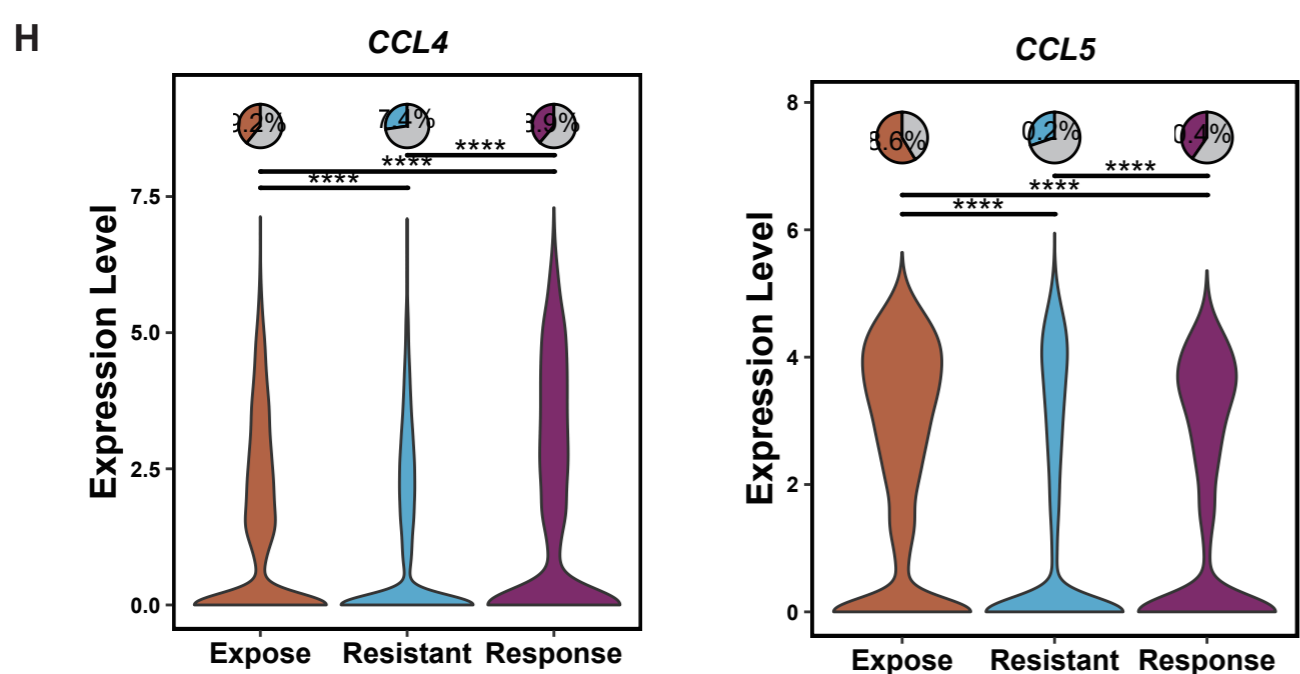
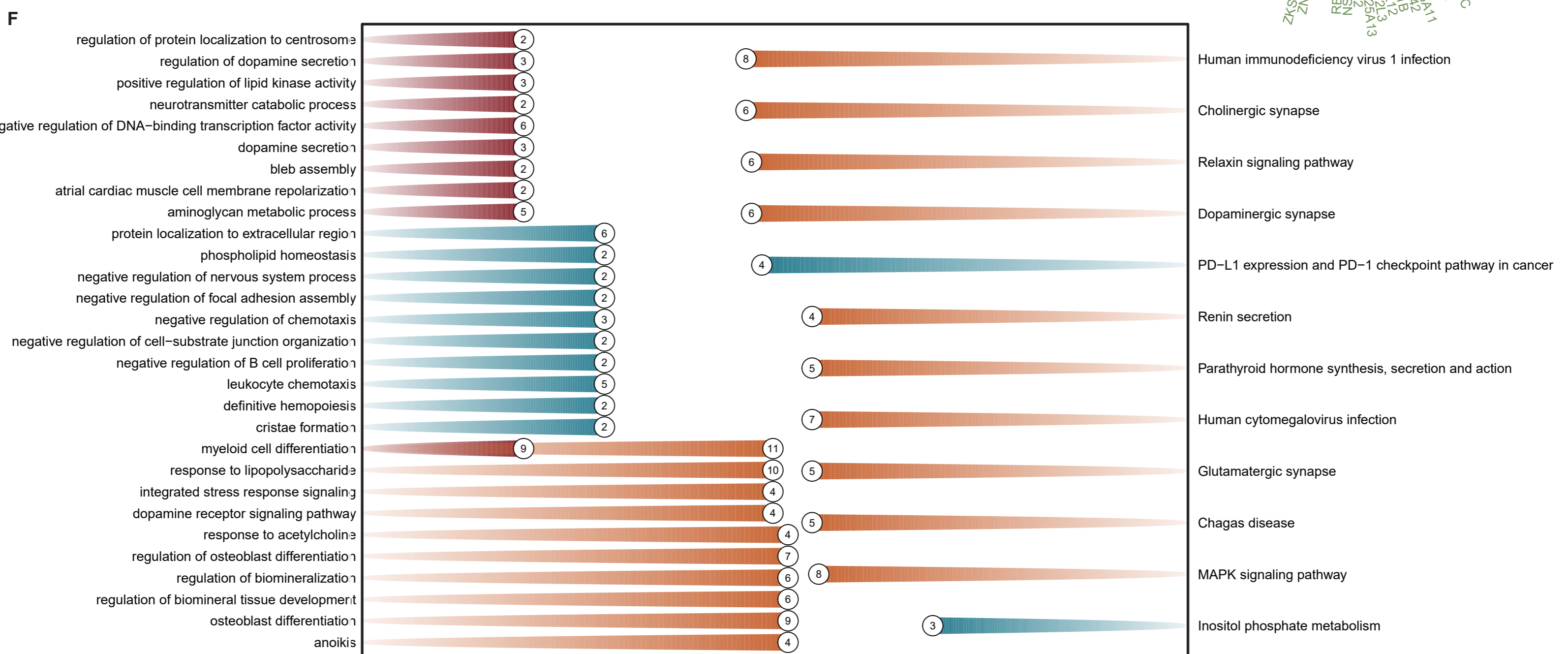
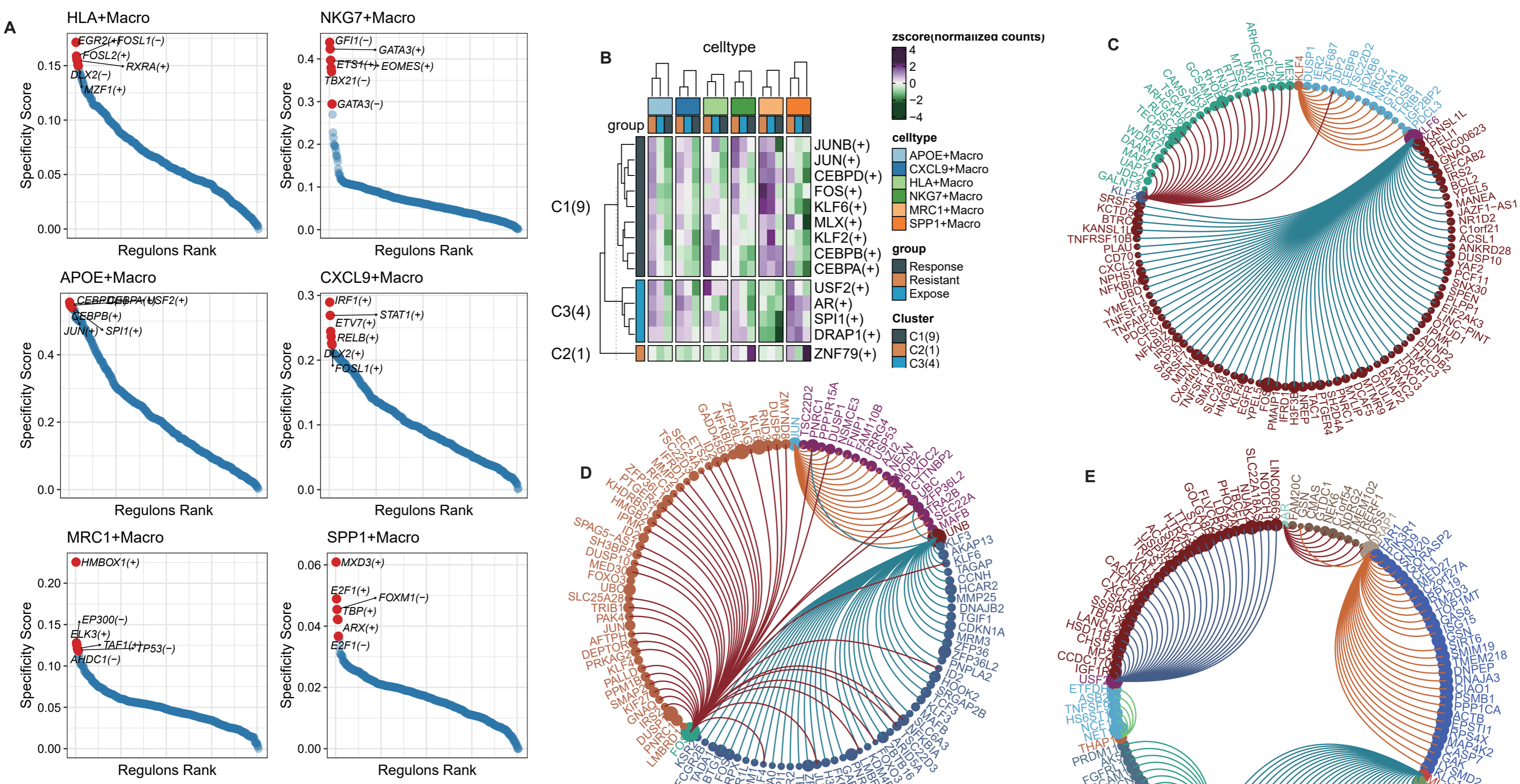


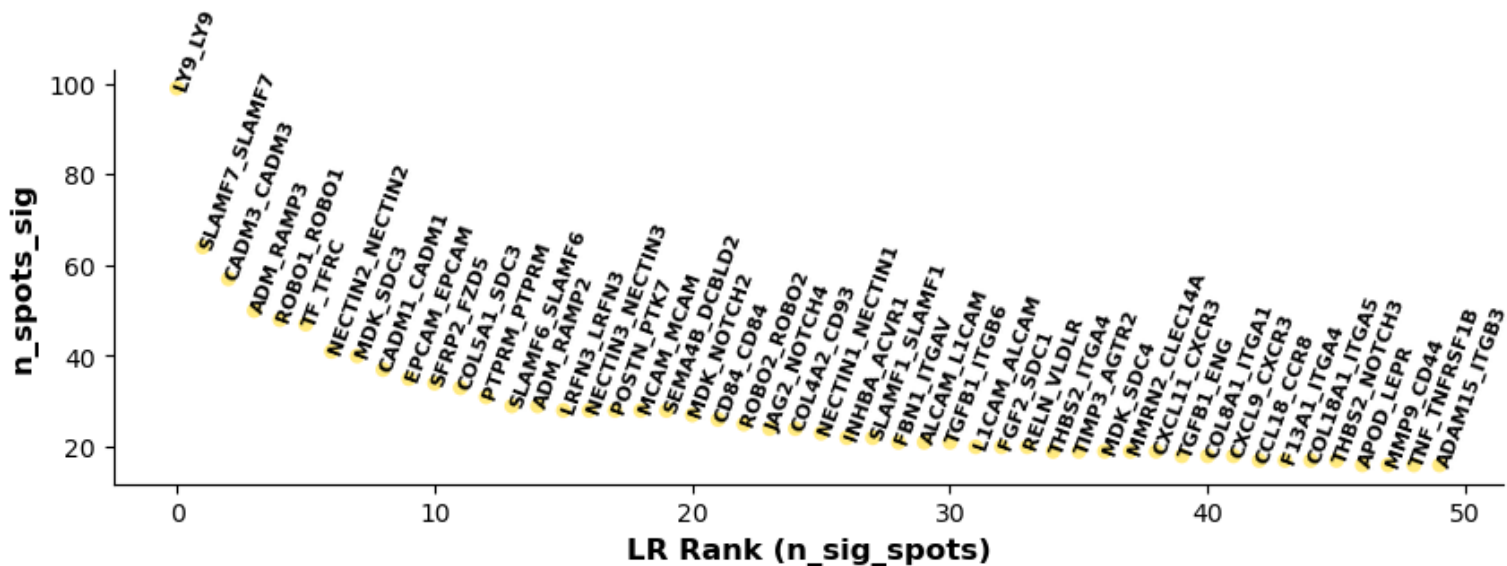
F



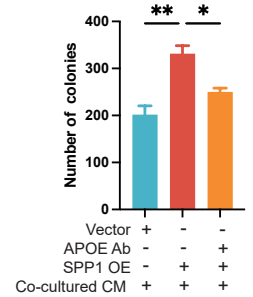
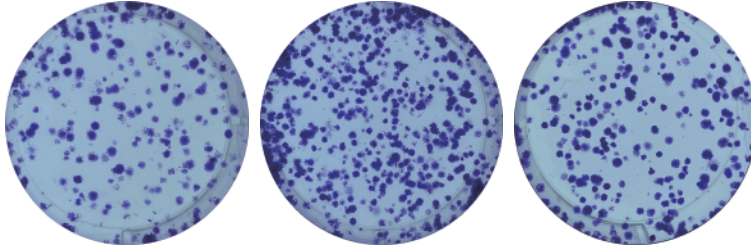
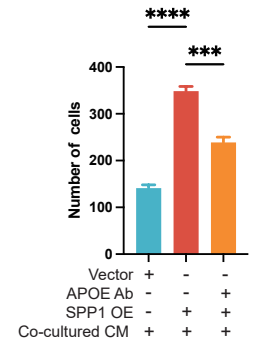
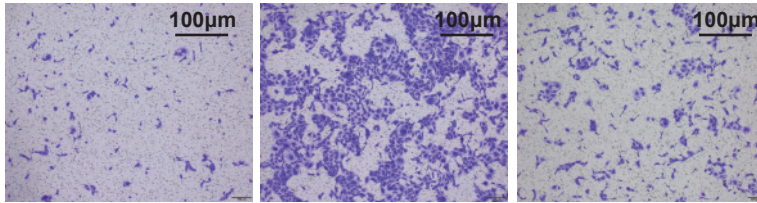
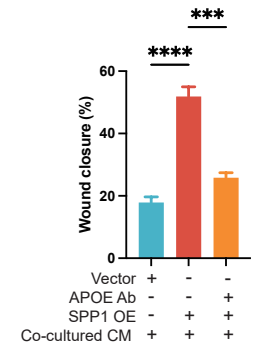
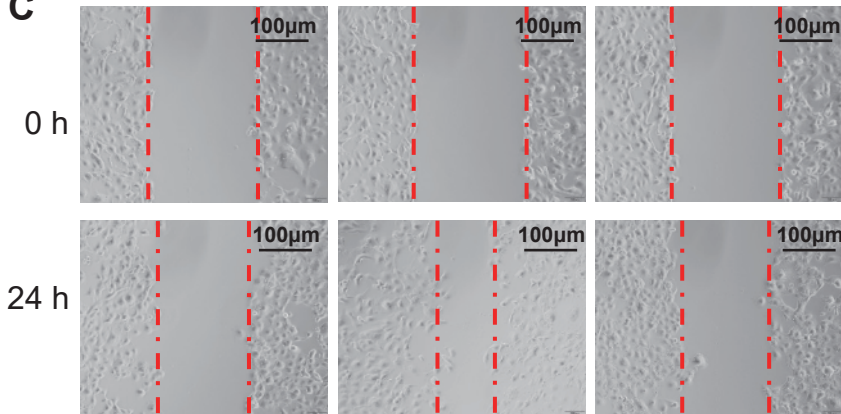
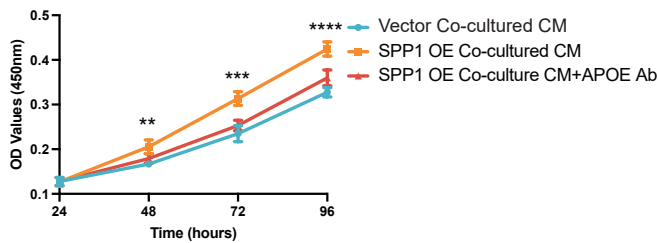
G







Vector	+	-	-
APOE Ab	-	-	+
SPP1 OE	-	+	+
Co-cultured CM	+	+	+

**A****B****C****D**



## Software and algorithms

Package	Version	
<b>R V4.2.2</b>	R Core Team	<a href="https://www.r-project.org/">https://www.r-project.org/</a>
<b>PythonV3.9</b>	Python Software Foundation	<a href="https://www.python.org/">https://www.python.org/</a>
<b>Seurat V4.3.0</b>	Stuart et al.(1)	<a href="https://satijalab.org/seurat/">https://satijalab.org/seurat/</a>
<b>DoubletFinder</b>	McGinnis et al. (2)	<a href="https://github.com/chris-mcginnis-ucsf/DoubletFinder">https://github.com/chris-mcginnis-ucsf/DoubletFinder</a>
<b>Harmony V0.1.0</b>	Korsunsky et al.(3)	<a href="https://cran.r-project.org/web/packages/harmony/index.html">https://cran.r-project.org/web/packages/harmony/index.html</a>
<b>SCP</b>	Zhang et al.	<a href="https://github.com/zhanghao-njmu/SCP">https://github.com/zhanghao-njmu/SCP</a>
<b>omicverse</b>	Zeng et al.(4)	<a href="https://omicverse.readthedocs.io/">https://omicverse.readthedocs.io/</a>
<b>Harmony V0.1.0</b>	Korsunsky et al.(3)	<a href="https://cran.r-project.org/web/packages/harmony/index.html">https://cran.r-project.org/web/packages/harmony/index.html</a>
<b>clusterProfiler V4.0.5</b>	Yu et al.(5)	<a href="https://guangchuangyu.github.io/software/clusterProfiler/">https://guangchuangyu.github.io/software/clusterProfiler/</a>
<b>ggplot2 V3.3.5</b>	Wickham et al. (6)	<a href="https://ggplot2.tidyverse.org/">https://ggplot2.tidyverse.org/</a>
<b>AUCell V3.18</b>	Aibar et al.(7)	<a href="https://bioconductor.org/packages/release/bioc/html/AUCell.html">https://bioconductor.org/packages/release/bioc/html/AUCell.html</a>
<b>BayesPrism v2.2</b>	Chu et al.(8)	<a href="https://github.com/Danko-Lab/BayesPrism/blob/main/tutorial_deconvolution.html">https://github.com/Danko-Lab/BayesPrism/blob/main/tutorial_deconvolution.html</a>
<b>TFvelo</b>	Li et al.(9)	<a href="https://github.com/xiaoyeye/TFvelo/tree/main/TFvelo">https://github.com/xiaoyeye/TFvelo/tree/main/TFvelo</a>
<b>PAGA</b>	Wolf et al.(10)	<a href="https://github.com/theislab/paga">https://github.com/theislab/paga</a>
<b>inferCNV (v1.6.0)</b>	Trinity CTAT Project	<a href="https://github.com/broadinstitute/inferCNV">https://github.com/broadinstitute/inferCNV</a>
<b>SCENIC (version 1.2.4)</b>	Aibar et al.(7)	<a href="https://scenic.aertslab.org/">https://scenic.aertslab.org/</a>
<b>Cellchat (v.2.0)</b>	Jin et al.(11)	<a href="https://github.com/sqjin/CellChat/tree/master/tutorial">https://github.com/sqjin/CellChat/tree/master/tutorial</a>
<b>MISTy (v1.2.1)</b>	Tanevski et al.(12)	<a href="https://github.com/saezlab/misty">https://github.com/saezlab/misty</a>
<b>RCTD</b>	Cable et.al. (13)	<a href="https://github.com/dmcable/spacexr/blob/master/resources/RCTD_0.1.0.tar.gz">https://github.com/dmcable/spacexr/blob/master/resources/RCTD_0.1.0.tar.gz</a>
<b>Stlearn</b>	Duy et al.(14)	<a href="https://github.com/BiomedicalMachineLearning/stLearn">https://github.com/BiomedicalMachineLearning/stLearn</a>
<b>TIDE</b>	Jing et al.	<a href="http://tide.dfci.harvard.edu/">http://tide.dfci.harvard.edu/</a>
<b>SCRNAtools</b>	Zhang et al.	<a href="https://github.com/scRNA-tools/scRNA-tools">https://github.com/scRNA-tools/scRNA-tools</a>
<b>jjvocalno</b>	Zhang et al.	<a href="https://github.com/junjunlab/scRNAtoolVis-manual/blob/main/jjvolcano.html">https://github.com/junjunlab/scRNAtoolVis-manual/blob/main/jjvolcano.html</a>
<b>Plot1cell</b>	Wu et al. (15)	<a href="https://github.com/TheHumphreysLab/plot1cell">https://github.com/TheHumphreysLab/plot1cell</a>
<b>sva</b>	Leek et al. (16)	<a href="https://github.com/jtleek/sva-devel/blob/master/R/ComBat.R">https://github.com/jtleek/sva-devel/blob/master/R/ComBat.R</a>

**Reference**

1. Hao Y, Hao S, Andersen-Nissen E, Mauck WM, 3rd, Zheng S, Butler A, et al. Integrated analysis of multimodal single-cell data. *Cell*. 2021;184(13):3573-87.e29.
2. McGinnis CS, Murrow LM, Gartner ZJ. DoubletFinder: Doublet Detection in Single-Cell RNA Sequencing Data Using Artificial Nearest Neighbors. *Cell Syst*. 2019;8(4):329-37.e4.
3. Korsunsky I, Millard N, Fan J, Slowikowski K, Zhang F, Wei K, et al. Fast, sensitive and accurate integration of single-cell data with Harmony. *Nat Methods*. 2019;16(12):1289-96.
4. Zeng Z, Ma Y, Hu L, Tan B, Liu P, Wang Y, et al. OmicVerse: a framework for bridging and deepening insights across bulk and single-cell sequencing. *Nat Commun*. 2024;15(1):5983.
5. Yu G, Wang LG, Han Y, He QY. clusterProfiler: an R package for comparing biological themes among gene clusters. *Omics*. 2012;16(5):284-7.
6. Ginestet C. ggplot2: Elegant Graphics for Data Analysis. *Journal of the Royal Statistical Society Series A: Statistics in Society*. 2011;174(1):245-6.
7. Aibar S, González-Blas CB, Moerman T, Huynh-Thu VA, Imrichova H, Hulselmans G, et al. SCENIC: single-cell regulatory network inference and clustering. *Nat Methods*. 2017;14(11):1083-6.
8. Chu T, Wang Z, Pe'er D, Danko CG. Cell type and gene expression deconvolution with BayesPrism enables Bayesian integrative analysis across bulk and single-cell RNA sequencing in oncology. *Nat Cancer*. 2022;3(4):505-17.
9. Li J, Pan X, Yuan Y, Shen HB. TFvelo: gene regulation inspired RNA velocity estimation. *Nat Commun*. 2024;15(1):1387.
10. Wolf FA, Hamey FK, Plass M, Solana J, Dahlin JS, Göttgens B, et al. PAGA: graph abstraction reconciles clustering with trajectory inference through a topology preserving map of single cells. *Genome Biol*. 2019;20(1):59.
11. Jin S, Plikus MV, Nie Q. CellChat for systematic analysis of cell-cell communication from single-cell transcriptomics. *Nat Protoc*. 2025;20(1):180-219.
12. Tanevski J, Flores ROR, Gabor A, Schapiro D, Saez-Rodriguez J. Explainable multiview framework for dissecting spatial relationships from highly multiplexed data. *Genome Biol*. 2022;23(1):97.
13. Cable DM, Murray E, Zou LS, Goeva A, Macosko EZ, Chen F, et al. Robust decomposition of cell type mixtures in spatial transcriptomics. *Nat Biotechnol*. 2022;40(4):517-26.
14. Pham D, Tan X, Balderson B, Xu J, Grice LF, Yoon S, et al. Robust mapping of spatiotemporal trajectories and cell-cell interactions in healthy and diseased tissues. *Nat Commun*. 2023;14(1):7739.
15. Wu H, Gonzalez Villalobos R, Yao X, Reilly D, Chen T, Rankin M, et al. Mapping the single-cell transcriptomic response of murine diabetic kidney disease to therapies. *Cell Metab*. 2022;34(7):1064-78.e6.
16. Leek JT, Johnson WE, Parker HS, Jaffe AE, Storey JD. The sva package for removing batch effects and other unwanted variation in high-throughput experiments. *Bioinformatics*. 2012;28(6):882-3.
17. Zhang L, Yu X, Zheng L, Zhang Y, Li Y, Fang Q, et al. Lineage tracking reveals dynamic relationships of T cells in colorectal cancer. *Nature*. 2018;564(7735):268-72.

*Data source*

<b>TCGA-KIRC</b>	<b>530</b>	<b><a href="https://portal.gdc.cancer.gov/">https://portal.gdc.cancer.gov/</a></b>
<b>EMTAB3267</b>	53	<a href="https://www.ebi.ac.uk/arrayexpress/">https://www.ebi.ac.uk/arrayexpress/</a>
<b>GSE67501</b>	11	<a href="https://www.ncbi.nlm.nih.gov/geo/">https://www.ncbi.nlm.nih.gov/geo/</a>
<b>Checkmate</b>	311	<a href="https://clinicaltrials.gov/">https://clinicaltrials.gov/</a>
<b>Miao et al.</b>	16	<a href="https://pmc.ncbi.nlm.nih.gov/articles/PMC6035749/">https://pmc.ncbi.nlm.nih.gov/articles/PMC6035749/</a>
<b>FU-ICI</b>	230	<a href="https://pubmed.ncbi.nlm.nih.gov/38040418/">https://pubmed.ncbi.nlm.nih.gov/38040418/</a>
<b>GSE210041</b>	2	<a href="https://www.ncbi.nlm.nih.gov/geo/">https://www.ncbi.nlm.nih.gov/geo/</a>
<b>PRJNA705464</b>	13	<a href="https://www.ebi.ac.uk/ena/browser/home">https://www.ebi.ac.uk/ena/browser/home</a>

*Antibody*

<b>Antibody</b>	<b>SOURCE</b>	<b>IDENTIFIER</b>
<b>APOE</b>	Abcam	ab183597
<b>PD-L1</b>	Abcam	ab205921
<b>CEBPD</b>	Abcam	ab245214
<b>SPP1</b>	Abcam	ab218237
<b>ARG1</b>	Abcam	ab315110
<b>GAPDH</b>	Abcam	ab9485
<b>INOS</b>	Abcam	ab178945
<b>CXCL9</b>	Abcam	ab263442
<b>CD206</b>	Abcam	ab270647