

SUPPLEMENTAL MATERIAL to

Theranostics with somatostatin receptor antagonists in SCLC: Correlation of ⁶⁸Ga-SSO120 PET with immunohistochemistry and survival

Ilektra Antonia Mavroei^{1,2,3}, Anna Romanowicz^{2,4}, Tristan Haake⁵, Johannes Wienker^{6,7}, Martin Metzenmacher^{1,2,7}, Kaid Darwiche^{6,7}, Filiz Oezkan^{6,7}, Servet Bölükbas^{8,9}, Martin Stuschke^{2,8,10}, Lale Umutlu^{2,11}, Marcel Opitz^{2,11}, Michael Nader^{2,4}, Rainer Hamacher^{1,2}, Jens Siveke^{1,2,3}, Jane Winantea^{6,7}, Wolfgang P. Fendler^{2,4}, Marcel Wiesweg^{1,2,7}, Wilfried E. E. Eberhardt^{1,2,7}, Ken Herrmann^{2,4,8}, Dirk Theegarten⁵, Martin Schuler^{1,2,7,8}, Hubertus Hautzel^{2,4}, David Kersting^{2,4}

¹ Department of Medical Oncology, West German Cancer Center (WTZ), University Hospital Essen, University of Duisburg-Essen, Essen, Germany

² German Cancer Consortium (DKTK), Partner Site University Hospital Essen, Essen, Germany

³ Bridge Institute of Experimental Tumor Therapy (BIT) and Division of Solid Tumor Translational Oncology (DKTK), West German Cancer Center, University Hospital Essen, University of Duisburg-Essen, Essen, Germany.

⁴ Department of Nuclear Medicine, West German Cancer Center (WTZ), University Hospital Essen, University of Duisburg-Essen, Essen, Germany

⁵ Institute of Pathology, University Hospital Essen, University of Duisburg-Essen, Essen, Germany

⁶ Department of Pulmonary Medicine, Section of Interventional Pulmonology, West German Cancer Center (WTZ), University Medicine Essen - Ruhrlandklinik, University of Duisburg-Essen, Essen, Germany

⁷ Division of Thoracic Oncology, West German Lung Center, University Medicine Essen - Ruhrlandklinik, University of Duisburg-Essen, Essen, Germany.

⁸ National Center for Tumor Diseases (NCT) West, Essen, Germany

⁹ Department of Thoracic Surgery and Thoracic Endoscopy, West German Cancer Center (WTZ), University Medicine Essen - Ruhrlandklinik, University of Duisburg-Essen, Essen, Germany

¹⁰ Department of Radiotherapy, West German Cancer Center (WTZ), University Hospital Essen, University of Duisburg-Essen, Essen, Germany

¹¹ Institute of Diagnostic, Interventional Radiology and Neuroradiology, West German Cancer Center (WTZ), University Hospital Essen, University of Duisburg-Essen, Essen, Germany

Supplemental Table S1: Patient Characteristics

Age (y)	
median (range)	65 (50-81)

Sex (n)	
male (%)	24 (44.4)
female (%)	30 (55.6)

T (n)	
1 (%)	7 (13.0)
2 (%)	6 (11.1)
3 (%)	8 (14.8)
4 (%)	33 (61.1)

N (n)	
0 (%)	4 (7.4)
1 (%)	2 (3.7)
2 (%)	20 (37.0)
3 (%)	28 (51.9)

M (n)	
0 (%)	21 (38.9)
1 (%)	33 (61.1)
1a (%)	5 (9.2)
1b (%)	7 (13.0)
1c (%)	21 (38.9)

Clinical characteristics of included patients

**Supplemental Table S2: Univariate Cox Regression Analysis for OS and TTF
(continuous variables)**

	HR TTF (95%-CI)	P (TTF)	HR OS (95% CI)	P (OS)
SSTR2 expression in IHC	0.71 (0.51-0.98)	0.037*	0.61 (0.40-0.93)	0.021*
Hottest lesion SUV _{max}	0.98 (0.96-1.00)	0.047*	0.98 (0.96-1.01)	0.132
Hottest lesion TLR _{peak}	0.94 (0.87-1.02)	0.117	0.91 (0.83-1.00)	0.034*
Whole-body tumor SUV _{mean}	0.97 (0.90-1.05)	0.451	0.96 (0.87-1.05)	0.316
Whole-body tumor TLR _{mean}	0.92 (0.78-1.08)	0.275	0.86 (0.71-1.02)	0.088

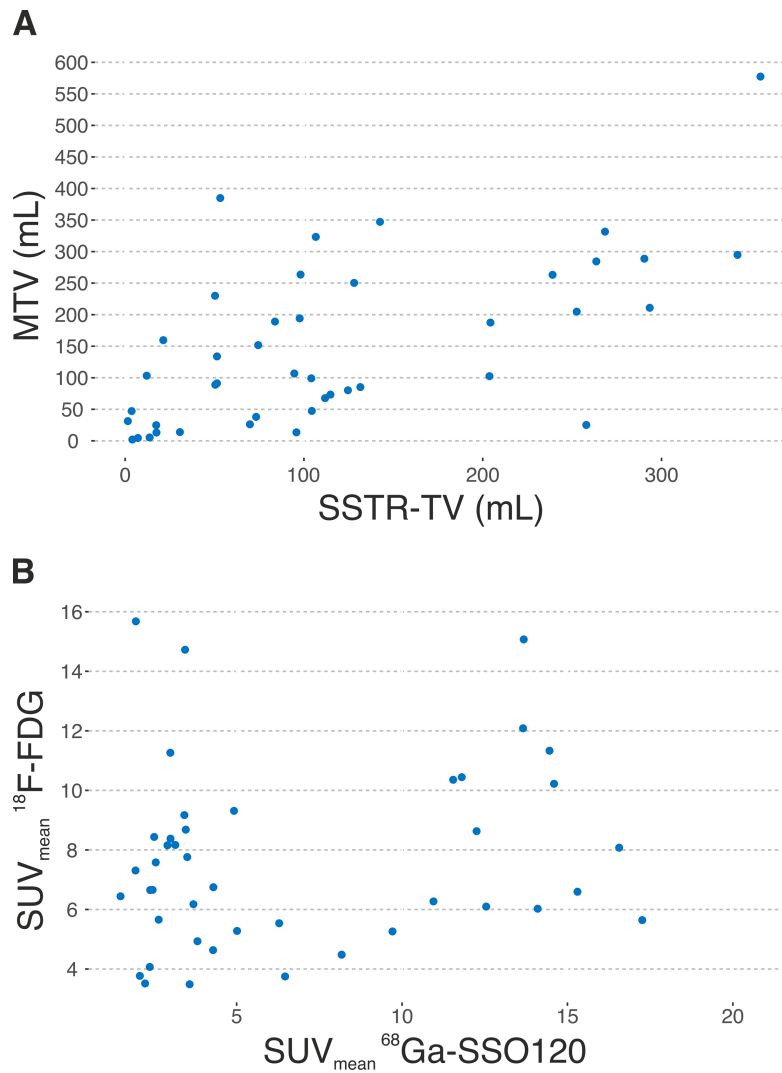
Results of Cox-regression analyses of parameters of SSTR2 expression (continuous variables) for both TTF and OS. The table indicates Hazard ratios (HR), and *p*-values. *: *p* < 0.05.

Supplemental Table S3: Comparison of OS and TTF (Stratified Cox analysis)

	HR TTF (95%-CI)	P (TTF)	HR OS (95% CI)	P (OS)
SSTR2 expression in IHC (score >0)				
No SSTR2 expression in IHC	0.32 (0.12-0.87)	0.0244 *	0.32 (0.09-1.09)	0.0684
High hottest lesion SUV_{max} (>27.6)				
Low hottest lesion SUV _{max}	0.75 (0.33-1.72)	0.499	0.45 (0.16-1.21)	0.113
High hottest lesion TLR_{peak} (>2.9)				
Low hottest lesion TLR _{peak}	0.63 (0.28-1.41)	0.259	0.30 (0.09 0.97)	0.0431*
High whole-body tumor TLR_{mean} (>5.3)				
Low whole-body tumor TLR _{mean}	0.90 (0.32-2.50)	0.833	0.46 (0.15-1.38)	0.167
High MTV (>264 mL)				
Low MTV	0.75 (0.29-1.90)	0.539	0.39 (0.13-1.09)	0.0714
High TLG (>2807)				
Low TLG	0.48 (0.16-1.42)	0.183	0.29 (0.09-0.92)	0.034*
LDH (>418 U/l)				
	0.52 (0.22-1.2)	0.1	0.57(*0.22-1.42)	0.2

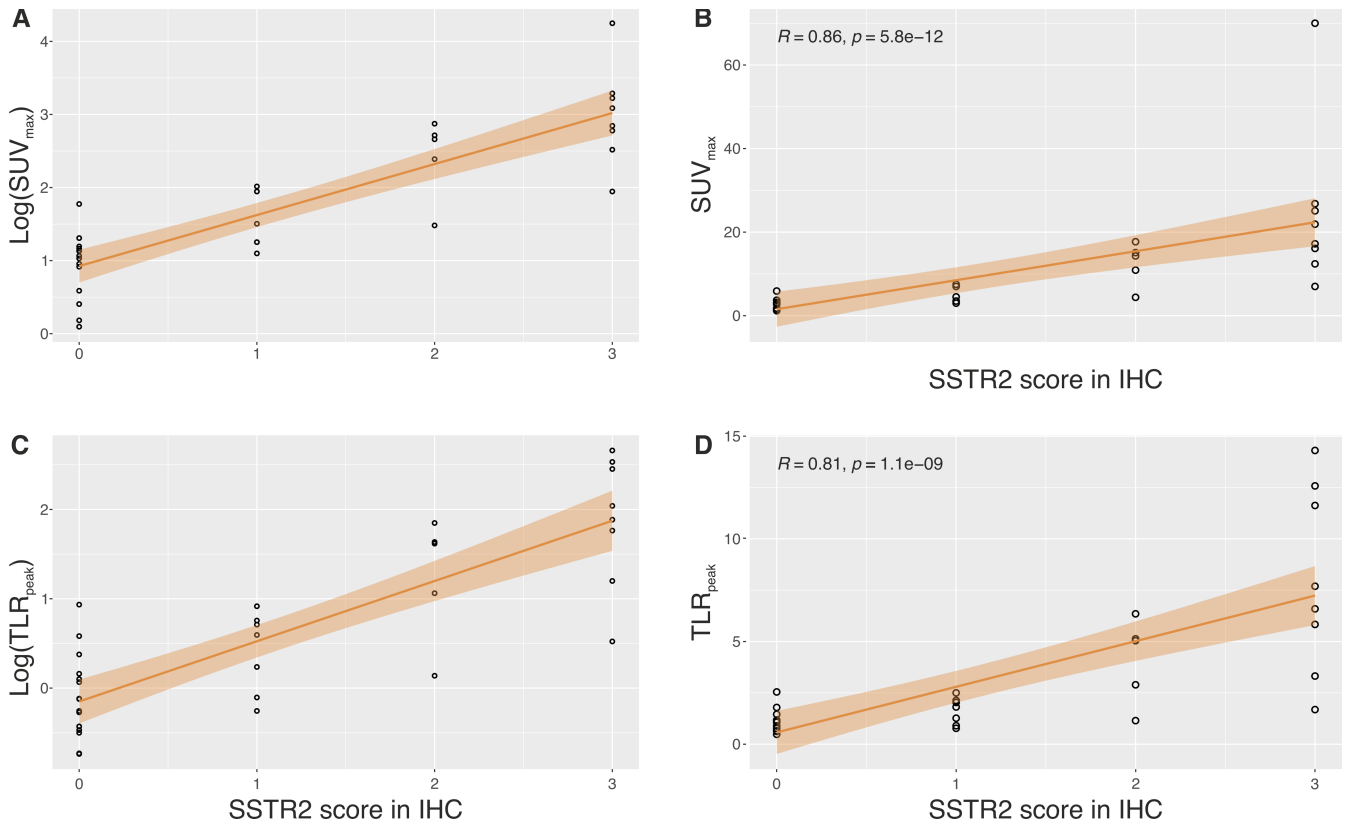
Results of Stratified Cox regression analyses of clinical, IHC-, and imaging-based parameters for both TTF and OS. The table indicates hazard ratios (HR) for different risk groups for TTF and OS and *p*-values, *: *p* < 0.05, **: *p* < 0.01.

Supplemental Figure S1: ^{68}Ga -SSO120 PET versus ^{18}F -FDG PET



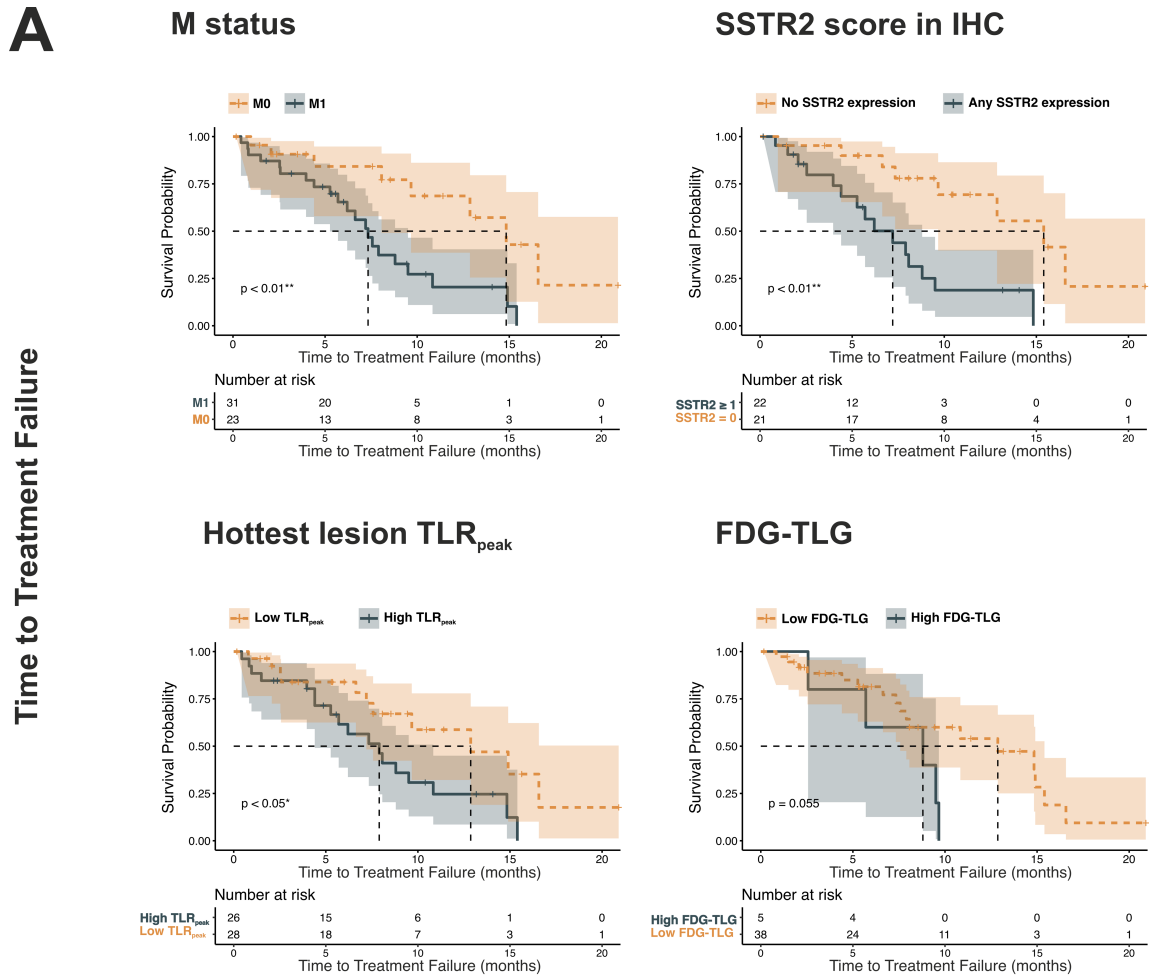
(A) Scatter plot comparing SSTR2-TV and MTV. (B) Scatter plot comparing whole-body tumor SUV_{mean} from ^{68}Ga -SSO120 PET with ^{18}F -FDG PET.

Supplemental Figure S2: Relationship between SUV_{max}/TLR_{peak} and SSTR2 score



(A) Correlation of log-transformed SUV_{max} with SSTR2 score in IHC. (B) Spearman correlation analysis of SUV_{max} and SSTR2 score in IHC. (C) Correlation of log-transformed TLR_{peak} with SSTR2 score in IHC. (D) Spearman correlation analysis of TLR_{peak} and SSTR2 score in IHC.

Supplemental Figure S3: Survival analyses for TTF



B

Time to Treatment Failure

Variable	N	Hazard ratio	p
Sex	f	30	Reference
	m	24	0.67 (0.30, 1.52) 0.34
Age	> 65y	24	Reference
	≤ 65y	30	1.09 (0.50, 2.37) 0.82
M status	M1	31	Reference
	M0	23	0.50 (0.19, 1.37) 0.18
LDH	High	10	Reference
	Low	44	0.41 (0.17, 0.99) 0.05
Hottest lesion TLR_{peak}	High	26	Reference
	Low	28	0.47 (0.20, 1.09) 0.08

(A): Kaplan-Meier curves illustrating TTF in correlation to M status, SSTR2 score in IHC, hottest lesion TLR_{peak}, and TLG. (B): Forest plot showing the results of the multivariate Cox regression for

TTF (sex, age (stratified by median), M status, LDH, hottest lesion TLR_{peak}). (High LDH: >418 U/l, high hottest lesion TLR_{peak} : >2.9).

Supplemental Figure S4: Forest Plots SSTR2 Score in IHC

A

Overall Survival

Variable		N	Hazard ratio	p
Sex	f	23	Reference	
	m	20	0.61 (0.19, 1.92)	0.40
Age	> 65y	19	Reference	
	≤ 65y	24	1.34 (0.49, 3.62)	0.57
M status	M1	22	Reference	
	M0	21	0.62 (0.17, 2.28)	0.47
LDH	High	8	Reference	
	Low	35	0.29 (0.10, 0.87)	0.03
SSTR2 score in IHC	High	22	Reference	
	Low	21	0.22 (0.06, 0.84)	0.03

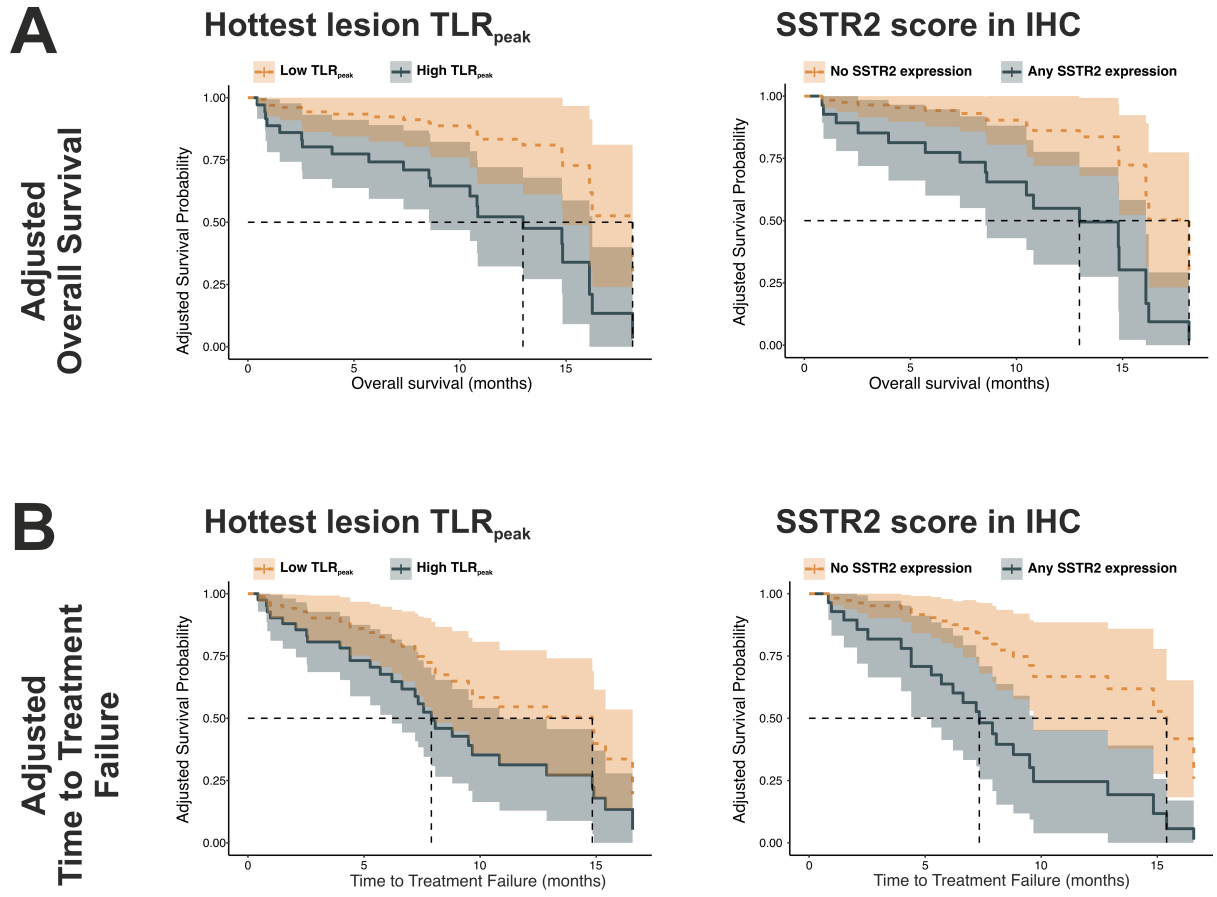
B

Time to Treatment Failure

Variable		N	Hazard ratio	p
Sex	f	23	Reference	
	m	20	0.62 (0.23, 1.65)	0.34
Age	> 65y	19	Reference	
	≤ 65y	24	0.99 (0.42, 2.34)	0.98
M status	M1	22	Reference	
	M0	21	0.64 (0.21, 1.96)	0.43
LDH	High	8	Reference	
	Low	35	0.35 (0.13, 0.94)	0.04
SSTR2 score in IHC	High	22	Reference	
	Low	21	0.24 (0.08, 0.71)	0.01

Forest plots showing the results of the multivariate Cox regression for (A) OS and (B) TTF (sex, age (stratified by median), M status, LDH, SSTR2 score in IHC). (High LDH: >418 U/l, high SSTR2 score in IHC: >0).

Supplemental Figure S5: Adjusted Kaplan Meier curves



Adjusted Kaplan-Meier curves for hottest lesion TLR_{peak} and SSTR2 score in IHC with (A) OS and (B) TTF.