

1 Supplementary Material

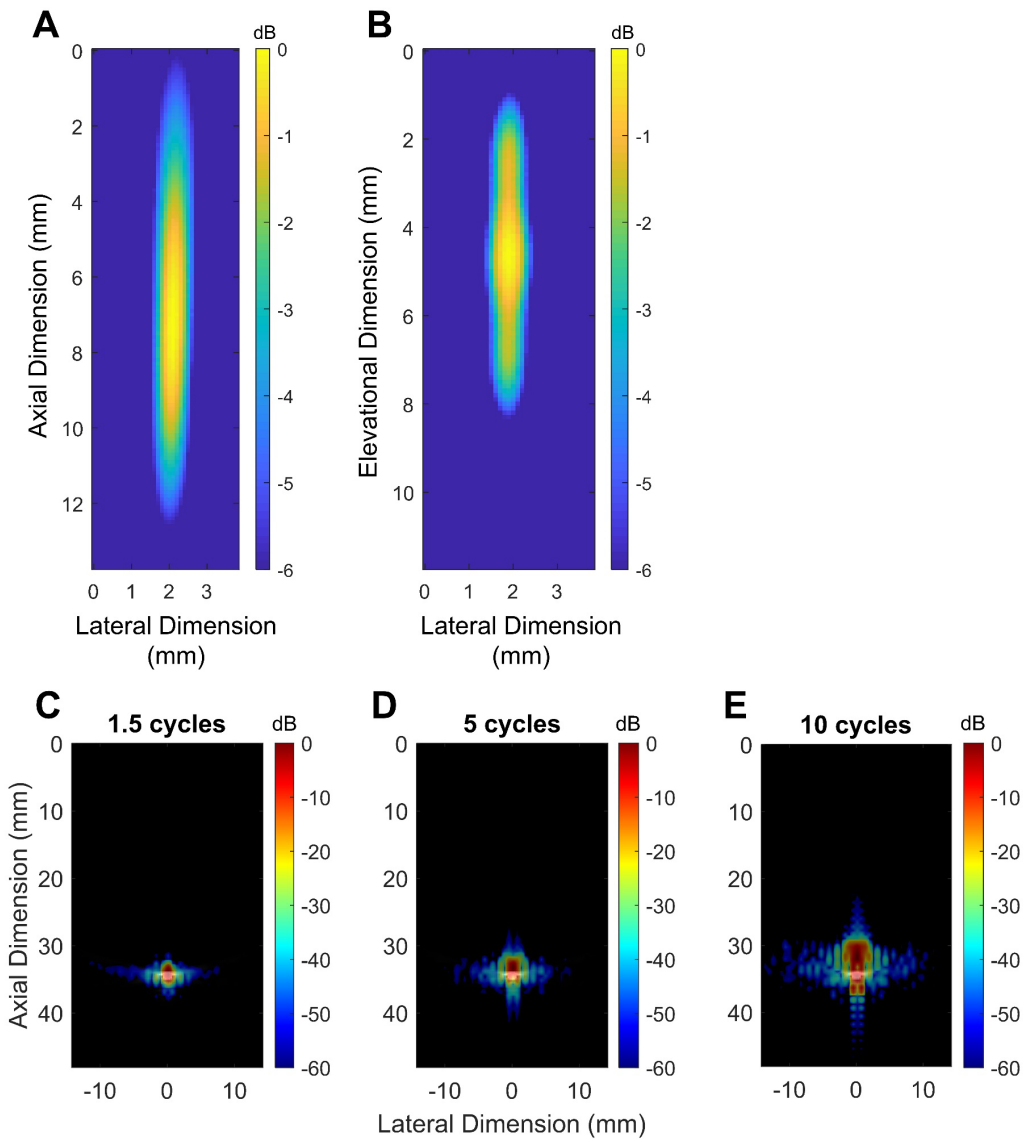


Figure S1: ThUS focal dimensions and PCI point spread function. **A)** -6 dB (pressure) focal region in axial/lateral plane. **B)** -6 dB focal region in elevational/lateral plane. PCI PSF overlaid onto B-mode image of a 0.30 mm-thick metal wire cross-section for **C)** 1.5-cycle, **D)** 5-cycle, and **E)** 10-cycle USPLs.

2
3

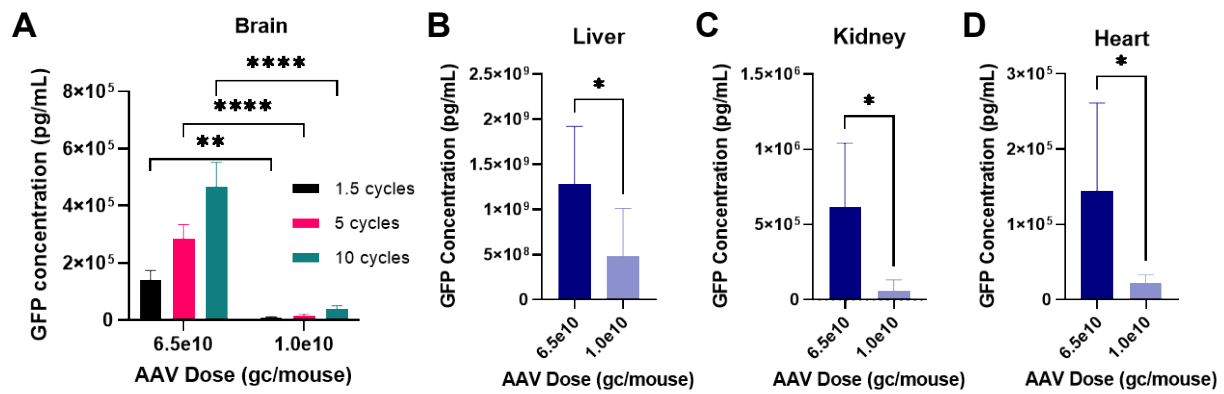


Figure S2: Reduction in brain and peripheral organ transgene expression with reduced systemic AAV dose. **A)** Significant decreases in whole brain hemisphere GFP concentration quantified by ELISA with AAV dose reduction at all USPLs evaluated. Significant decreases in **B)** liver, **C)** kidney, and **D)** heart GFP concentration with AAV dose reduction. Statistical significance in (A) determined by two-way ANOVA with Sidak multiple comparisons correction, and (B) by student's t-test. * $p < 0.05$, ** $p < 0.01$, **** $p < 0.0001$, $n = 4-6$ per group.