

Figure S1

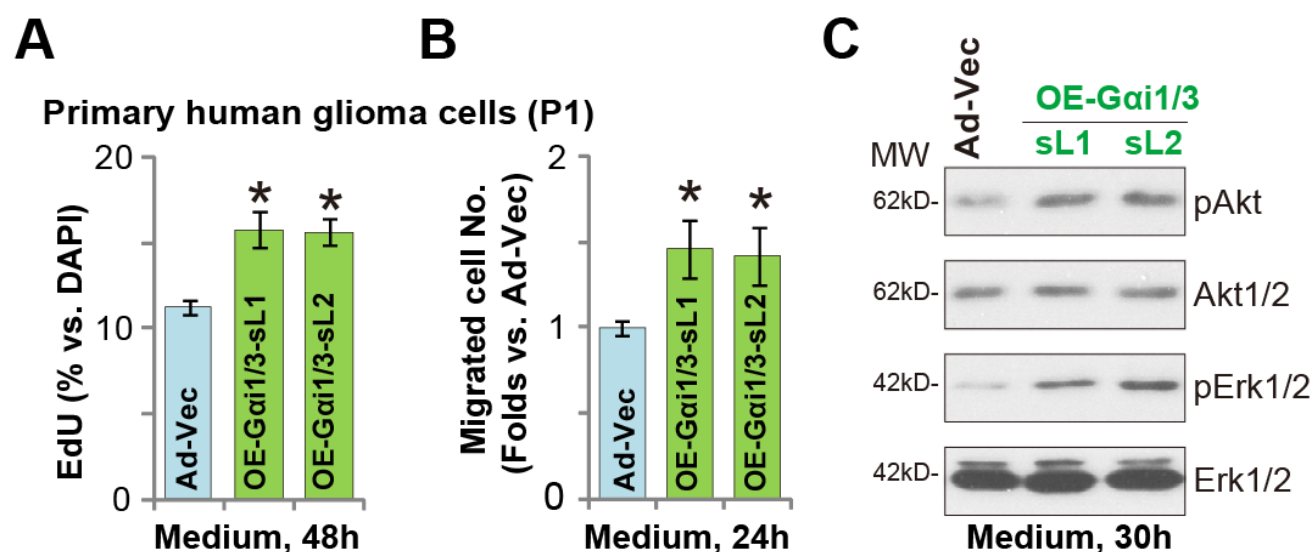


Figure S1. P1 glioma cells, with the adenovirus Gai1 construct plus the adenovirus Gai3 construct ("OE-Gai1/3", two lines: "sL1/sL2") or empty vector ("Ad-Vec"), were cultured in complete medium for applied time period, cell proliferation (**A**, by recording EdU-positive nuclei ratio) and migration (**B**, "Transwell" assays) were tested; Listed proteins were shown (**C**). Blotting data was repeated five times (**C**). * $P < 0.05$ vs. "Ad-Vec" cells.

Figure S2

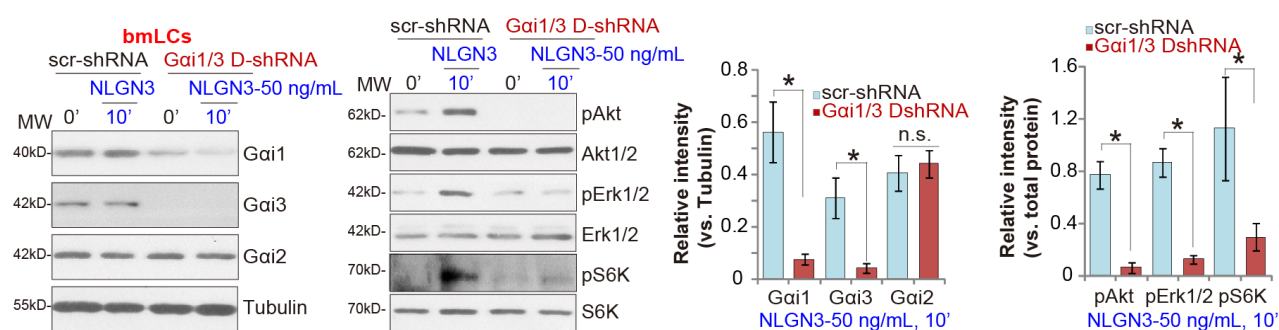


Figure S2. The brain-metastatic human lung cancer cells (“bmLCs”), with Gai1 shRNA plus Gai3 shRNA (“Gai1/3 DshRNA”) or the scramble control shRNA (“scr-shRNA”), were treated with NLGN3 (50 ng/mL) for applied time periods, expressions of the listed proteins were tested by Western blotting assays; Quantifications were from five replicate blot data. * $P < 0.05$. “n.s.” stands for no statistical differences.