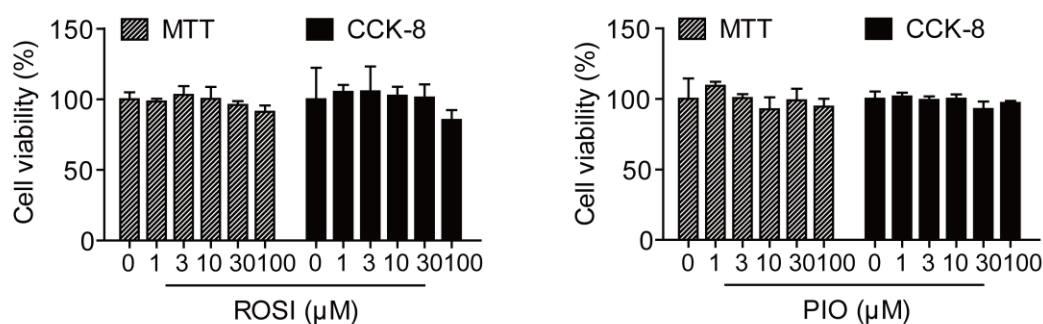


Supplementary Materials

A



B

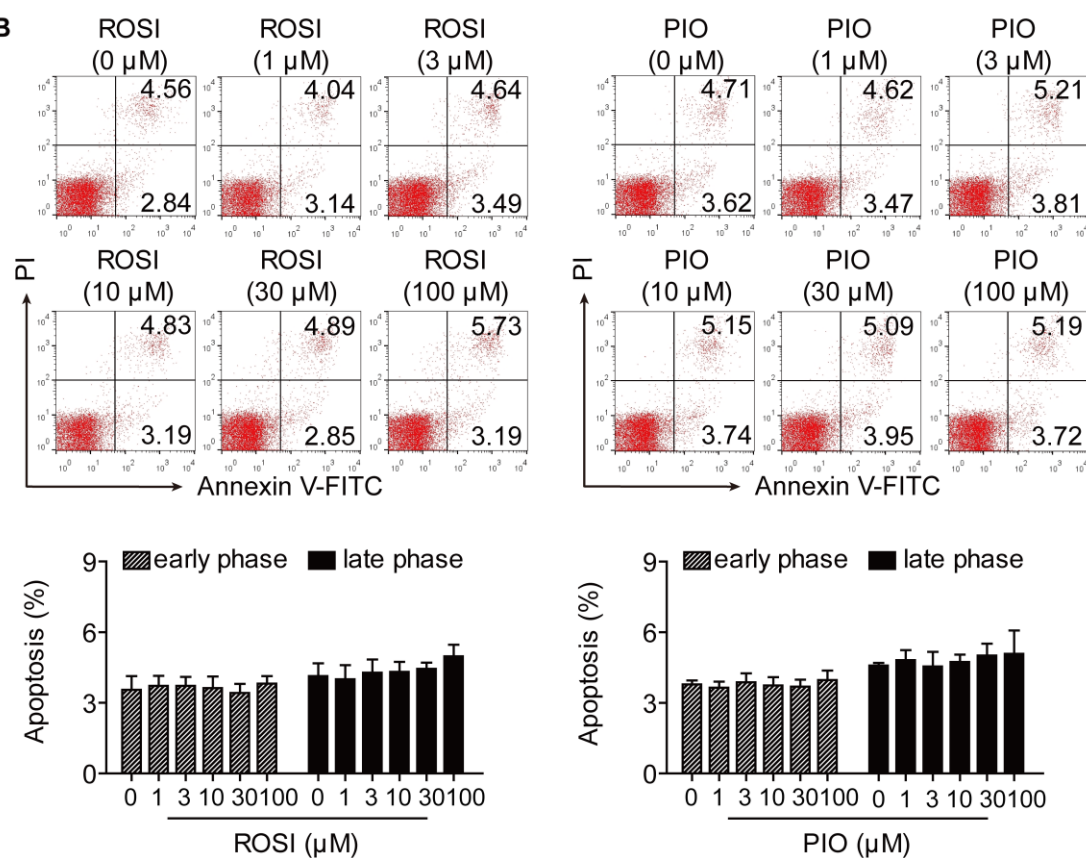


Figure S1 Cellular toxicity of rosiglitazone and pioglitazone. (A-B) Cells isolated from mesenteric lymph nodes were cultured with rosiglitazone (ROSI; 0, 1, 3, 10, 30, 100 μM) and pioglitazone (PIO; 0, 1, 3, 10, 30, 100 μM) for 72 h. The cell viability was analyzed by MTT and CCK-8 assay (A), and the cell apoptosis was examined by Annexin V-FITC/PI assay (B). Data were presented as the means \pm S.E.M. of three independent experiments.

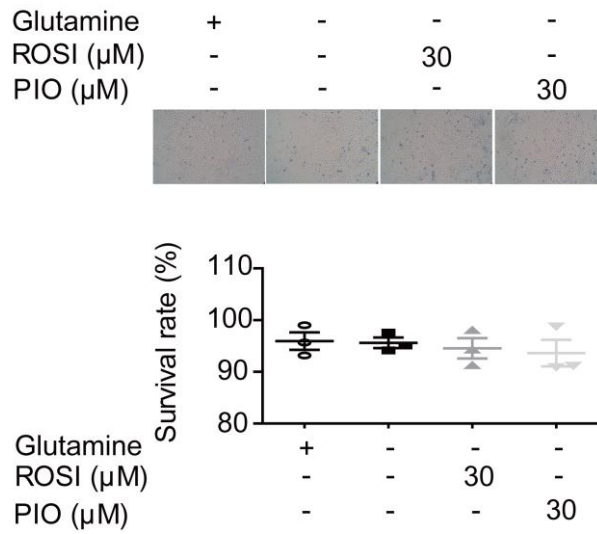


Figure S2 Cellular toxicity of glutamine deprivation. Cells isolated from mesenteric lymph nodes were cultured with or without glutamine (2 mM), rosiglitazone (ROSI; 30 μM) as well as pioglitazone (PIO; 30 μM) for 72 h. The cell survival rate was analyzed by trypan blue exclusion assay. Data were presented as the means \pm S.E.M. of three independent experiments.