

## **Supplemental data**

### **Mesenchymal stem cell-mediated immunomodulation of recruited mononuclear phagocytes during acute lung injury: a high-dimensional analysis study**

Jingqi Liu<sup>1†</sup>, Pan Li<sup>1,2†</sup>, Jiaqi Zhu<sup>1,2</sup>, Feiyan Lin<sup>1,2</sup>, Jiahang Zhou<sup>1,2</sup>, Bing Feng<sup>1,2</sup>, Xinyu Sheng<sup>1,2</sup>, Xiaowei Shi<sup>1</sup>, Qiaoling Pan<sup>1,2</sup>, Jiong Yu<sup>1,2</sup>, Jianqing Gao<sup>4</sup>, Lanjuan Li<sup>1,2</sup>, Hongcui Cao<sup>\*1,2,3</sup>

1 State Key Laboratory for the Diagnosis and Treatment of Infectious Diseases, Collaborative Innovation Center for Diagnosis and Treatment of Infectious Diseases, The First Affiliated Hospital, Zhejiang University School of Medicine, 79 Qingchun Rd., Hangzhou City 310003, China

2 National Clinical Research Center for Infectious Diseases, 79 Qingchun Rd., Hangzhou City 310003, China

3 Zhejiang Provincial Key Laboratory for Diagnosis and Treatment of Aging and Physic-chemical Injury Diseases, 79 Qingchun Rd, Hangzhou City 310003, China.

4 College of Pharmaceutical Sciences and Dr. Li Dak Sum & Yip Yio Chin Center for Stem Cell and Regenerative Medicine, Zhejiang University, Hangzhou 310058, China

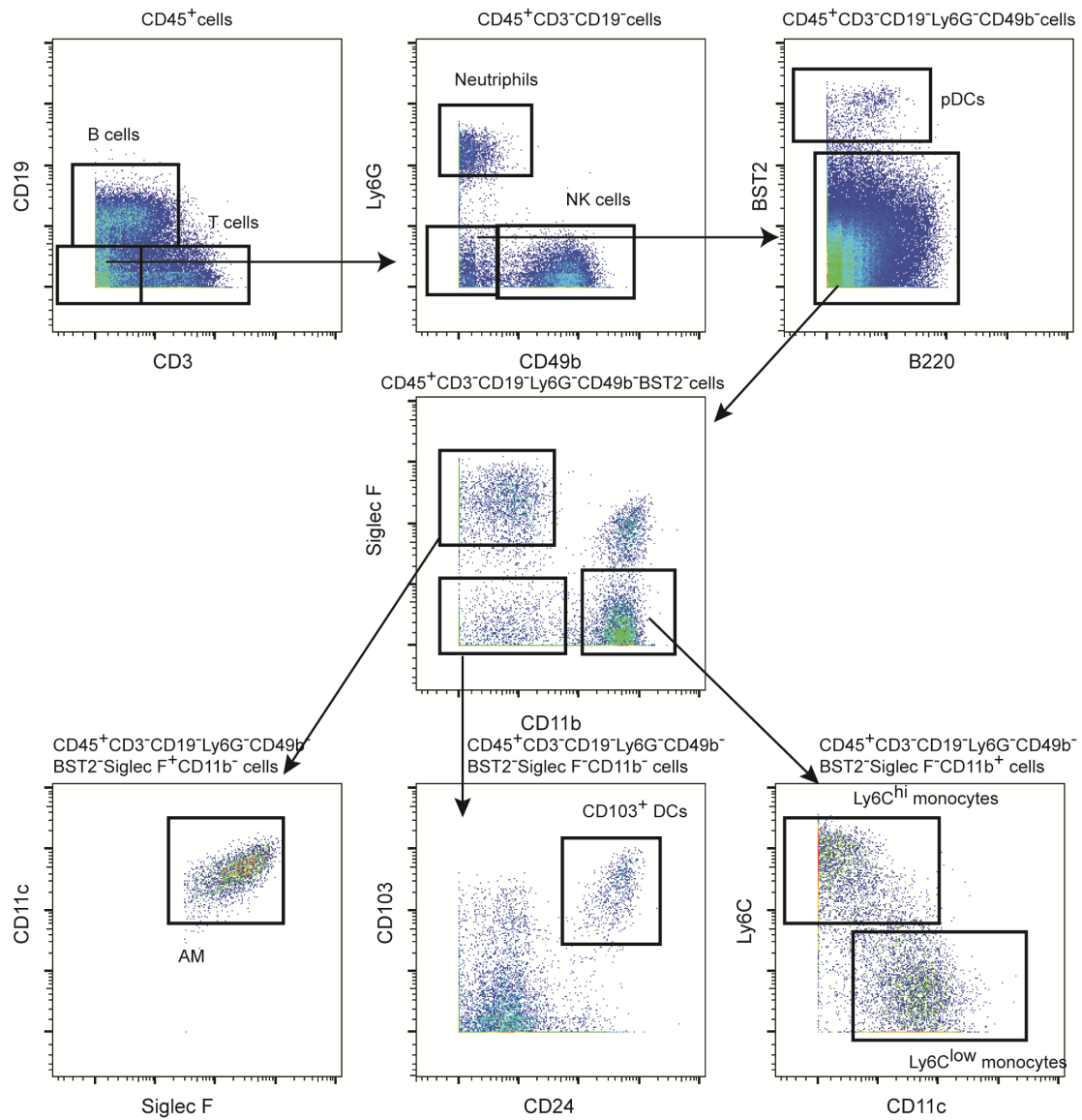
† These authors contributed equally to this work.

#### **\*Corresponding author:**

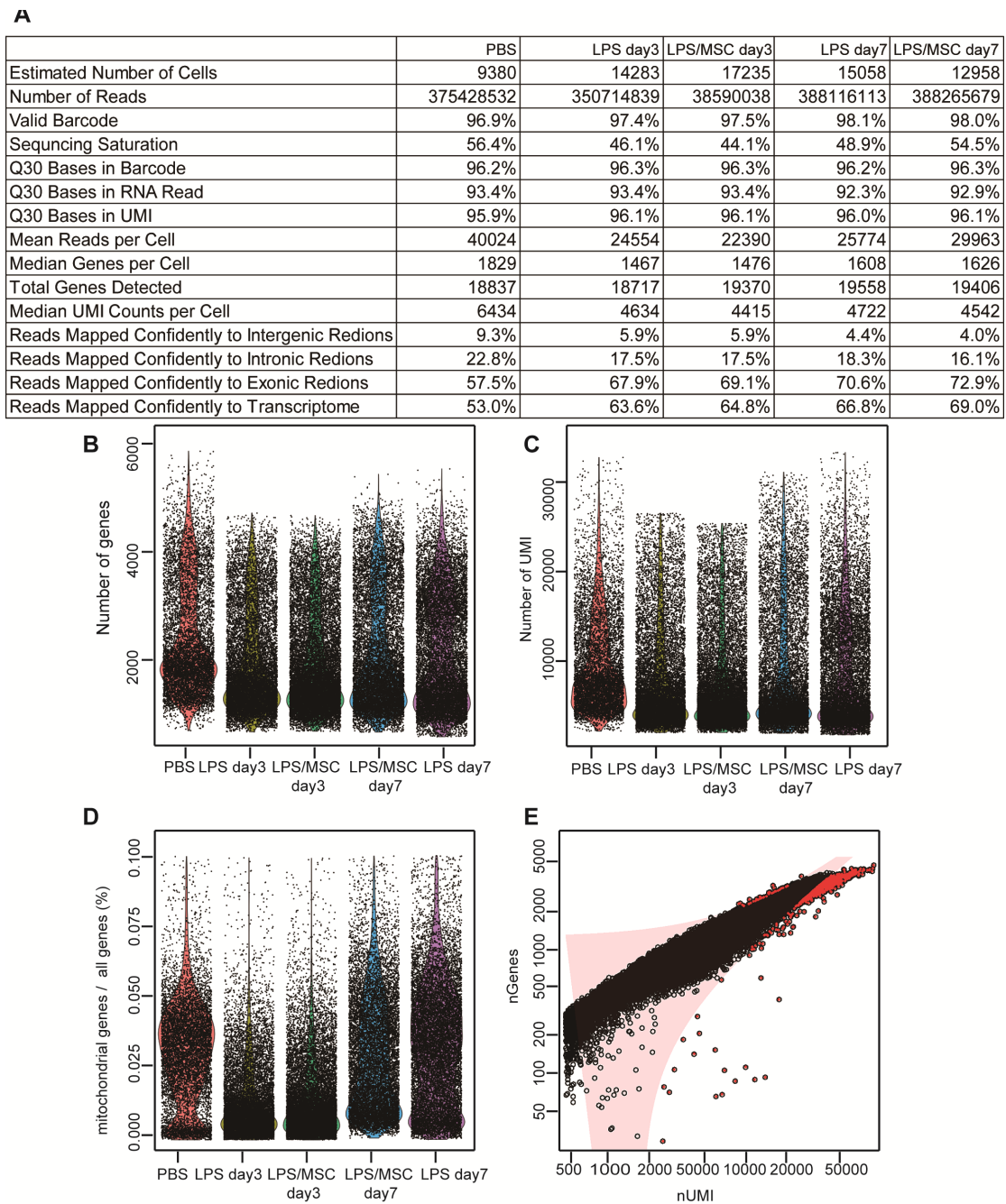
Hongcui Cao

State Key Laboratory for the Diagnosis and Treatment of Infectious Diseases, The First Affiliated Hospital, Zhejiang University School of Medicine, 79 Qingchun Rd., Hangzhou City 310003, China. Tel: 86-571-87236451; Fax: 86-571-87236459

E-mail: [hccao@zju.edu.cn](mailto:hccao@zju.edu.cn)



**Figure S1. Gating strategy for ALI-recruited MNPs.**

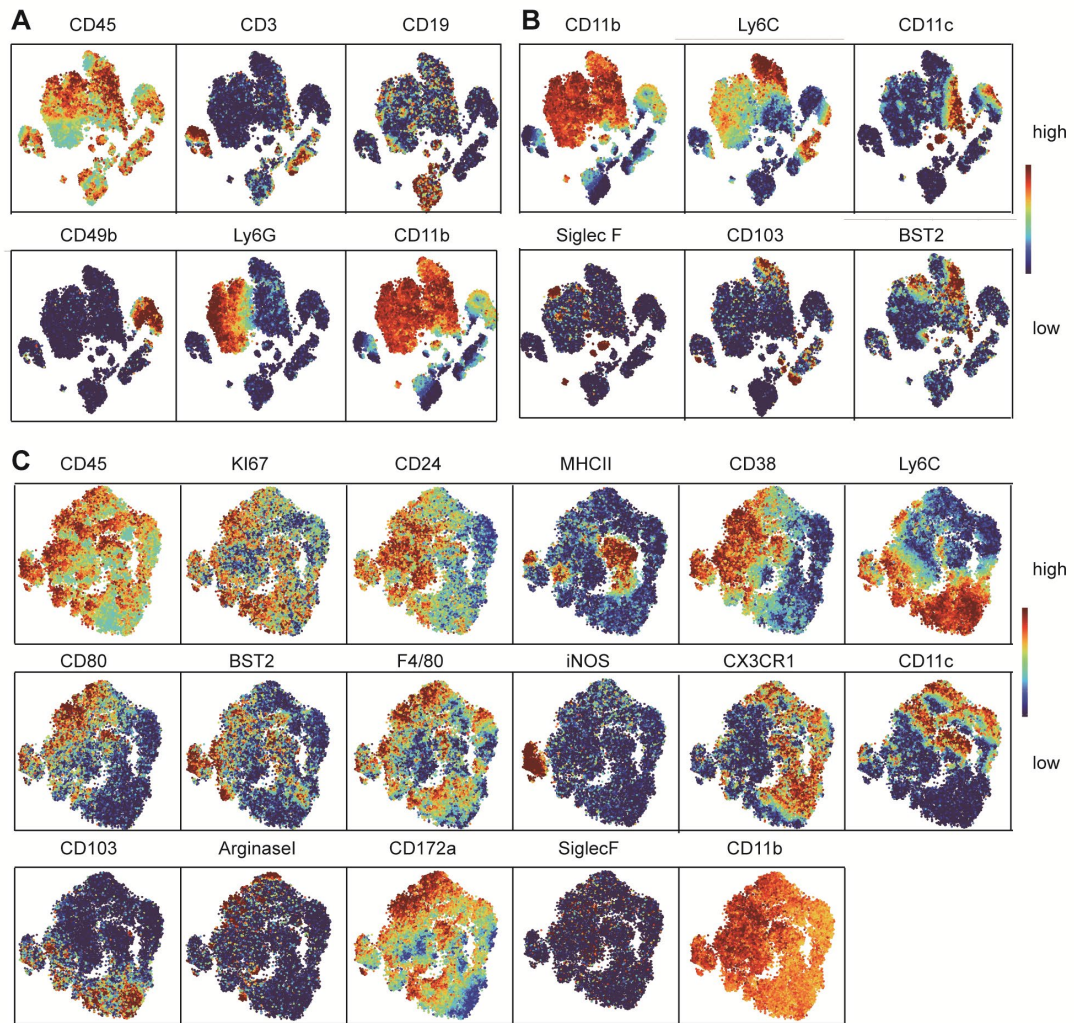


**Figure S2. Quality controls for scRNA-seq of mouse lung immune cells. (A)** Sequencing parameters of  $CD45^+$  mouse lung immune cells subjected to  $10\times$ Genomics scRNA-seq platform. **(B)** Genes number of  $CD45^+$  mouse lung immune cells within each sample. **(C)** Unique molecular identifier number per cell for each sample. **(D)** Mitochondrial genes/all genes (%) in each  $CD45^+$  mouse lung immune cells transcriptomes of each sample. **(E)** Total genes number/cell in relation to unique molecular identifier counts are shown.

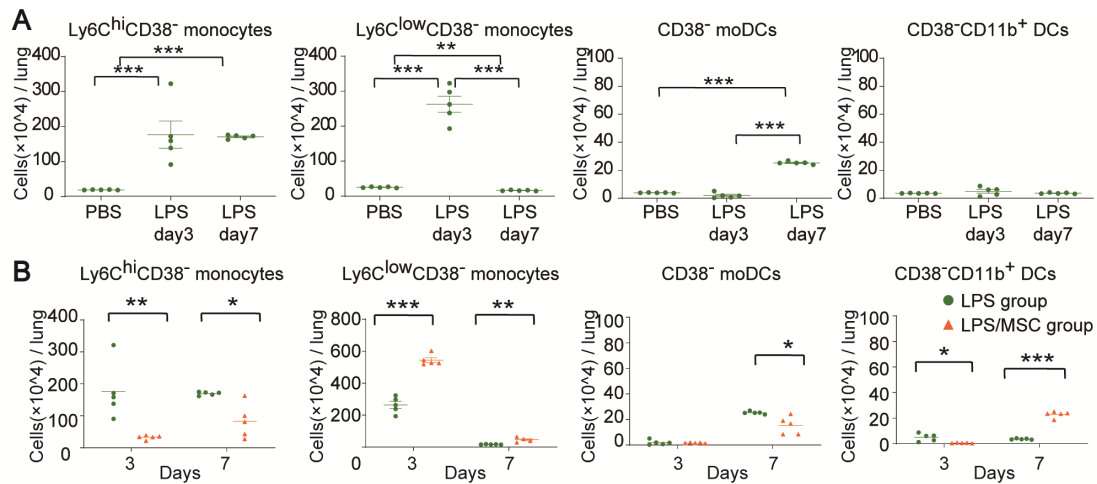




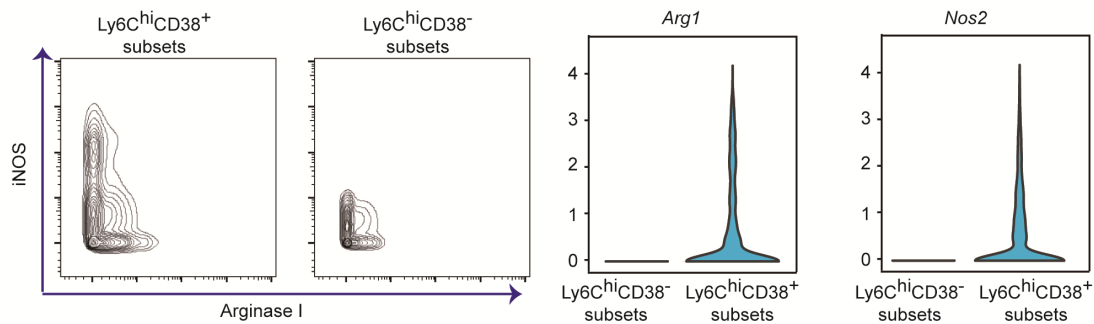




**Figure S6.** viSNE map showing normalized expression of selected marker. **(A)** Expressed on B cells, T cells, NK cells, MNPs. **(B)** Expressed on MNP subsets. **(C)** Expressed on recruited MNPs subsets.



**Figure S7. Identification of MSCs-specific alterations in ALI-recruited MNP subsets.** (A) Number of Ly6<sup>hi</sup>CD38<sup>-</sup> monocytes, Ly6<sup>low</sup>CD38<sup>-</sup> monocytes, CD38<sup>-</sup> mo-DCs and CD38<sup>-</sup>CD11b<sup>+</sup> DCs in PBS and LPS groups. (B) Number of Ly6<sup>hi</sup>CD38<sup>-</sup> monocytes, Ly6<sup>low</sup>CD38<sup>-</sup> monocytes, CD38<sup>-</sup> mo-DCs and CD38<sup>-</sup>CD11b<sup>+</sup> DCs in LPS and LPS/MSc groups. (n=5, \**p* < 0.05, \*\**p* < 0.01, and \*\*\**p* < 0.001 by paired *t* test).



**Figure S8. Expression pattern of M1 and M2 specific markers and genes on Ly6<sup>hi</sup>CD38<sup>-</sup> and Ly6<sup>hi</sup>CD38<sup>+</sup> monocytes.** (A) iNOS and Arginase I protein expression level on Ly6<sup>hi</sup>CD38<sup>-</sup> and Ly6<sup>hi</sup>CD38<sup>+</sup> monocytes. (B) *nos2* and *Arg1* gene expression level on Ly6<sup>hi</sup>CD38<sup>-</sup> and Ly6<sup>hi</sup>CD38<sup>+</sup> monocytes