

Supplementary Information

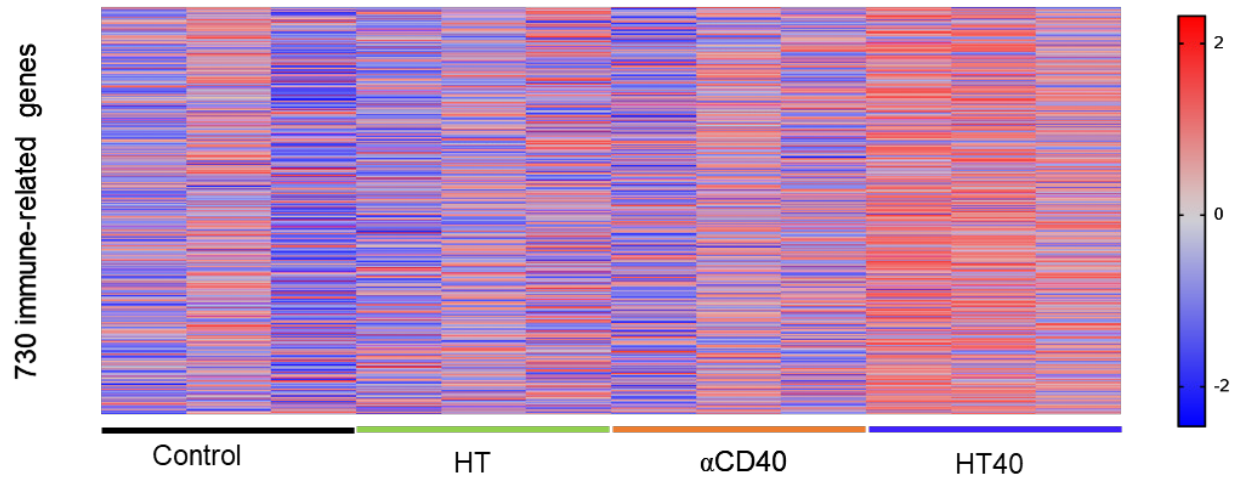


Figure S1. Pan cancer immune profiling by nanostring analysis assessed 730 immuno regulatory genes in the treated tumors (n = 3 per group).

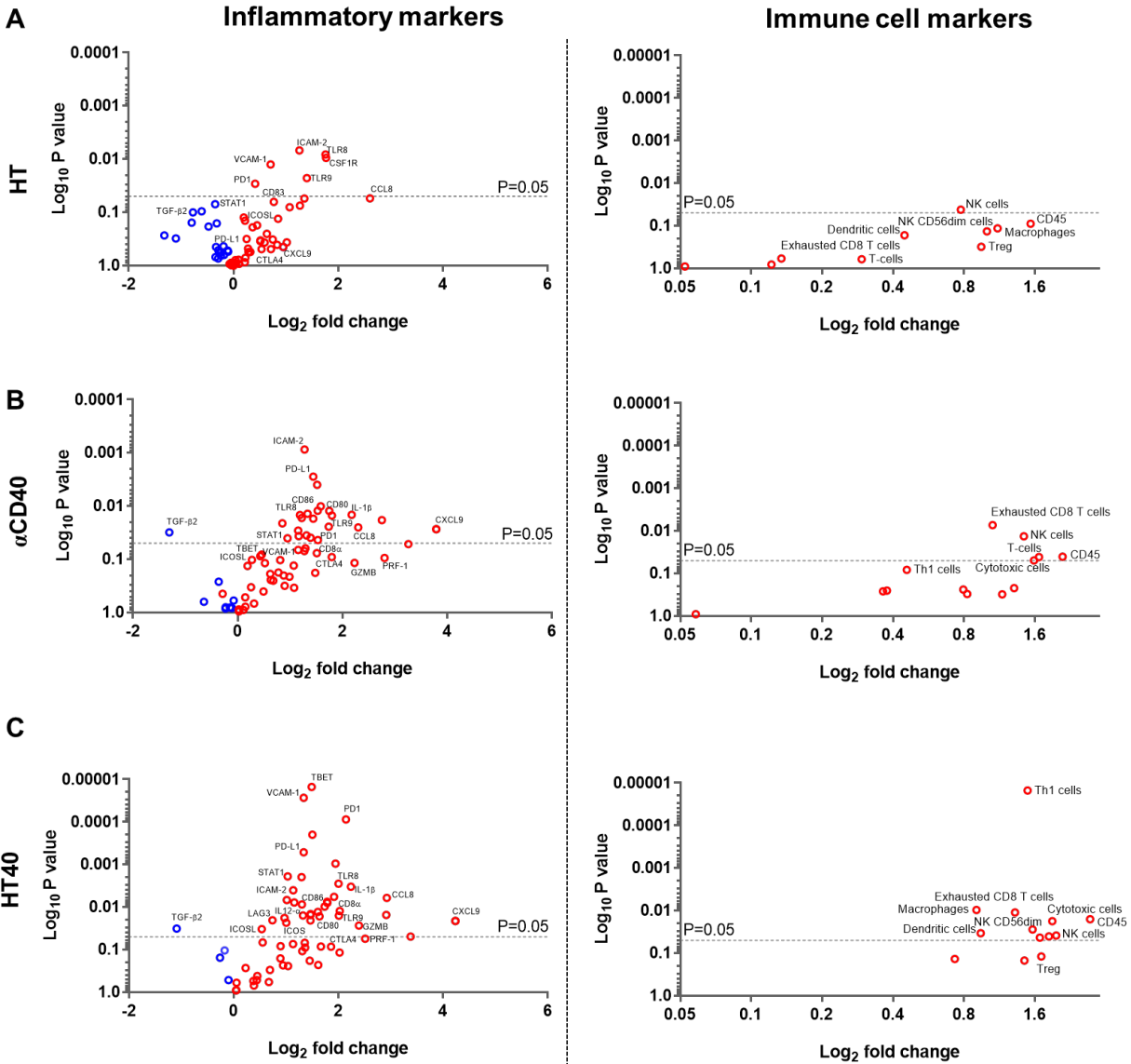


Figure S2. Quantitative assessment of inflammatory and immune cell markers. (A-C) Significantly higher expression of cell adhesion molecules, chemokines, innate sensors, activation status of APCs, natural killer cells (NK), and T cells was noted in HT40 tumors relative to control. The volcano plots represent log2 fold change in gene expression compared to control. Statistical analysis was performed using multiple t-tests without multiple comparisons correction. $p < 0.05$ is considered significant.