

## Erratum

# Erratum: $\beta$ Klotho is identified as a target for theranostics in non-small cell lung cancer: Erratum

Fan Li<sup>1</sup>, Xiyao Li<sup>1</sup>, Ziming Li<sup>2</sup>, Wenxiang Ji<sup>2</sup>, Shun Lu<sup>2</sup>, Weiliang Xia<sup>1</sup>✉

1. State Key Laboratory of Oncogenes and Related Genes, Renji-Med X Clinical Stem Cell Research Center, Ren Ji Hospital, School of Medicine and School of Biomedical Engineering, Shanghai Jiao Tong University, Shanghai, China
2. Shanghai Lung Cancer Center, Shanghai Chest Hospital, Shanghai Jiao Tong University, Shanghai, China

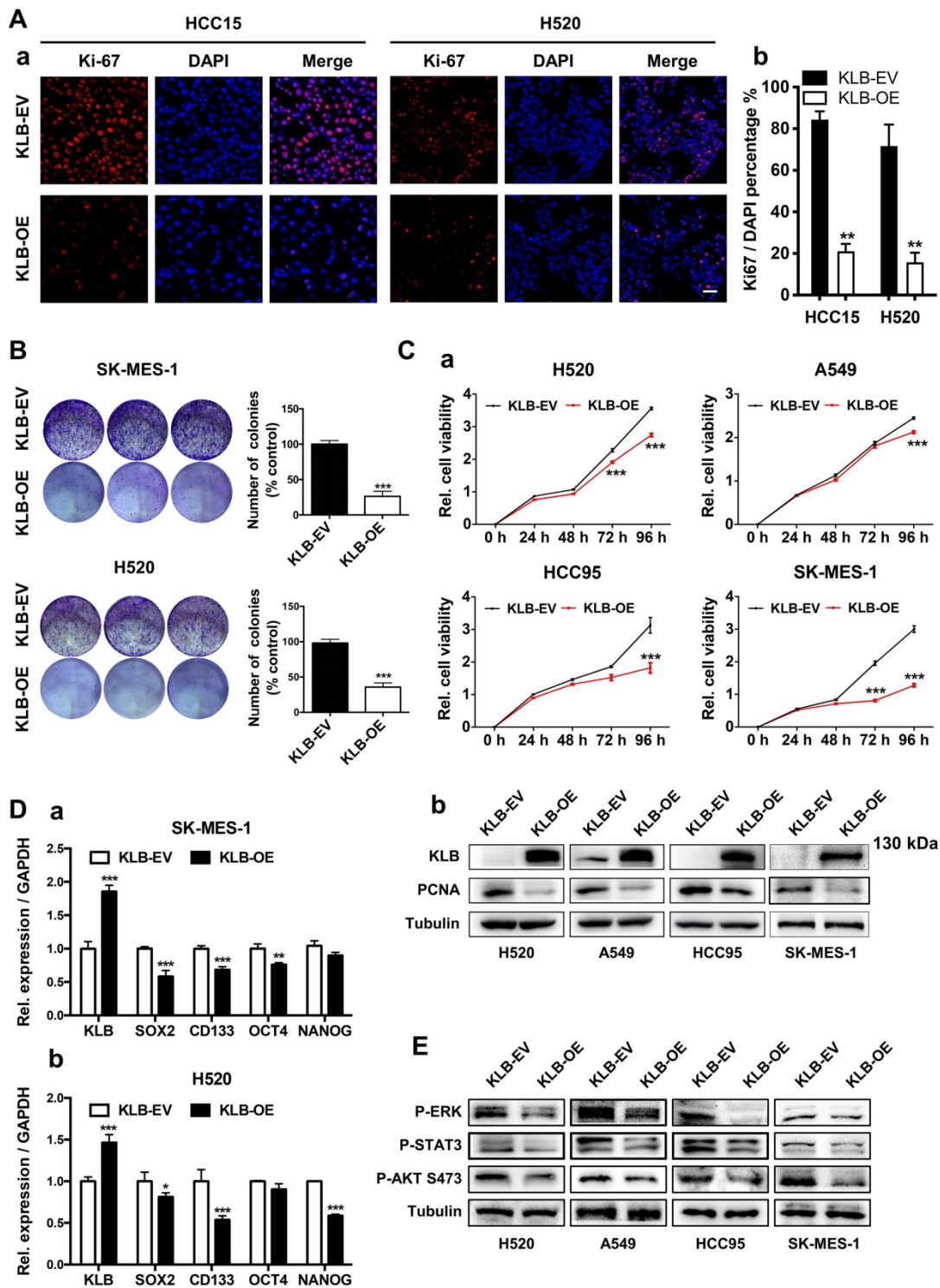
✉ Corresponding author: Weiliang Xia, PhD, School of Biomedical Engineering and Med-X Research Institute, Shanghai Jiao Tong University, 1954 Huashan Road, Shanghai, 200030, China. Phone: +86-21-62933351; Mobil: +86-13585887951. E-mail: wxia@sjtu.edu.cn

© The author(s). This is an open access article distributed under the terms of the Creative Commons Attribution License (<https://creativecommons.org/licenses/by/4.0/>). See <http://ivyspring.com/terms> for full terms and conditions.

Published: 2020.04.12

Corrected article: *Theranostics* 2019; 9(25):7474-7489. doi:10.7150/thno.35582.

In our paper [1], Figure 3 should be corrected as follows.



**Figure 3. High levels of KLB inhibit the proliferation and inhibits ERK, STAT3, AKT pathway of human NSCLC cells. A.** Cancer cells were transfected with a pCDH-KLB expression vector (KLB-OE) or a control pCDH vector (KLB-EV). IF staining of Ki67(red) and DAPI (for nucleus, blue) in HCC15 and H520 cells after transfection. Scale bar = 50  $\mu$ m. The right panel was % of Ki-67 positive cells. **B.** Colony formation in SK-MES-1 and H520 cells. **C. (a)** Cell viability assay of stably overexpressed (KLB-OE) and control (KLB-EV) cancer cells. **(b)** Protein levels of KLB and proliferation marker PCNA were determined by western blot. **D.** qRT-PCR analysis of stemness-related genes in **(a)** SK-MES-1 cells and **(b)** H520 cells. **E.** Overexpression of KLB suppressed ERK, STAT3, AKT pathway. Data were represented as mean and SEM from three independent experiments. \* P < 0.05. \*\* P < 0.01. \*\*\* P < 0.001.

The corrected figures do not affect the original conclusions of the findings.

## References

[1] Li F, Li X, Li Z, Ji W, Lu S, Xia W.  $\beta$ Klotho is identified as a target for theranostics in non-small cell lung cancer. *Theranostics* 2019; 9: 7474-7489.