

SUPPLEMENTAL FIGURES LEGEND

S1

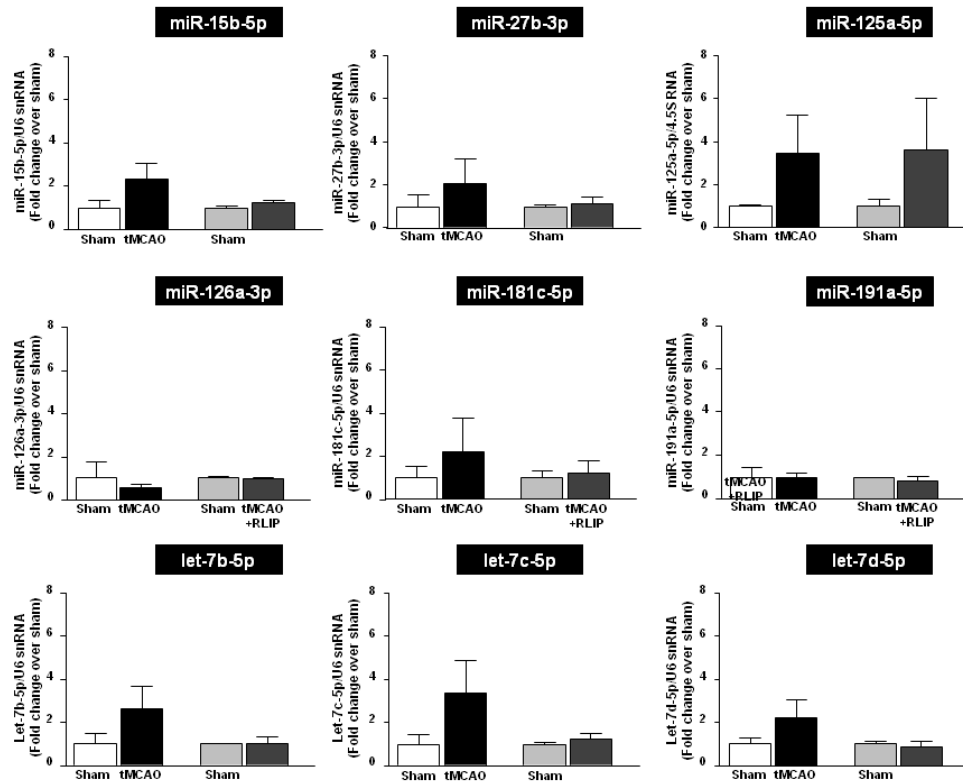
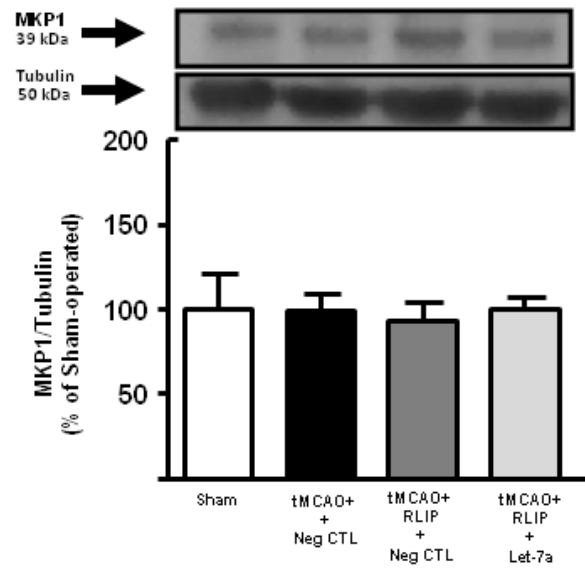


Figure S1. Completing 21 miRNA comparison after microarray. MicroRNA levels analysed by Real-Time PCR in ischemic brain regions from rats subjected to tMCAO and tMCAO + RLIP are expressed as fold change over the respective sham-operated controls. Each column represents the mean \pm S.E.M. Results of microRNAs expression were normalized with respect to 4.5S RNA as internal control. n = 3 or 4 per group. *: p < 0.05 vs. Sham-operated group. #: p < 0.05 vs. tMCAO Group.



A



B

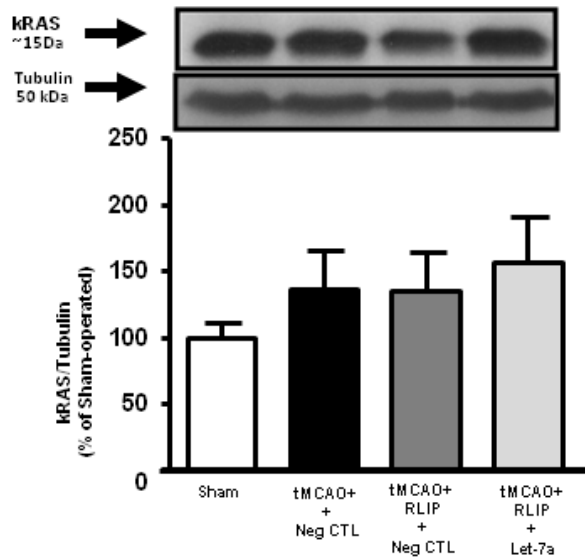


Figure S2. Let-7a did not affected protein expression of KRAS and MKP1

Evaluation of MKP1 and kRAS protein expression in ischemic rats subjected to remote limb postconditioning, intracerebroventricularly infused with mimic-let-7a-5p and sacrificed at 24 h from reperfusion. Protein levels are expressed as percentage versus the sham-operated controls. Each column represents the mean \pm S.E.M. Results of protein expression were normalized with respect to α -tubulin. On the top of each graph, representative blots of MKP1 and kRAS and α -tubulin signals are shown (A) MKP1 protein levels in cortex (n = 4 samples per each group). (B) kRAS protein levels in cortex (n = 4 samples per each group). *: p < 0.05 vs. sham-operated controls.