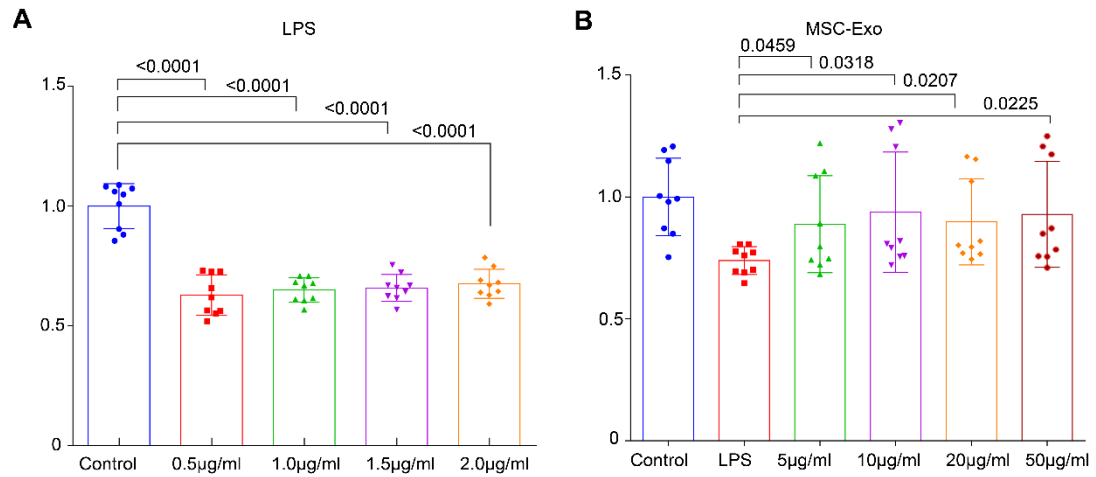
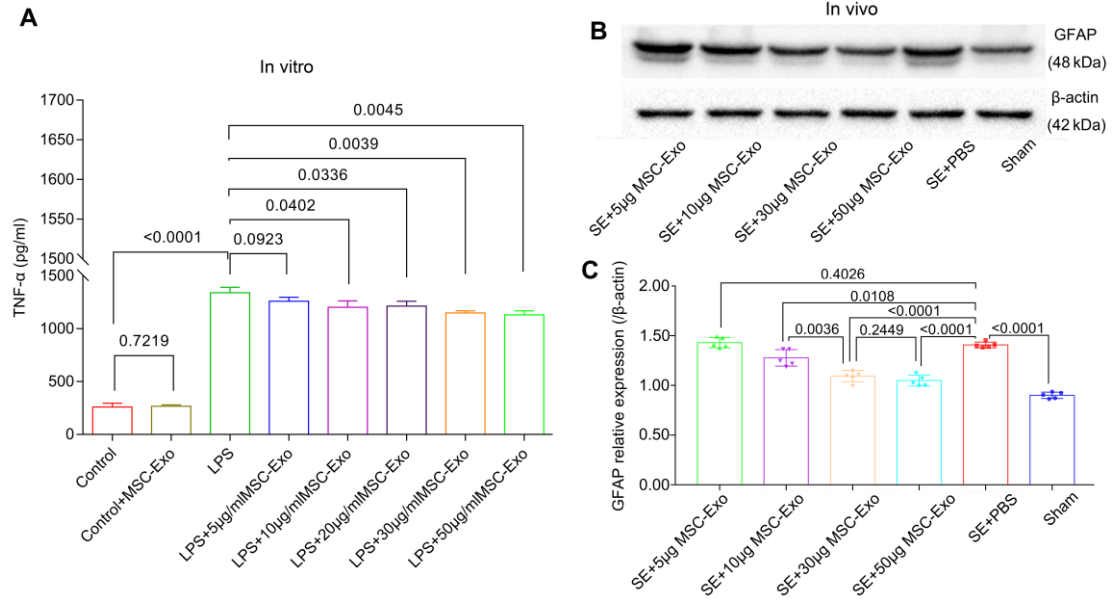


Figure S1. Cell viability of primary cultured hippocampal astrocytes after LPS or MSC-Exo administration using CCK-8 assay



(A) Histograms of different concentrations of LPS-induced cytotoxicity on the primary culture of hippocampal astrocytes. (B) Dose-response effects of MSC-Exo on cell viability in LPS-induced primary cultured astrocytes.

Figure S2. Dose-response effects of MSC-Exo on inflammation-induced astrocytic activation *in vitro* and *in vivo*



MSC-Exo effects on TNF α and GFAP relative expression in LPS-stimulated astrocytes *in vitro* (A) and SE mice *in vivo* (B and C). Note a linear decrease in TNF α expression with increasing doses of MSC-Exo (A) and a similar linear decrease of GFAP expression in SE mice (B, C). Panel B shows Western blotting results corresponding to each column in C. 10 μ g/ml (*in vitro*) and 30 μ g/per mouse (*in vivo*) MSC-Exo was employed in this study.