

SUPPLEMENTAL INFORMATION

SUPPLEMENTAL TABLES

Table S1. Oligonucleotide pairs used for qPCR

Gene	5' - 3' forward	5' - 3' reverse
NPPA	ATGGGCTCCTTCTCCATCAC	TCTACCGGCATCTTCTCCTC
NPPB	AAGTCCTAGCCAGTCTCCAGA	GAGCTGTCTCTGGGCCATTC
TIMP-1	CTGCTCAGCAAAGAGCTTTC	CTCCAGTTTGCAAGGGATAG
Col1a1	CTTCACCTACAGCACCCCTTGTG	CTTGGTGGTTTTGTATTCGATGAC
Col3a1	GCGATTCAAGGCTGAAG	GGGTGCGATATCTATGATGG
IL6	TCCCAACAGACCTGTCTATAC	CAGAATTGCCATTGCACAACCTC
LGALS3	CCCGCTTCAATGAGAACAAC	ACCGCAACCTTGAAGTGGTC
GDF-15	TGACCCAGCTGTCCGGATAC	GTGCACGCGGTAGGCTTC
36b4	AAGCGCTCCTGGCATTGTC	GCAGCCGCAAATGCAGATGG

Table S2. Bodyweight, and corrected LV weights

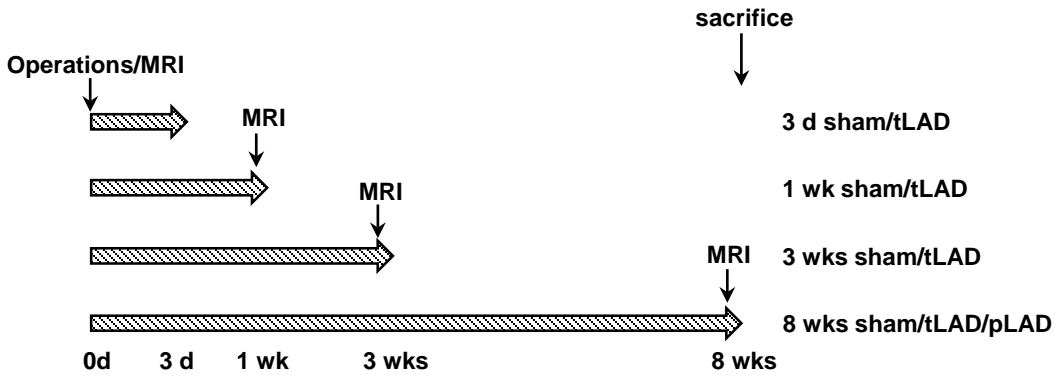
Group	BW	LV/TL (mg/mm)
Sham (8 weeks)	31.2 ± 0.6	6.5 ± 0.2
tLAD (8 weeks)	28.9 ± 0.6	6.5 ± 0.2
pLAD (8 weeks)	31.4 ± 0.5 [#]	8.9 ± 0.3 ^{*#}
Sham	27,7 ± 0,5	6,43 ± 0,14
TAC4	25,1 ± 0,4 [*]	10,26 ± 0,4 [*]
TAC8	27,1 ± 0,8	12,30 ± 0,4 ^{*#}
Sham	31.7 ± 0.8	7.0 ± 0.2
HFD	42.8 ± 1.9 [*]	7.3 ± 0.3
HFD+AngII	38.5 ± 1.1 ^{*#}	9.4 ± 0.4 ^{*#}

BW=bodyweight; LV/TL=Left ventricular weight divided by tibia length. N=7-12

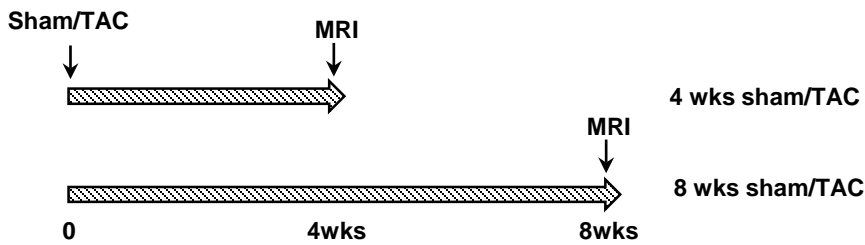
* p<0.05 as compared to sham control; # p<0.05 as compared to tLAD, TAC4 or HFD, respectively.

Figure S1

A. Temporal and permanent LAD ligation (tLAD+pLAD +sham)



B. Transverse aortic constriction (TAC)



C. LFD/HFD with or without AngII infusion

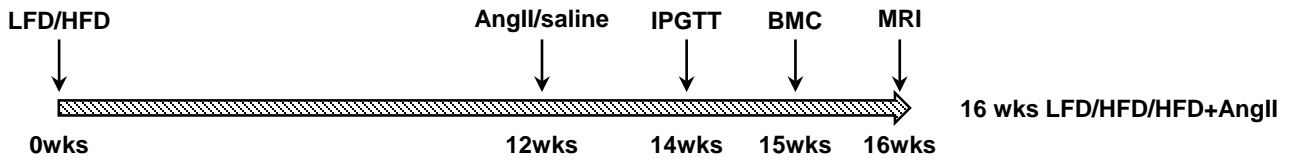


Figure S3

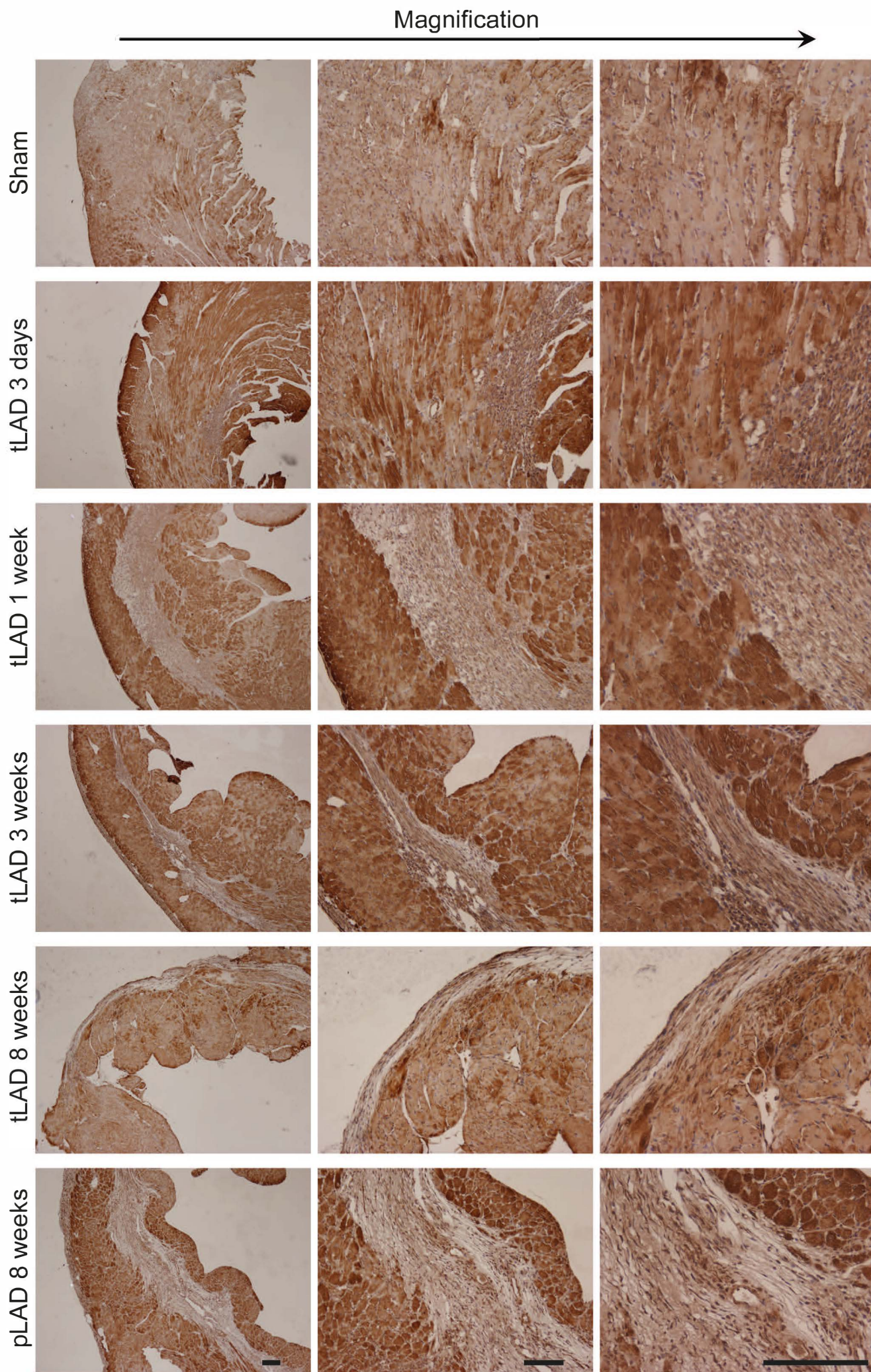


Figure S4

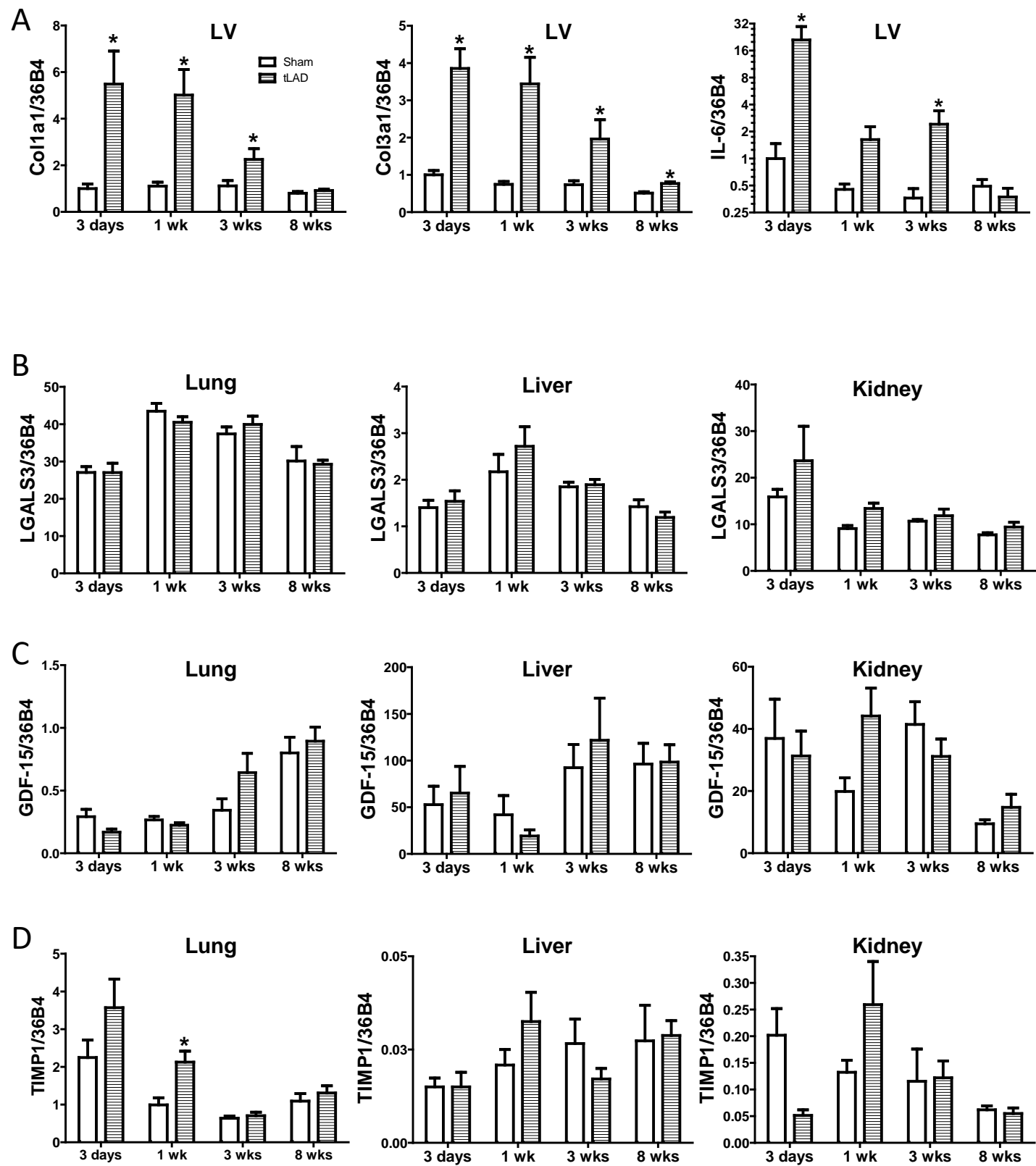


Figure S5

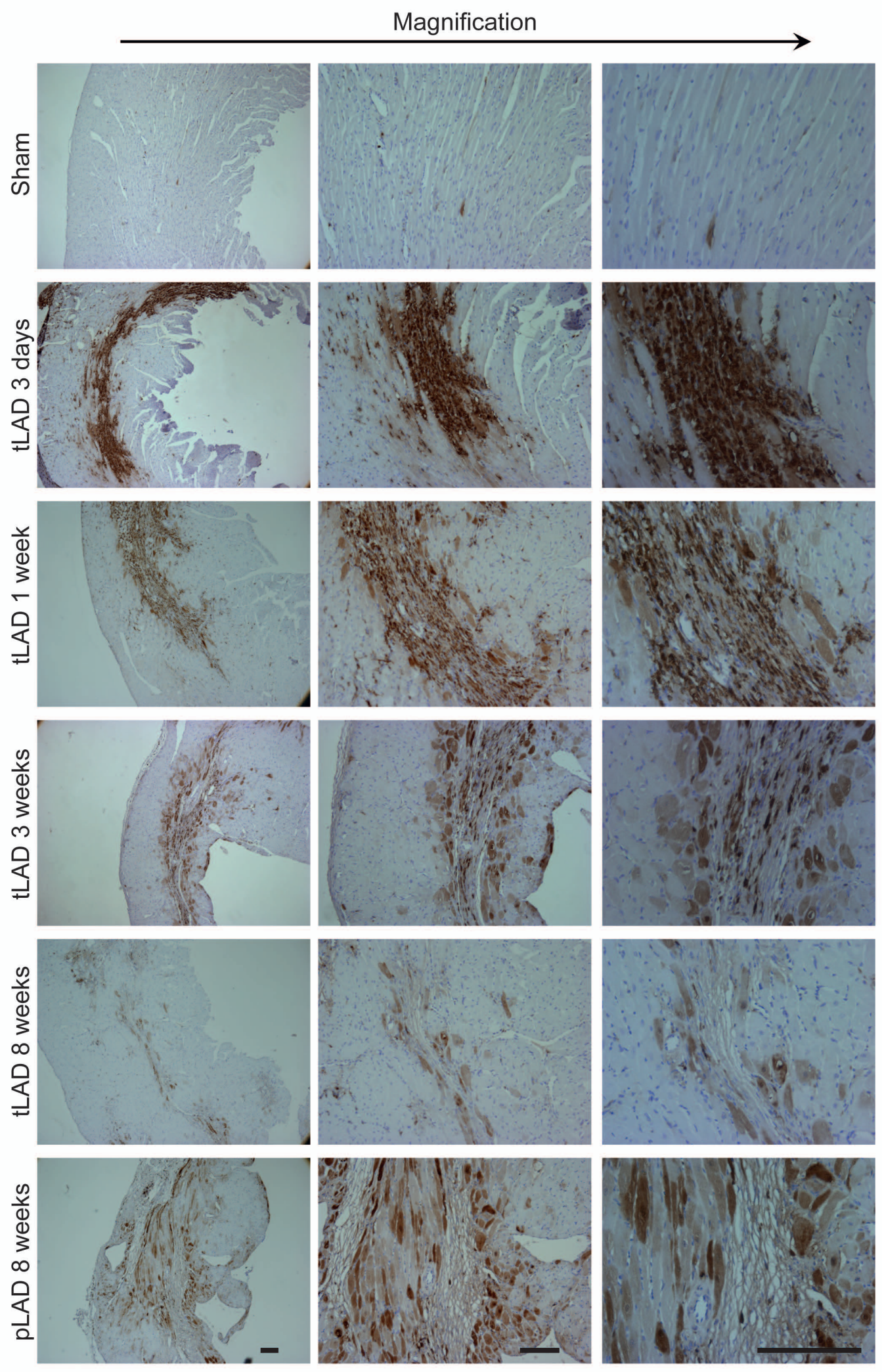


Figure S6

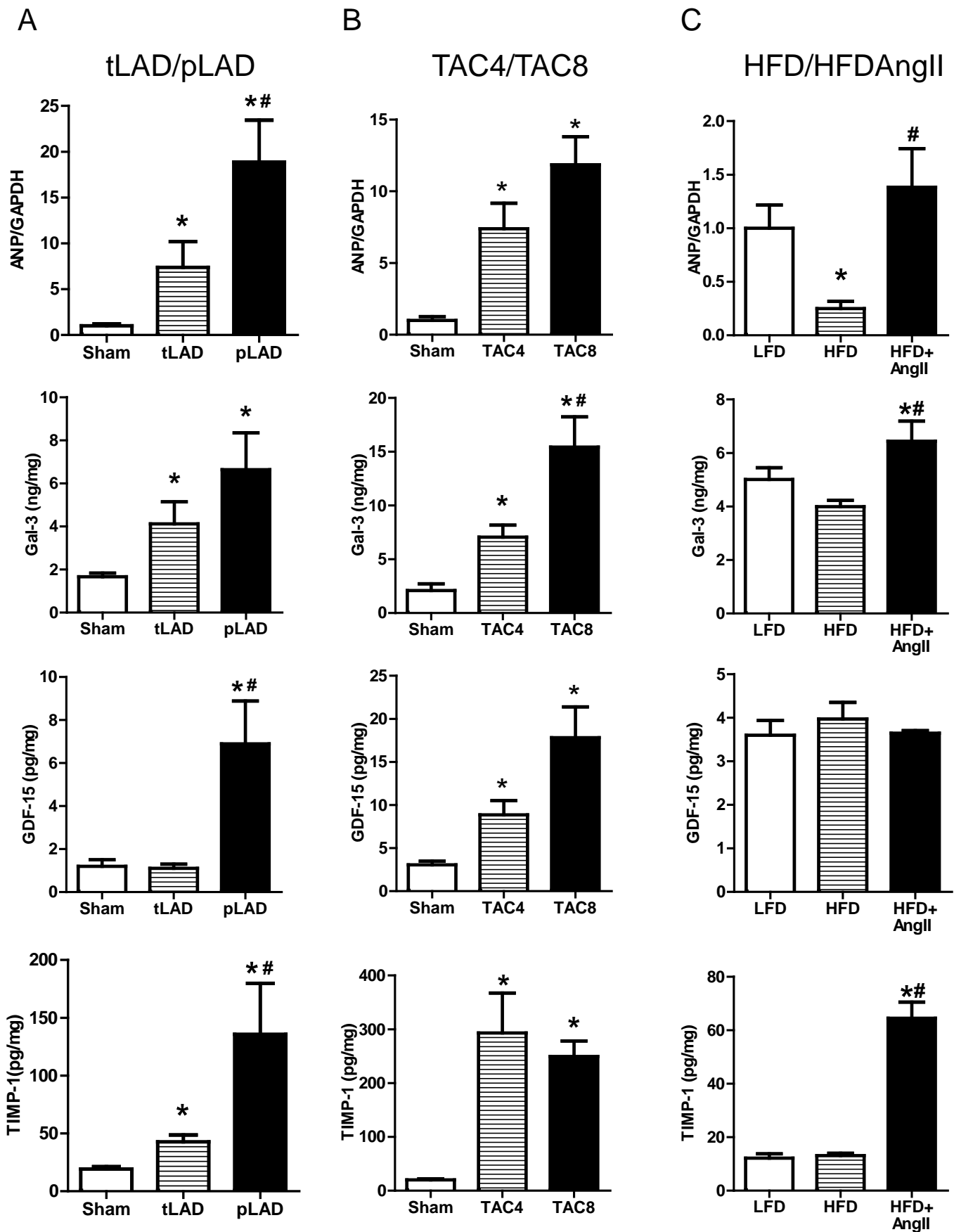


Figure S7

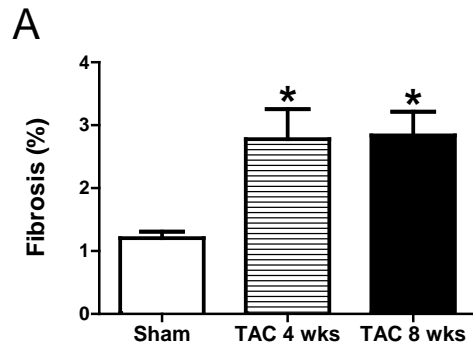


Figure S8

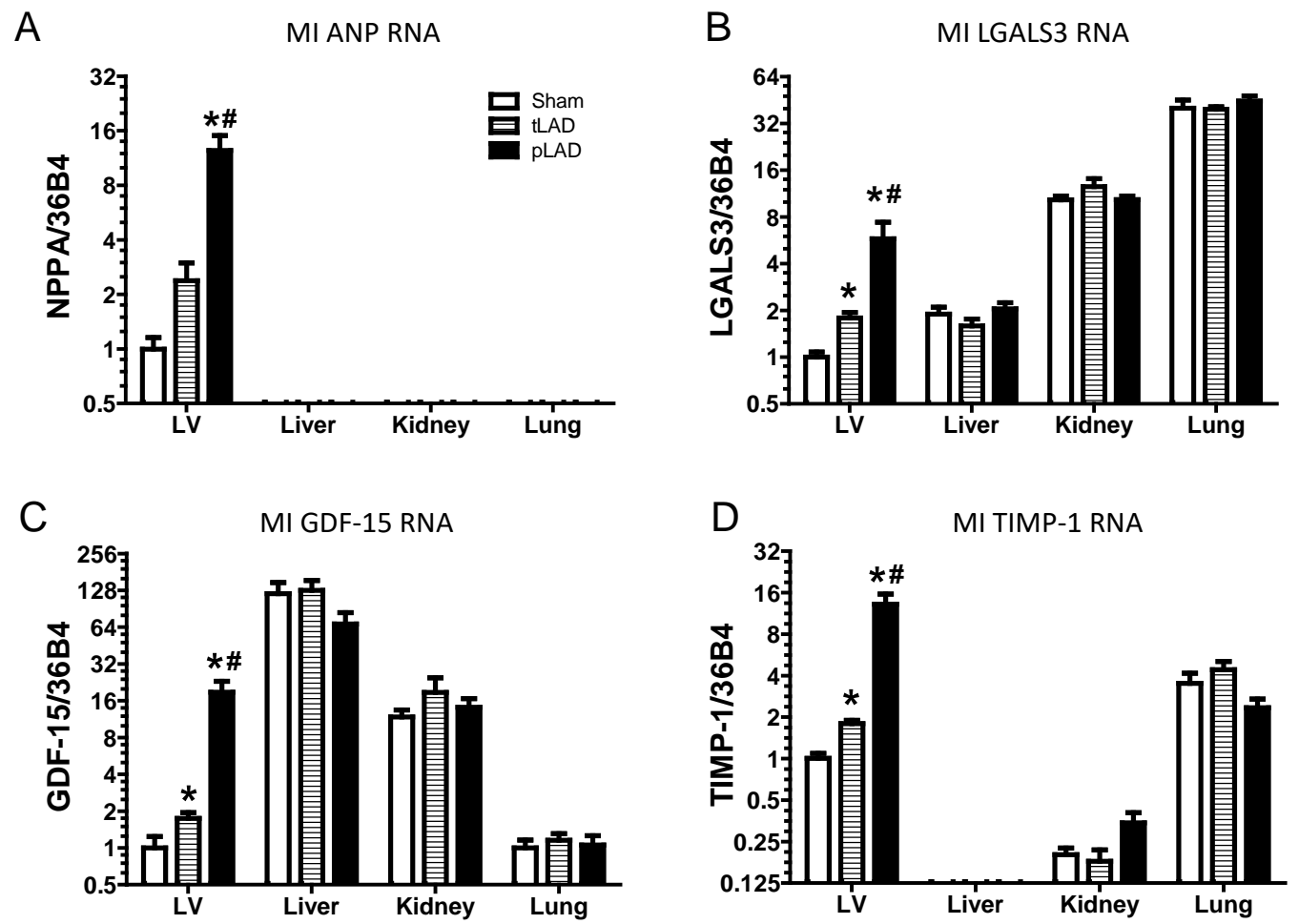


Figure S9

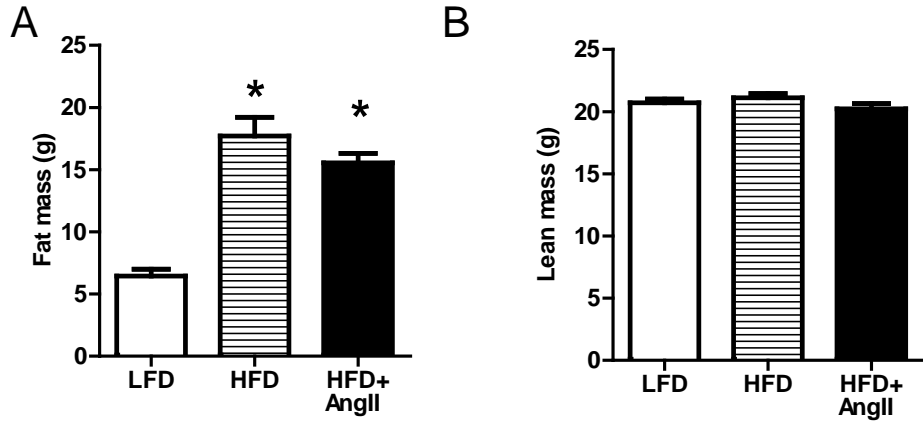
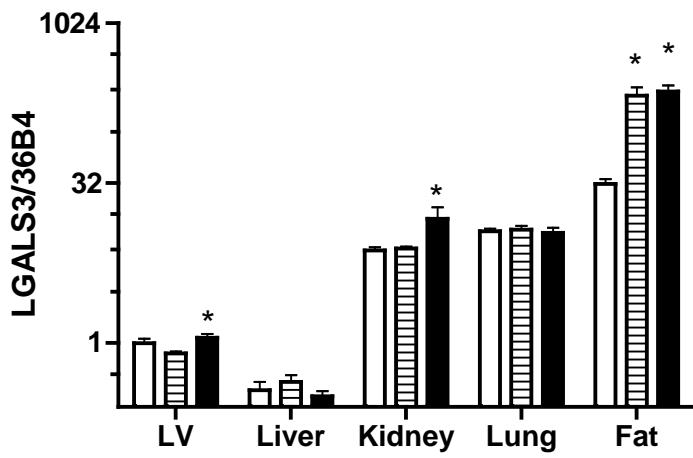
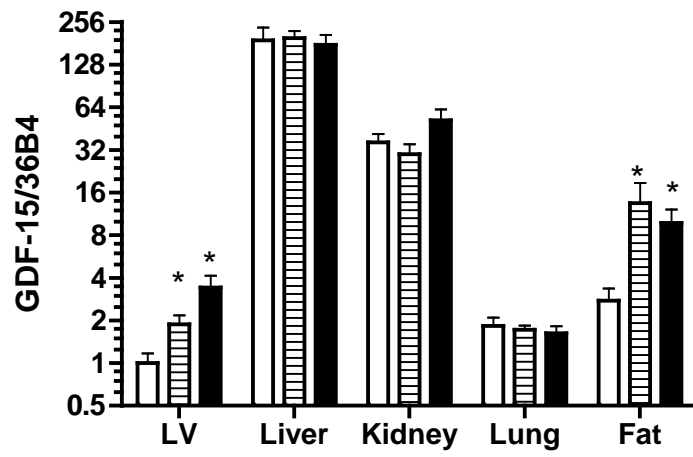


Figure S10

A



B



C

