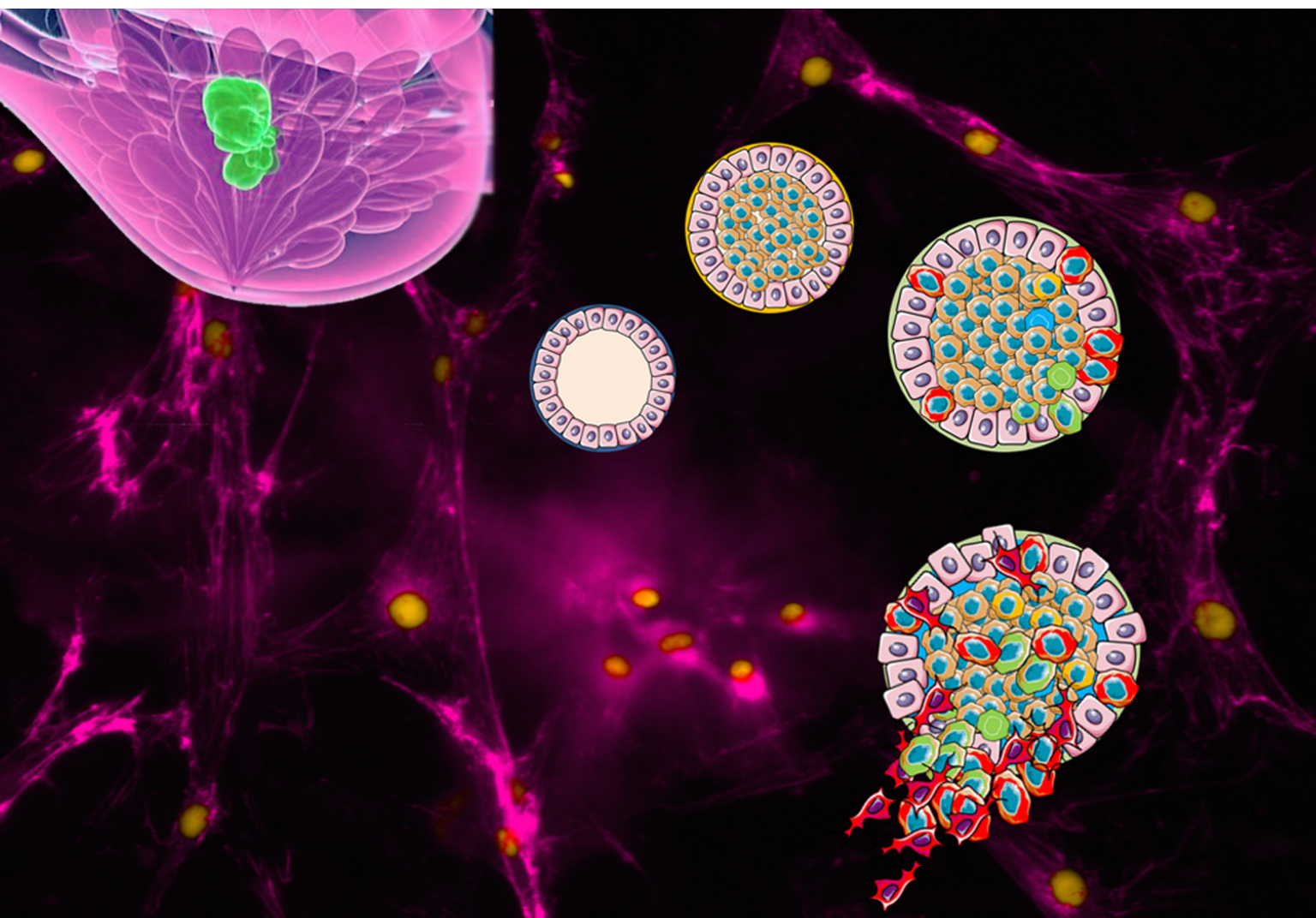


# Theranostics

The Forum for Diagnostics, Imaging, and Therapy Research



**Front Cover: Notch3 Maintains Luminal Phenotype and Suppresses Tumorigenesis and Metastasis of Breast Cancer via Trans-Activating Estrogen Receptor- $\alpha$**

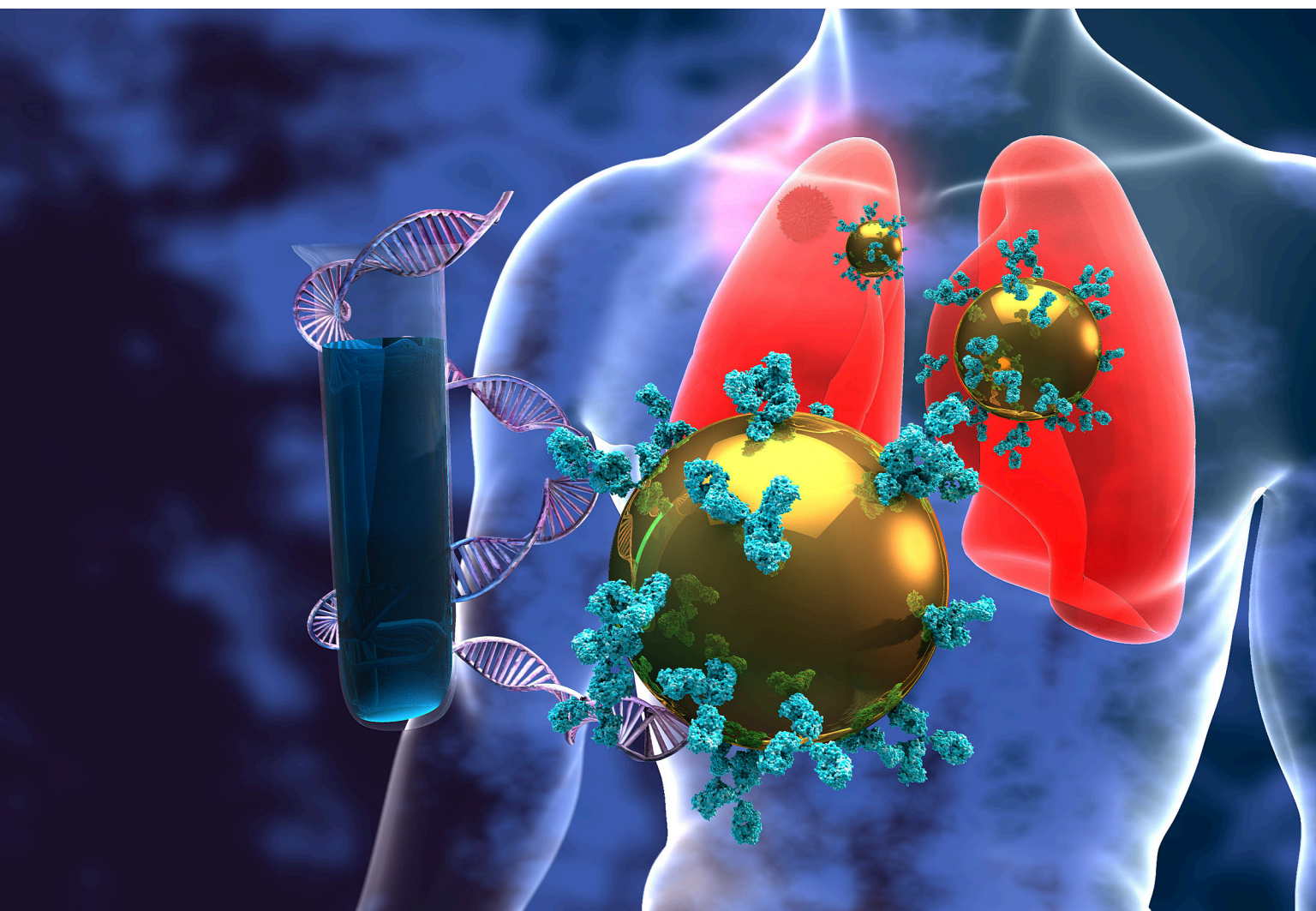
*Dou X. W. et al. pp.4041*



IVYSPRING  
INTERNATIONAL PUBLISHER

# Theranostics

The Forum for Diagnostics, Imaging, and Therapy Research



**Back Cover: Can molecular profiling enhance radiotherapy? Impact of personalized targeted gold nanoparticles on radiosensitivity and imaging of adenoid cystic carcinoma**

*Hazkani I. et al. pp.3962*



IVYSPRING  
INTERNATIONAL PUBLISHER