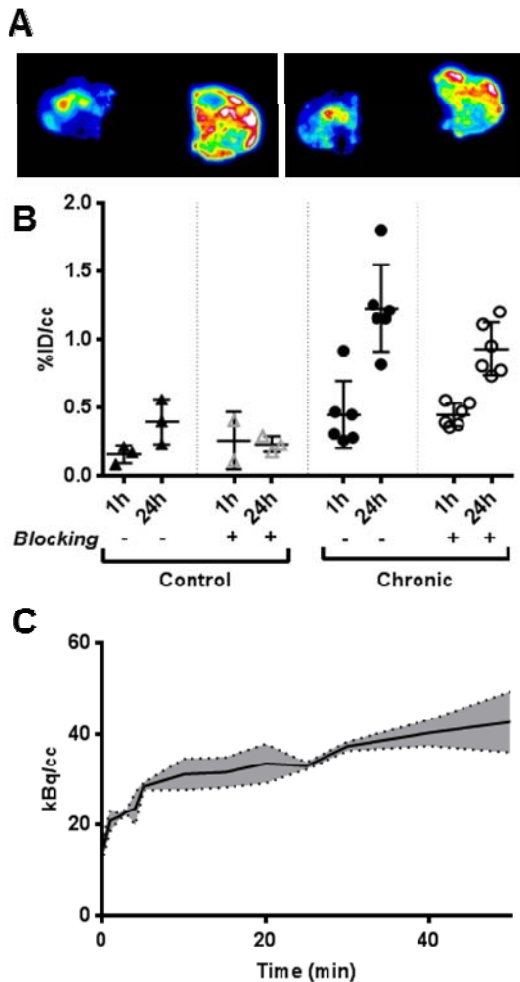
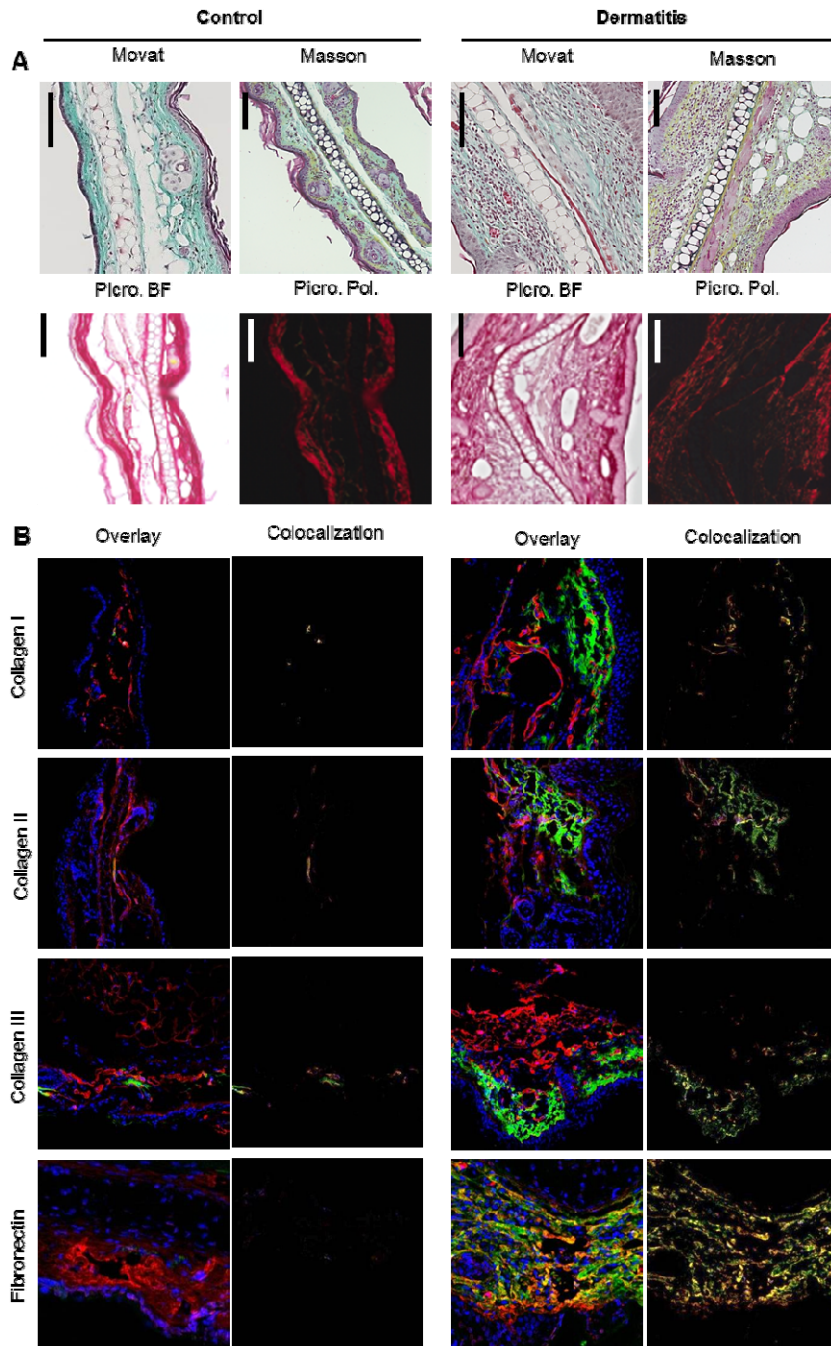


## Supplementary Materials and Figures

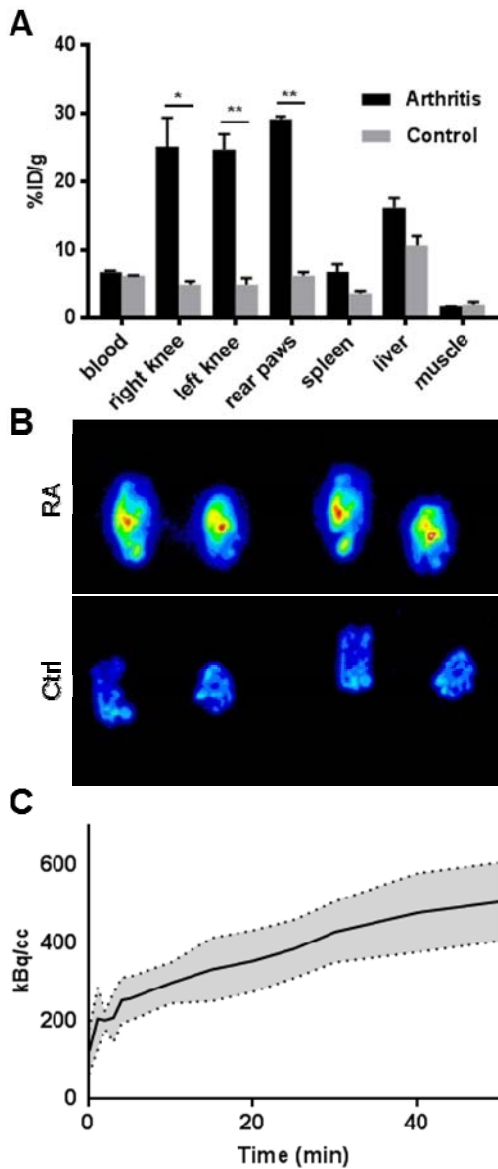


**Supplementary Figure S1:** ex vivo autoradiography and accumulation kinetics of  $^{64}\text{Cu}$ -GPVI-Fc in cutaneous delayed-type hypersensitivity reaction (DTHR) model of the mouse ear. **A** Two pairs of representative ex vivo autoradiography of  $^{64}\text{Cu}$ -GPVI-Fc accumulation in a DTHR model ears (left ear: contralateral control, right ear: TNCB induced). **B** Accumulation kinetics measured by static PET scans 1h and 24h after injection of  $^{64}\text{Cu}$ -GPVI-Fc in a chronic DTHR (n=6) and control (n=6) ear, either injected alone or alongside non radioactive Cu-GPVI-Fc. Results shown as single values with average and standard deviation. **C** Dynamic PET quantification of  $^{64}\text{Cu}$ -GPVI-Fc accumulation in the inflamed ear of an animal chronic DTHR model (n=2). % ID/cc: percentage injected dose per cubic centimeter.

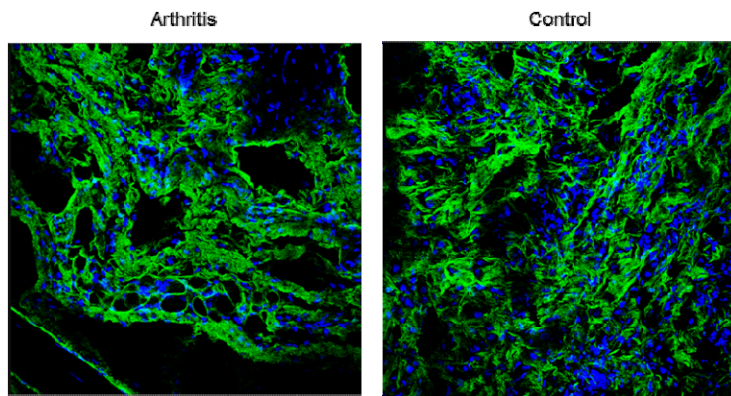


**Supplementary Figure S2:** Binding site of GPVI-Fc in a cutaneous delayed-type hypersensitivity reaction (DTHR) animal model. The two columns at the left-hand side represent a non-challenged contralateral ear; the two columns on the right-hand side a chronically inflamed ear. (A) Representative Movat, Masson, Picro Sirius (Picro.) under brightfield or polarized light (Picro. Pol.) stains. (B) Fluorescent images of section representing nuclei (blue) and GPVI-Fc (green) as well as different extra-cellular matrix proteins (green) with from top to bottom: collagen I, II, III and fibronectin overlaid (left column, Overlay) ; corresponding

colocalization highlight of GPVI-Fc and the ECM protein (right column, yellow, Colocalization).  
Scale bars: 100µm.



**Supplementary Figure S3:** Accumulation of  $^{64}\text{Cu}$ -GPVI-Fc in a rheumatoid arthritis (RA) murine model on day 6 after RA induction. **(A)** Biodistribution in RA mice (Arthritis,  $n=3$ ) and in healthy mice (Control,  $n=3$ ) of  $^{64}\text{Cu}$ -GPVI-Fc measured ex vivo by gamma-counting. Results shown as average value with standard deviation. **(B)** Ex vivo autoradiography of a rheumatoid arthritic mouse (RA) and a control animal (Ctrl.) ankles and paws 48h after injection of  $^{64}\text{Cu}$ -GPVI-Fc. **(C)** Dynamic PET imaging of the accumulation kinetics of  $^{64}\text{Cu}$ -GPVI-Fc in the ankle of the RA mouse ( $n=2$ ). % ID/g: percentage injected dose per gram.



**Supplementary Figure S4:** Post-sectioning staining of murine ankle. DAPI staining (blue) and GPVI (green) distribution in an arthritic joint (left) and in a control joint (right), stained on slice after sectioning, showing similar distribution, GPVI-Fc having similar access to connective tissue after exposure by slicing.