

Supplementary Data

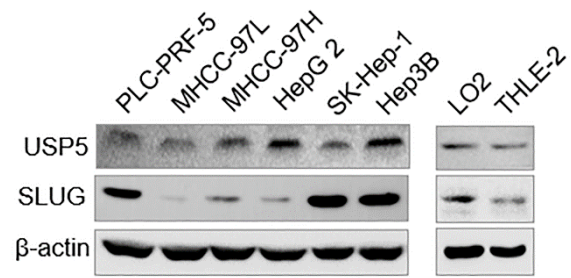


Figure. S1 Western blotting analysis of the expression of USP5 and SLUG in multiple hepatoma carcinoma lines and normal liver cells.

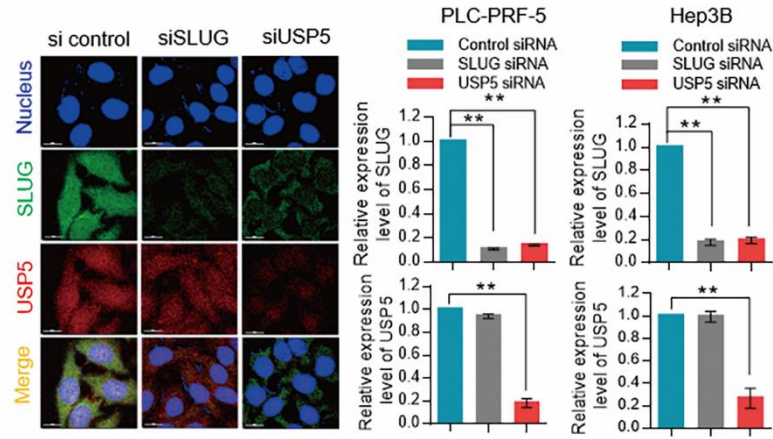


Figure. S2 Immunofluorescence assay of PLC-PRF-5 and Hep3B cells treated with SLUG siRNA or USP5 siRNA. The relative intensity of SLUG and USP5 was analyzed by the Image J software. Scale bar, 10 μ m. Each bar represents the mean \pm SD for biological triplicate experiments. ** P <0.01, Student's t -test.

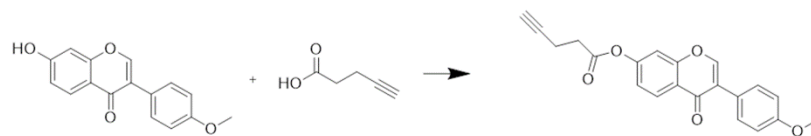


Figure. S3 Synthesis of Formononetin-Probes.