

Supplementary figures:

Mussel-inspired conductive nanofibrous membranes repair myocardial infarction by enhancing cardiac function and revascularization

**Yutong He,[#] Genlan Ye,[#] Chen Song, Chuangkun Li, Weirong Xiong, Lei Yu,
Xiaozhong Qiu^{*} and Leyu Wang^{*}**

Guangdong Provincial Key Laboratory of Construction and Detection in Tissue Engineering,
Department of Anatomy, Southern Medical University, Guangdong, Guangzhou 510515, China

These authors contributed equally to this work.

***Corresponding author:**

Prof. Leyu Wang

Email address: wangleyu889@163.com

Prof. Xiaozhong Qiu

Email address: qqiuxzh@163.com

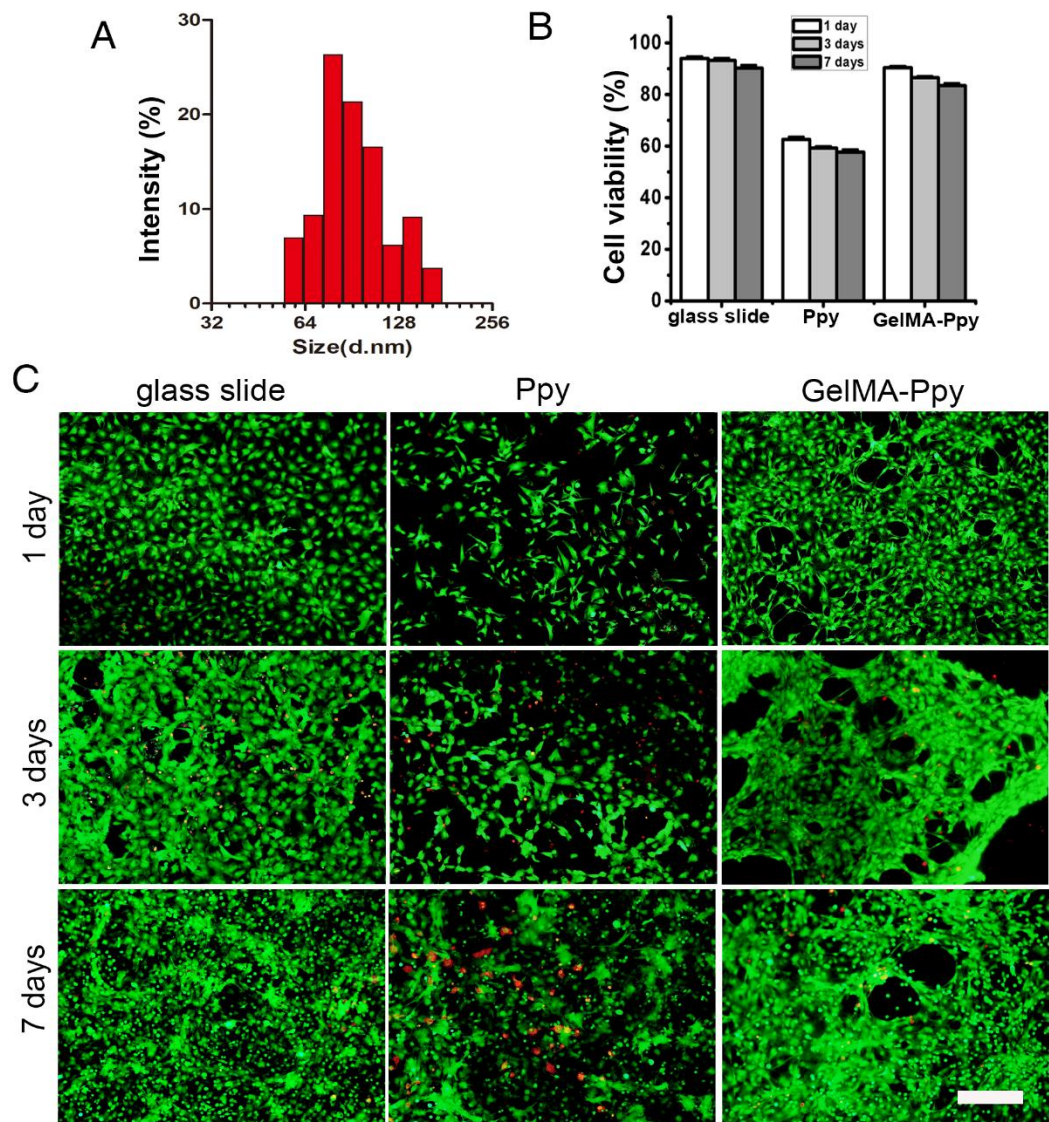


Figure S1. The biocompatibility of GelMA-Ppy nanoparticles. (A) Size distribution of GelMA-Ppy nanoparticles assessed by DLS. (B) Quantitative cell viability of untreated CMs, 25 mg/mL Ppy-treated CMs, and 50 mg/mL GelMA-Ppy nanoparticles-treated CMs for 1, 3 and 7 days. (C) Live/dead staining of untreated cardiac fibroblasts, 25 mg/mL Ppy-treated cardiac fibroblasts, and 50 mg/mL GelMA-Ppy nanoparticles-treated cardiac fibroblasts for 1, 3 and 7 days. The live cells are green and the dead cells are red. Scale bar, 100 μ m.

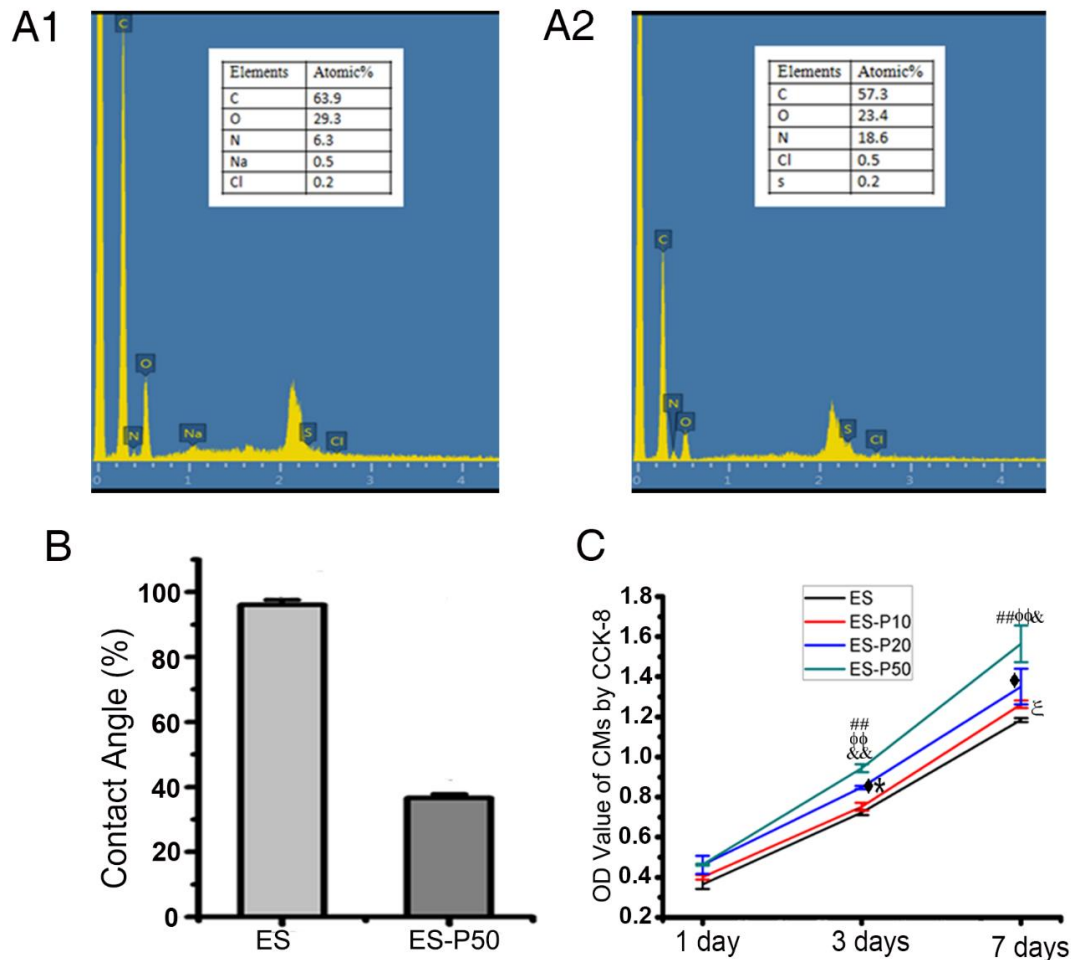


Figure S2. Characterization of dopa-based conductive membranes. (A) The energy dispersive analysis of ES (A1) and ES-P50 (A2). (B) Contact angle measurements of ES and ES-P50. Data are presented as means \pm SD. n=10. (C) The viability of CMs cultured on various membranes was investigated on 1, 3 and 7 days with CCK-8 assay. ES: pristine ES-GelMA/PCL membrane; ES-P10: dopa-based ES-P10 membrane; ES-P20: dopa-based ES-P20 membrane; ES-P50: dopa-based ES-P50 membrane. All data are presented as mean \pm SD. ##, $p < 0.01$ between ES and ES-P50; $\phi\phi$, $p < 0.01$ between ES-P10 and ES-P50; &, $p < 0.05$ between ES-P20 and ES-P50; &&, $p < 0.01$ between ES-P20 and ES-P50; \diamond , $p < 0.05$ between ES and ES-P20; *, $p < 0.05$ between ES-P10 and ES-P20; ξ ,

$p < 0.05$ between ES and ES-P10.

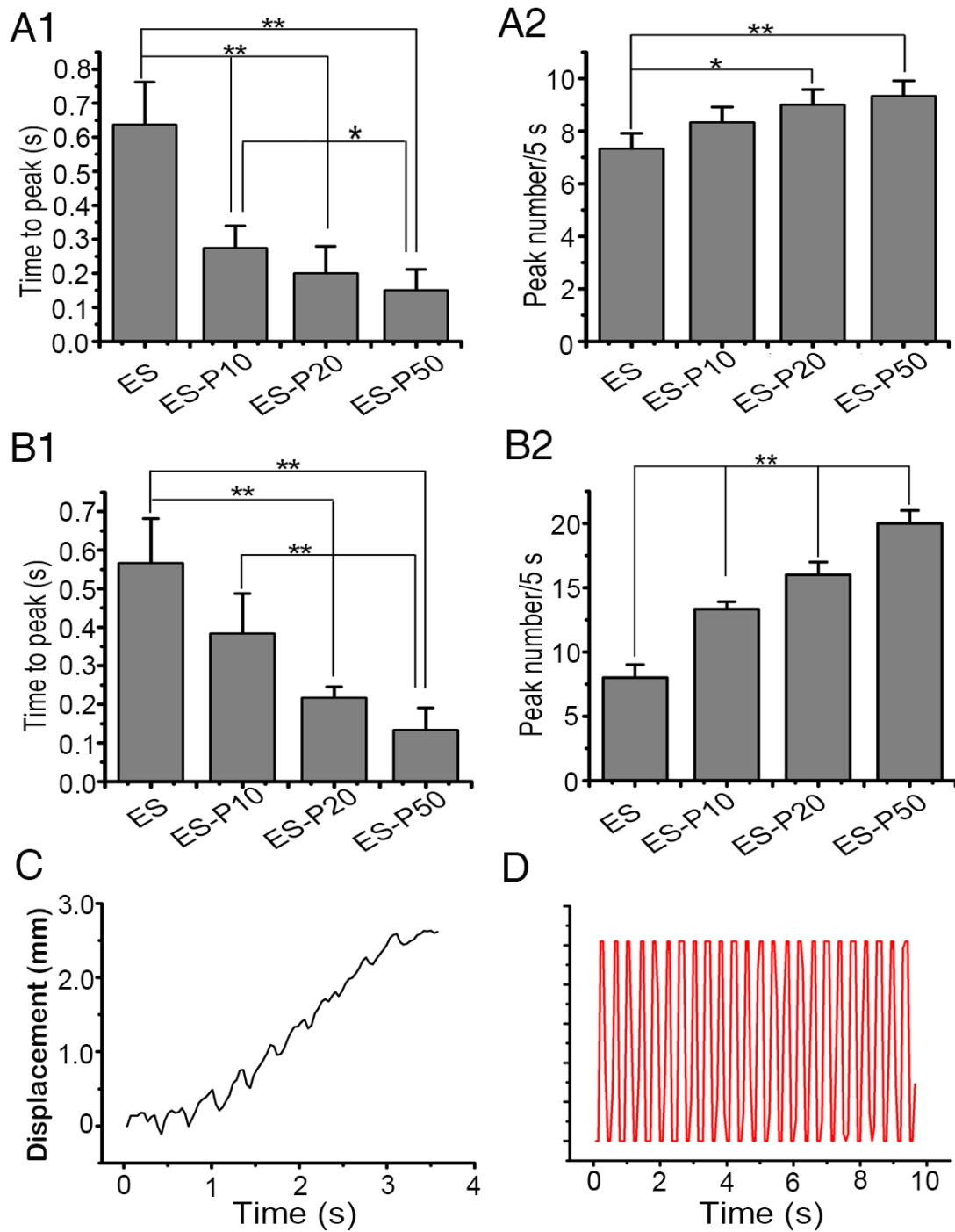


Figure S3. Calcium transient parameters of CMs cultured on different membranes. (A-B) The calcium transient parameters at day 3 (A) and day 7 (B) calculated by ImageJ software according to the data from Figure 4A-B, including the

times to calcium peak and peak numbers within 5 s. ES: pristine ES-GelMA/PCL membrane; ES-P10: dopa-based ES-P10 membrane; ES-P20: dopa-based ES-P20 membrane; ES-P50: dopa-based ES-P50 membrane. All data are presented as mean \pm SD. *, $p < 0.05$; **, $p < 0.01$. **(C)** The displacement vs. time plot for the spontaneous linear travelling of the dopa-based ES-P50 ECP based on figure 4C1-2 and supplemental movie 2. **(D)** The beating signal analysis of the dopa-based ES-P50 ECP in Figure 4C3-4 and supplemental movie 2 with METLAB.