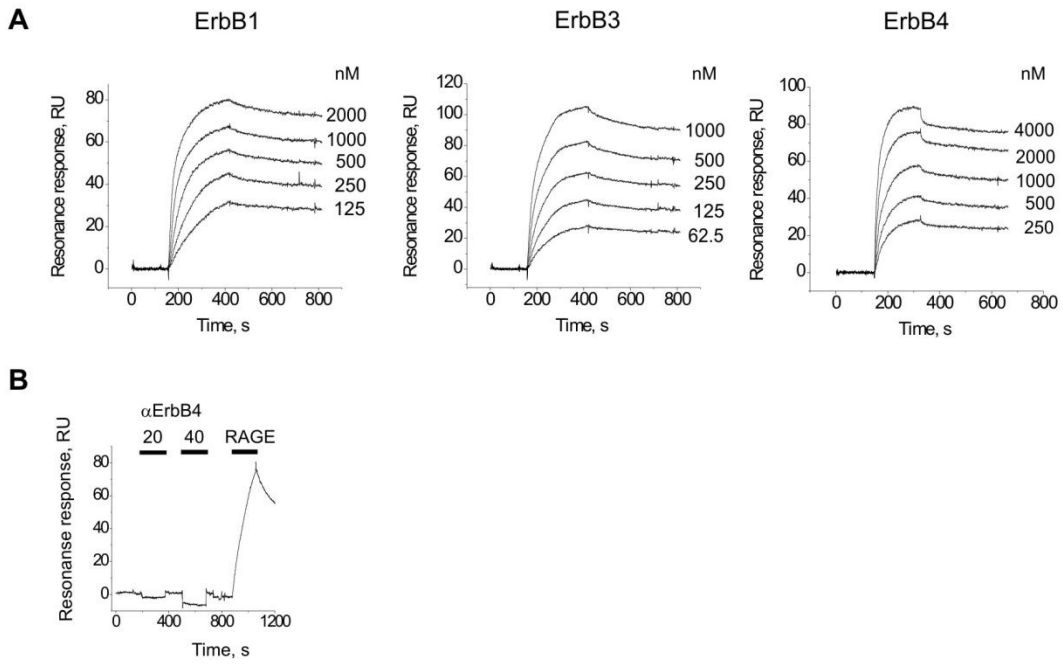


SUPPLEMENTARY FIGURE LEGENDS

Suppl. Fig. 1. (A) SPR binding of S100A4 to immobilized ErbB1, 3 and 4. (B) SPR binding of ErbB4 inhibitory antibodies, 20 and 40 $\mu\text{g/ml}$ (Ab 20 and 40) to the immobilized S100A4, representative of three independent experiments. RAGE (500 nM), a known binding partner of S100A4, was used as a positive control.

Suppl. Fig. 2. Sequences of primers (A) and S100A4-derived peptides (B) used in the study.

Suppl Fig. 1



Suppl Fig. 2

A

S100A4-derived peptides
H3: KELLTRELPSFLGKRT
H6: NEFFEGFPDKQPRKK

B

Sequences of primers used in the study

Gene	Forward Primer Sequence [5'3']	Forward Primer Sequence [5'-3']	Amplicon length (bp)
S100A4	GGCAAGACCCTTGGAGGAGGC	GCTGTCCAAGTTGCTCAT	193
ErbB3	TAGGTGCCAAAGGTCCAATC	TTGCTCATCAACACCTCTGC	136
ErbB4	GAACAATGTGATGGCAGGTG	TGAAGTTCATGCAGGCAAAG	115
GAPDH	AAGGTCATCCCAGAGCTGAACG	CCTGCTTCACCACCTTCTTGAT	139