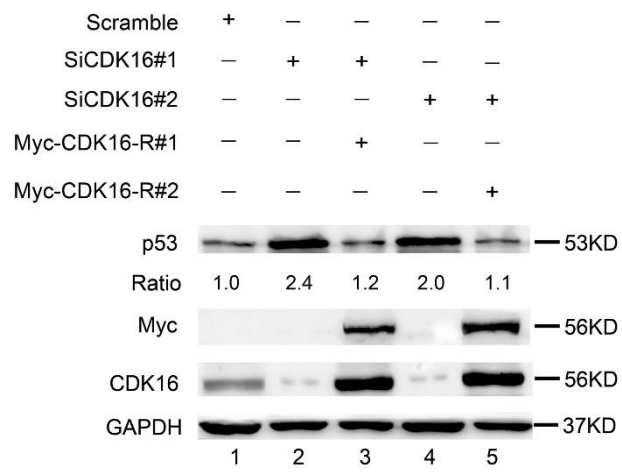


**Figure S1.** CDK16 knockdown cells were reconstituted with siRNA-resistant CDK16 plasmid (Myc-CDK16-R#1 and Myc-CDK16-R#2) as indicated. The ratio shows relative p53 protein expression normalized for GAPDH (scramble, set at 1)

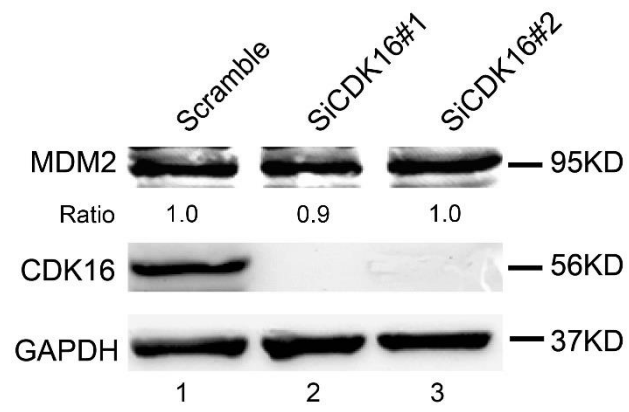
**Figure S2.** CDK16 knockdown did not affect the protein level of MDM2. A549 cells were transfected with the indicated siRNAs. 48h later, cells were harvested and analyzed by immunoblotting. The ratio shows relative MDM2 protein expression normalized for GAPDH (scramble, set at 1)

**Figure S3.** A549 and H292 cells were either untreated or irradiated (8 Gy). After 24 h, cells were collected analyzed by immunoblotting. The ratio shows relative CDK16 protein expression normalized for GAPDH (control, set at 1)

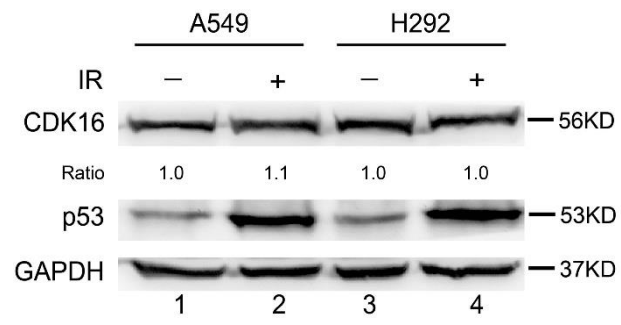
**Figure S1.**



**Figure S2.**



**Figure S3.**



**Table S1.** Sequences of primers used for Real-time quantitative PCR

Genes	Sequences (5'--3')	Size (bp)
P53	F <sup>a</sup> : GCTTTCACGACGGTGAC R: GCTCGACGCTAGGATCTGAC	97
P21	F: TACCCTTGTGCCTCGCTCAG R: GAGAAGATCAGCCGGCGTTT	129
NOXA	F: CGGGCTCTGTAGCTGAGTG R: TTCTGCCGGAAGTTCAGTTT	160
PUMA	F: ACGACCTCAACGCACAGTACG R: GTAAGGGCAGGAGTCCCATGATG	108
MDM2	F: GAATCTACAGGGACGCCATC R: TCCTGATCCAACCAATCACC	77
CDK16	F: TATCCACACGGAGAAGTCCC R: ACAGGAACAGTTTCACGTTG	116
GAPDH	F: GAGTCAACGGATTTGGTCGT R: GACAAGCTTCCCGTTCTCAG	185

<sup>a</sup> F, forward primer; R, reverse primer.

**Table S2. Correlation between the clinicopathologic variables and expression of CDK16 in human lung cancer tissues**

Features	CDK16 expression		P-value
	low	high	
<b>Sex</b>			
Male	13	35	0.473
Female	12	28	
<b>Age(years)</b>			
≤60	15	25	0.068
> 60	10	38	
<b>Tumor size</b>			
T1 (≤3cm)	6	26	0.137
T2 (> 3cm, ≤7cm)	16	35	
T3 (> 7cm)	3	2	
<b>Stage</b>			
I - II	15	32	0.294
III-IV	10	31	
<b>T</b>			
1	3	14	0.626
2	14	35	
3	6	10	
4	2	4	
<b>N</b>			
0	18	28	<b>0.026</b>
1	5	14	
2	2	15	
3	0	6	
<b>M</b>			
0	25	62	0.716
1	0	1	