

## Supplementary Material

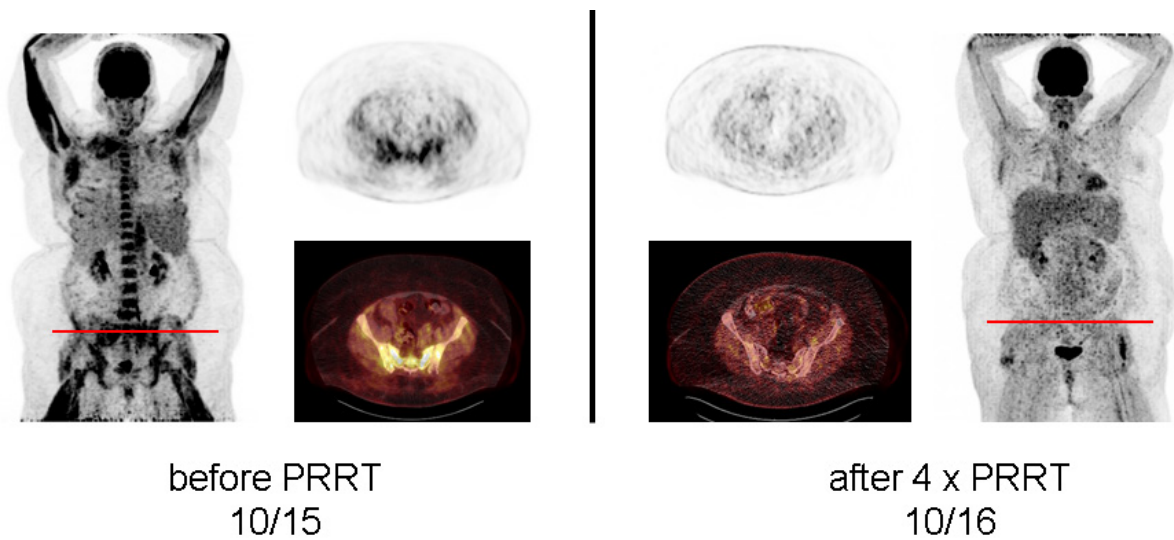
### Supplementary Figures

Supplementary Figure 1: Display of [18F]-FDG-PET/CT before and 1 year after initiation of peptide receptor radionuclide therapy with [177Lu] in patient #1

Supplementary Figure 2: Soluble interleukin-2 receptor levels prior to and in the course of peptide receptor radionuclide therapy

### SUPPLEMENTARY FIGURES

*Supplementary Figure 1:* Display of [18F]-FDG-PET/CT before and 1 year after initiation of peptide receptor radionuclide therapy with [177Lu] in patient #1. A total of four cycles have been administered



The initial diffuse involvement of the bone marrow has almost completely resolved.

Supplementary Figure 2:

Soluble interleukin-2 receptor (in IU/ml) levels prior to and in the course of peptide receptor radionuclide therapy (PRRT)

