

Supplementary Material

Intracellularly Swollen Polypeptide Nanogel Assists Hepatoma Chemotherapy

Bo Shi^{1,#}, Kexin Huang^{1,#}, Jianxun Ding^{2,#}, Weiguo Xu^{2,✉}, Yu Yang¹, Haiyan Liu^{1,✉}, Lesan Yan^{3,✉}, Xuesi Chen²

1. Center for Biological Experiment, College of Basic Medicine, Jilin University, Changchun 130021, People's Republic of China

2. Key Laboratory of Polymer Ecomaterials, Changchun Institute of Applied Chemistry, Chinese Academy of Sciences, Changchun 130022, People's Republic of China

3. Department of Bioengineering, University of Pennsylvania, Philadelphia, PA 19104-6321, United States of America

#These authors contributed equally to this work.

✉ Corresponding authors: Weiguo Xu, E-mail: wgxu@ciac.ac.cn; Haiyan Liu, E-mail: haiyan@jlu.edu.cn; Lesan Yan, E-mail: lesanyan@gmail.com

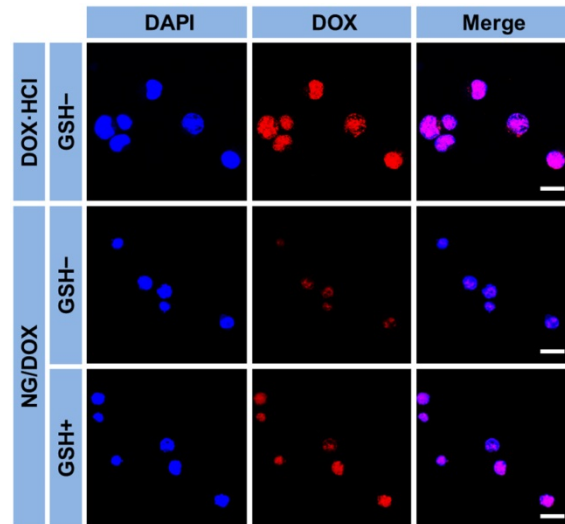


Figure S1. Typical CLSM determinations of intracellular DOX release from NG/DOX toward H22 cells without or with 2 h of GSH pretreatment (*i.e.*, GSH- or GSH+, respectively). Free DOX·HCl was used as a control. Scale bar = 20 μ m.

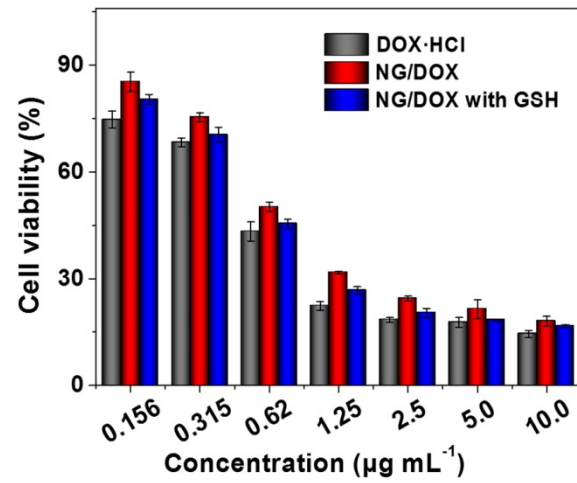


Figure S2. *In vitro* cytotoxicities of NG/DOX against H22 cells without or with 2 h of GSH pretreatment, after incubation for 48 h. Free DOX·HCl was used as a control. Each set of data was represented as mean \pm SD ($n = 3$).