

Supporting information

Optimizing Early Response Monitoring and Prediction of Cancer Antiangiogenesis Therapy by Noninvasive PET Molecular Imaging Strategies of Multifactorial Bioparameters

Xiao Bao, Ming-Wei Wang^{*}, Jian-Min Luo, Si-Yang Wang, Yong-Ping Zhang,
Ying-Jian Zhang

Department of Nuclear Medicine, Fudan University Shanghai Cancer Center;
Department of Oncology, Shanghai Medical College, Fudan University; Center for
Biomedical Imaging, Fudan University; Shanghai Engineering Research Center for
Molecular Imaging Probes, Shanghai 200032, China

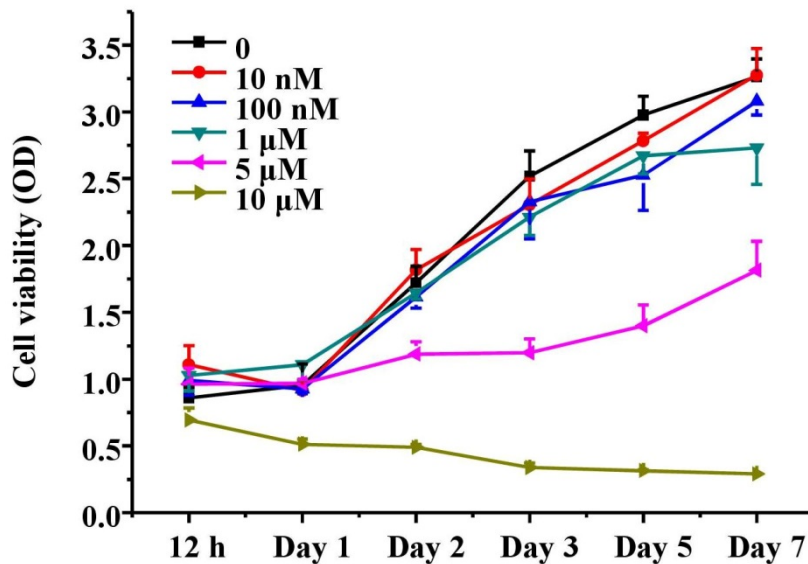


Figure S1: Antitumor effects of sunitinib on U87MG cells

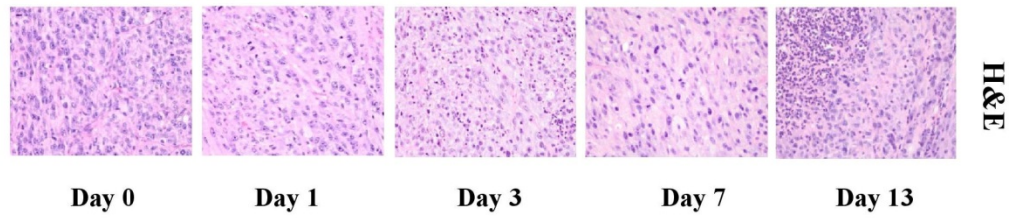


Figure S2: H&E staining of tumor sections on days 0, 1, 3, 7 and 13 post treatment

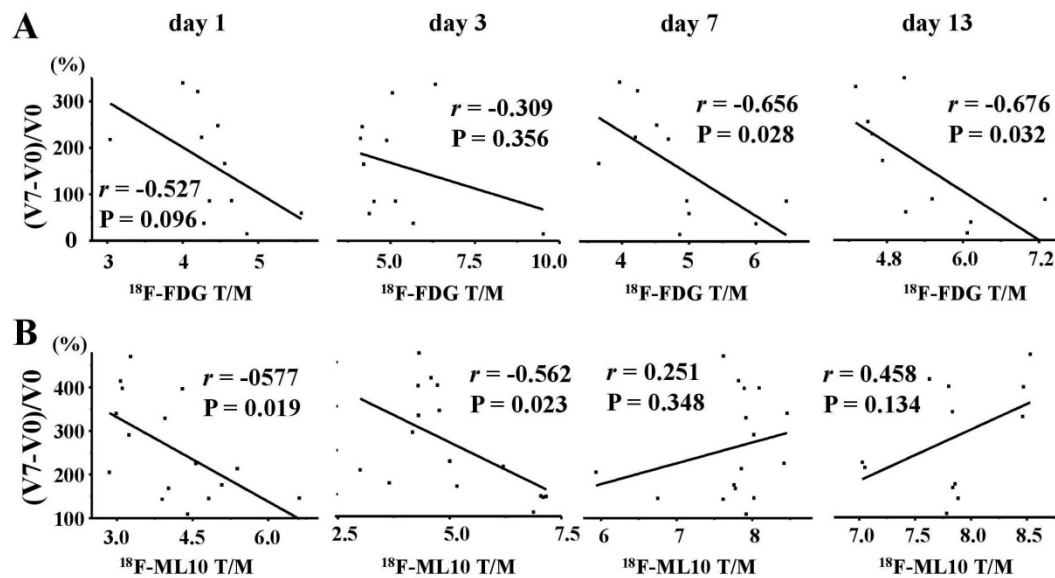


Figure S3: Correlations between tumor growth ratios (TGR) and T/M of $^{18}\text{F-FDG}$ (A) and $^{18}\text{F-ML-10}$ (B) on days 1, 3, 7 and 14 (from Left to Right). It was showed that the T/M of both $^{18}\text{F-FDG}$ and $^{18}\text{F-ML-10}$ at the time points post treatment were not correlated with the therapeutic effect $((V_7 - V_0)/V_0)$.