

Figure S1

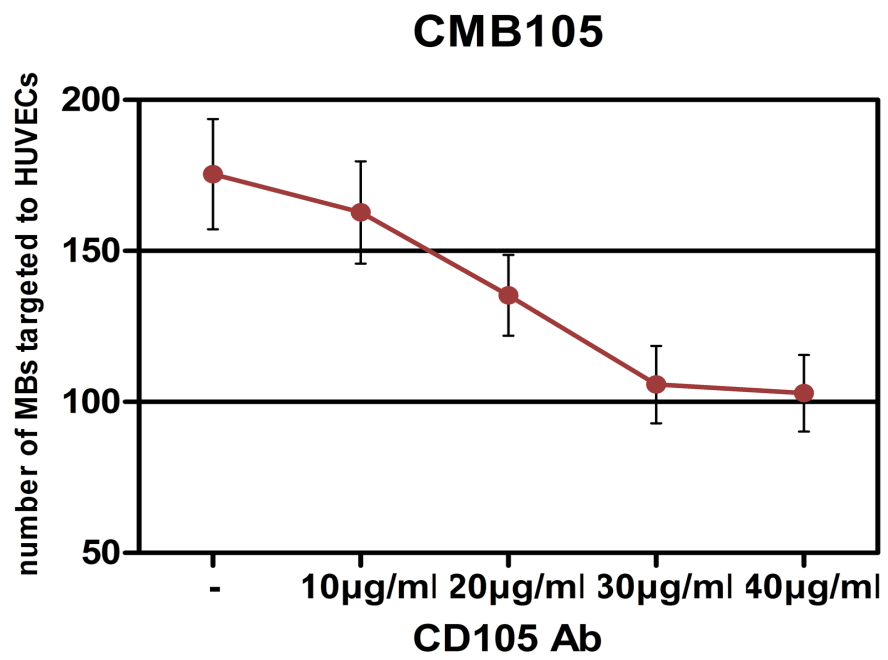


Figure S1 Binding of CMB105 with pre-incubation of HUVECs with different concentration of anti-CD105 antibody

Figure S2

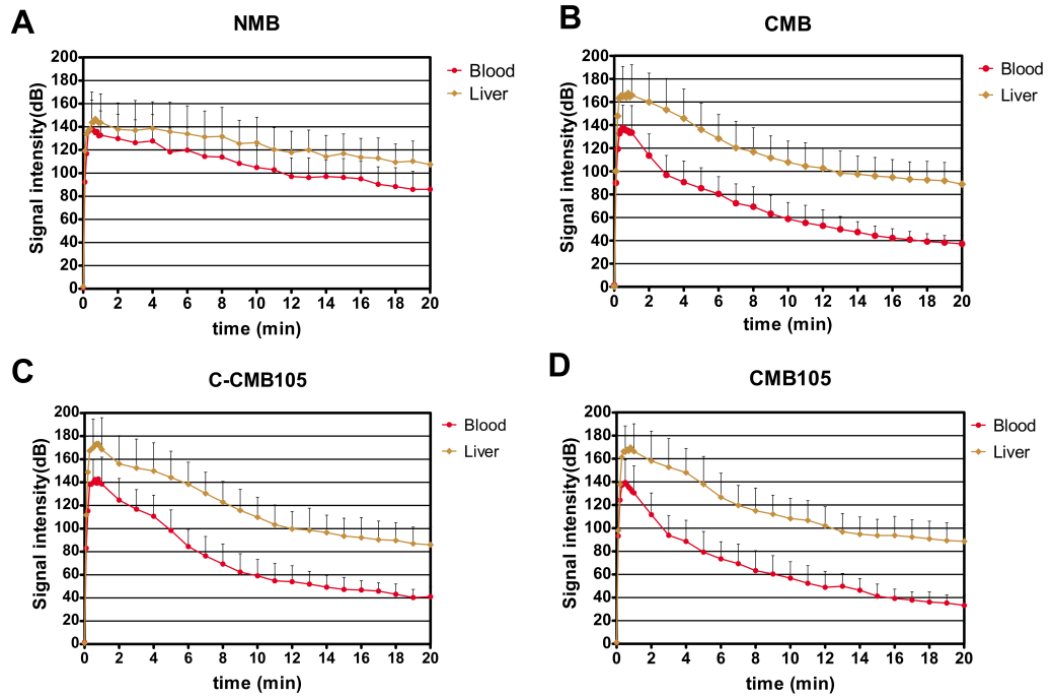


Figure S2 Circulation characteristics of NMB, CMB, C-CMB105 and CMB105. An early, rapid and intense accumulation of microbubbles was observed in both the blood and liver for all of the 4 types of microbubbles, followed by a rapid decrease of the signal intensity for CMB, C-CMB105 and CMB105 and a slowly decrease for NMB. n=6 per group.

Figure S3

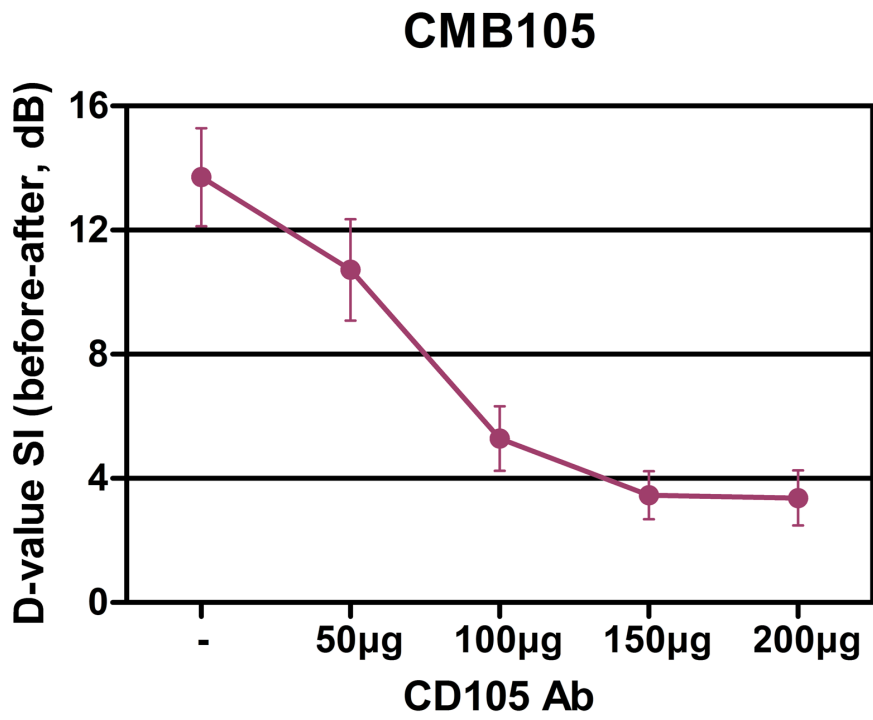


Figure S3 Competition tests of CMB105 targeted binding to endothelia cells in vivo with pre-injection of different concentration of CD105 antibody